



# ZERO-G (FLUSH MOUNT)

v 1.4 | February 2024

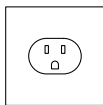
## Flush mounted cable suspended motorized screen

### Features

- Levitating motorized screen
- Can be deployed in places where a rigid TV cannot
- All screens come with Wall Switch, IR Remote, and Low Voltage Trigger.
- Min. Drop is 12" and Max Drop is 7.9' (95"), depending on screen size.
- Removable upper motor lift tube with single pin release
- PCB is slide removable from the case
- Flush doors are pre-programmed from the factory
- Screen surface is tab-tensioned
- Material roll pre-installed from the factory
- Automatic upper limit by optical sensor

### Compatible power sources

Configurable in 2 available motor types:



110v AC\*

\*220v AC available for international

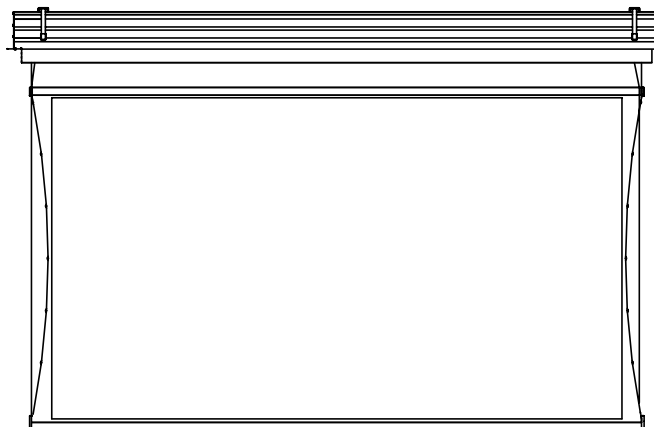
### Aspect Ratios

16:9 | 16:10 | 2.35:1

### Environment

Operating temperature range is normal ambient (32 to 110 degrees), and humidity levels up to 90%. Not meant for wet environments

Passed third party fire performance evaluation in accordance with underwriters laboratories (UL) 2043-13, fire test for heat and visible smoke release for discrete products and their accessories installed in air-handling spaces



Zero G (Flush mount) specifications

*For illustration purposes only*

### Cord Colors

White | Beige | Black | Forest Green | Gray | Sky Blue

### Sizes

Min: 80" (2032mm) | Max: 160" (4064 mm)

Available in 1" increments. All sizes are measured diagonally. Some materials may be limited in size. All dimensions are listed as seamless.

### Methods of Control

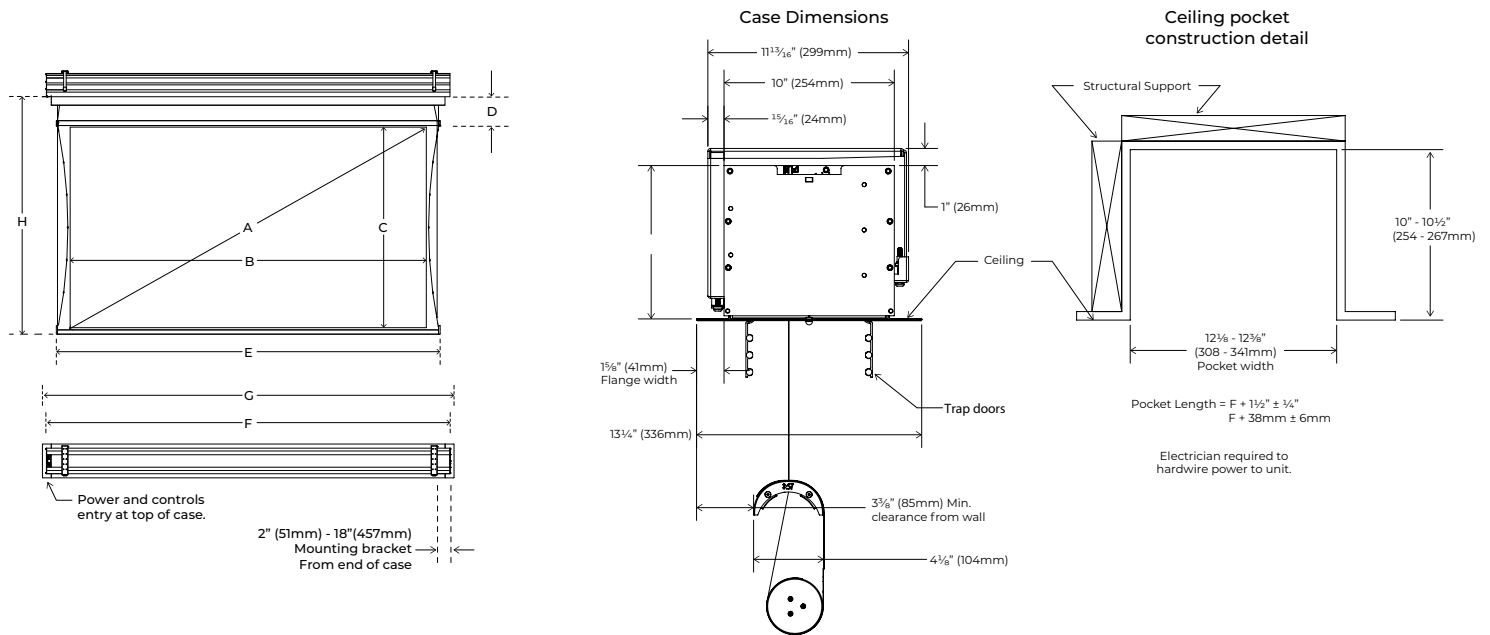
Wired Integration and control

- Contact closure\*
- 12v trigger
- IR

### Material Options

- Slate 1.2
- Pure Gray .85
- Pure White 1.3
- 360 Rear - Pro
- Unity 1.0

## Screen Sizes and Measurements



**Note: Refer to the next page for exact screen measurements as per each viewing format.**

Screen materials may expand and contract slightly over time. SI allows a 1.5% tolerance within the viewing surface.



# ZERO-G (FLUSH MOUNT)

v 1.4 | February 2024

## Screen Sizes and Measurements

### Theater HDTV (16:9) Format Dimensions

Viewing Area H x W (C X B)				Standard Diagonal (A)		Overall Case Length (F)		Overall Flange Length (G)		Approx. Ship. Wt.	
In.		mm		In.	mm	In.	mm	In.	mm	Lbs.	Kg
39.25" X 69.75"		997	X 1,772	80"	2,032	82.75"	2,102	85.405"	2,169	144	65
45.125" X 80.188"		1,146	X 2,037	92"	2,337	93.875"	2,384	96.53"	2,452	159	72
49" X 87.188"		1,245	X 2,215	100"	2,540	101.313"	2,573	103.968"	2,641	169	77
51.938" X 92.375"		1,319	X 2,346	106"	2,692	106.938"	2,716	109.593"	2,784	176	80
53.938" X 95.875"		1,370	X 2,435	110"	2,794	110.688"	2,811	113.343"	2,879	181	82
58.813" X 104.563"		1,494	X 2,656	120"	3,048	120.125"	3,051	122.78"	3,119	194	88
65.188" X 115.938"		1,656	X 2,945	133"	3,378	132.5"	3,366	135.155"	3,433	211	96
78.438" X 139.438"		1,992	X 3,542	160"	4,064	158.5"	4,026	161.155"	4,093	246	112

### Wide (16:10) Format Dimensions

Viewing Area H x W (C X B)				Standard Diagonal (A)		Overall Case Length (F)		Overall Flange Length (G)		Approx. Ship. Wt.	
In.		mm		In.	mm	In.	mm	In.	mm	Lbs.	Kg
42.375" X 67.813"		1,076	X 1,722	80"	2,032	81.188"	2,062	83.843"	2,130	142	64
48.75" X 78"		1,238	X 1,981	92"	2,337	92.125"	2,340	94.78"	2,407	156	71
53" X 84.813"		1,346	X 2,154	100"	2,540	99.438"	2,526	102.093"	2,593	166	75
56.188" X 89.875"		1,427	X 2,283	106"	2,692	105"	2,667	107.655"	2,734	174	79
58.313" X 93.25"		1,481	X 2,369	110"	2,794	108.688"	2,761	111.343"	2,828	179	81
63.625" X 101.75"		1,616	X 2,584	120"	3,048	118"	2,997	120.655"	3,065	192	87
70.5" X 112.813"		1,791	X 2,865	133"	3,378	130.25"	3,308	132.905"	3,376	208	94
78.438" X 125.5"		1,992	X 3,188	148"	3,759	144.5"	3,670	147.155"	3,738	228	103

### CinemaScope (2.35:1) Format Dimensions

Viewing Area H x W (C X B)				Standard Diagonal (A)		Overall Case Length (F)		Overall Flange Length (G)		Approx. Ship. Wt.	
In.		mm		In.	mm	In.	mm	In.	mm	Lbs.	Kg
31.313" X 73.625"		795	X 1,870	80"	2,032	85.938"	2,183	88.593"	2,250	148	67
36" X 84.625"		914	X 2,149	92"	2,337	97.438"	2,475	100.093"	2,542	163	74
39.125" X 92"		994	X 2,337	100"	2,540	105.063"	2,669	107.718"	2,736	173	78
41.5" X 97.563"		1,054	X 2,478	106"	2,692	110.875"	2,816	113.53"	2,884	181	82
43.063" X 101.188"		1,094	X 2,570	110"	2,794	114.688"	2,913	117.343"	2,980	186	84
47" X 110.438"		1,194	X 2,805	120"	3,048	124.375"	3,159	127.03"	3,227	199	90
52.063" X 122.375"		1,322	X 3,108	133"	3,378	137"	3,480	139.655"	3,547	216	98
62.625" X 147.25"		1,591	X 3,740	160"	4,064	163.438"	4,151	166.093"	4,219	252	114

Screen materials may expand and contract slightly over time. SI allows a 1.5% tolerance within the viewing surface.