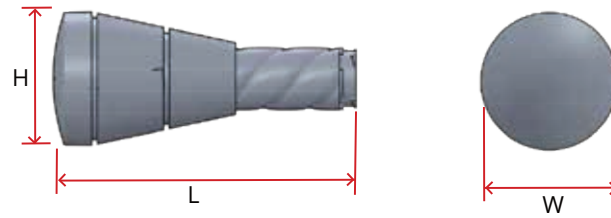


Cone Finial with Finial Extension Dimensions

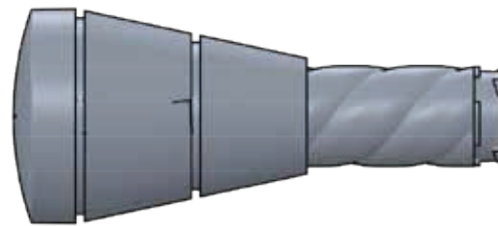
As part of the Revolve program, several finial options are offered in both finish matched aluminum as well as acrylic, with the acrylic options available with or without a ferrule. Finials attach to a finial extension, which then slots into the bracket for a seamless yet functional design.



DIMENSIONS

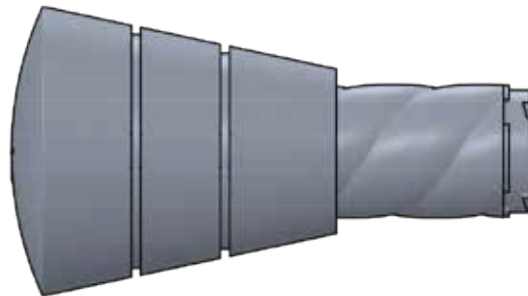
1.125" ROD

Width	2.40"
Height	2.40"
Length	5.48"



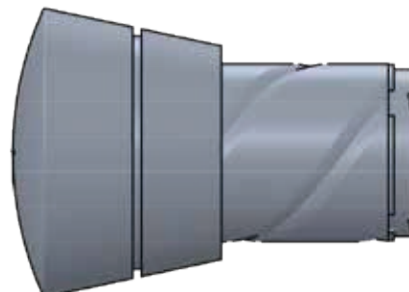
1.5" ROD

Width	3.243"
Height	3.243"
Length	5.83"



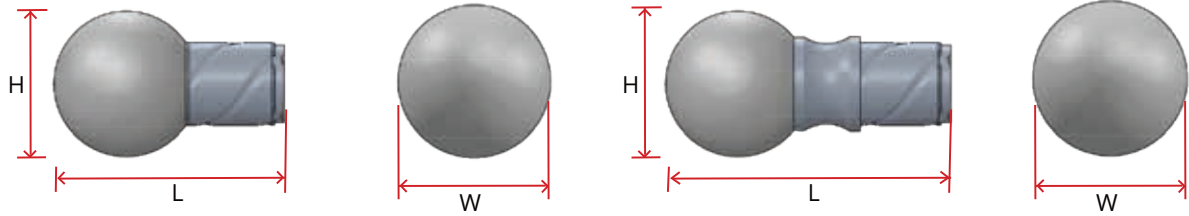
2.0" ROD

Width	3.244"
Height	3.244"
Length	4.53"



Acrylic Sphere Finial with Extension Dimensions

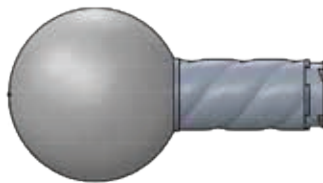
As part of the Revolve program, several finial options are offered in both finish matched aluminum as well as acrylic, with the acrylic options available with or without a ferrule. Finials attach to a finial extension, which then slots into the bracket for a seamless yet functional design.



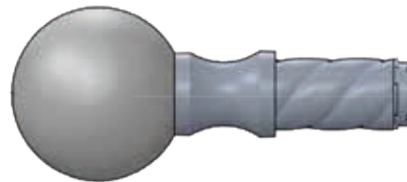
DIMENSIONS

1.125" ROD

Width	2.75"
Height	2.75"
Length	5.01"



without Ferrule

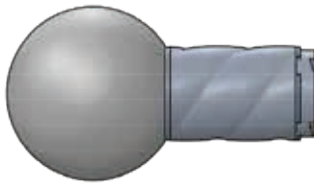


with Ferrule

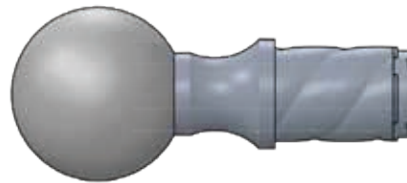
Width	2.75"
Height	2.75"
Length	6.37"

1.5" ROD

Width	2.75"
Height	2.75"
Length	5.01"



without Ferrule

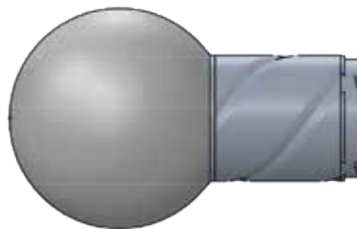


with Ferrule

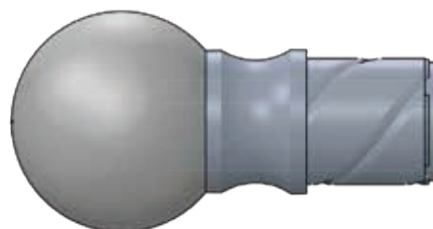
Width	2.75"
Height	2.75"
Length	6.37"

2.0" ROD

Width	3.50"
Height	3.50"
Length	5.57"



without Ferrule

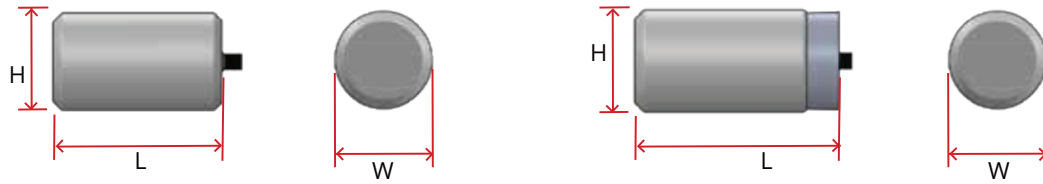


with Ferrule

Width	3.50"
Height	3.50"
Length	6.87"

Acrylic Cylinder Dimensions

As part of the Revolve program, several finial options are offered in both finish matched aluminum as well as acrylic, with the acrylic options available with or without a ferrule. Finials attach to a finial extension, which then slots into the bracket for a seamless yet functional design.



DIMENSIONS

1.125" ROD

Width	1.38"
Height	1.38"
Length	2.83"



without Ferrule



with Ferrule

Width	1.38"
Height	1.38"
Length	3.49"

1.5" ROD

Width	1.86"
Height	1.86"
Length	3.34"



without Ferrule



with Ferrule

Width	1.86"
Height	1.86"
Length	3.89"

2.0" ROD

Width	2.39"
Height	2.39"
Length	4.35"



without Ferrule

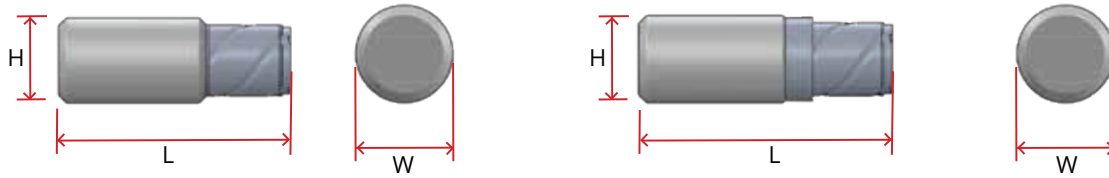


with Ferrule

Width	2.39"
Height	2.39"
Length	4.77"

Acrylic Cylinder Finial with Extension Dimensions

As part of the Revolve program, several finial options are offered in both finish matched aluminum as well as acrylic, with the acrylic options available with or without a ferrule. Finials attach to a finial extension, which then slots into the bracket for a seamless yet functional design.



DIMENSIONS

1.125" ROD

Width	1.38"
Height	1.38"
Length	5.21"



without Ferrule



with Ferrule

Width	1.38"
Height	1.38"
Length	5.69"

1.5" ROD

Width	1.86"
Height	1.86"
Length	5.72"



without Ferrule



with Ferrule

Width	1.86"
Height	1.86"
Length	6.16"

2.0" ROD

Width	2.39"
Height	2.39"
Length	6.51"



without Ferrule

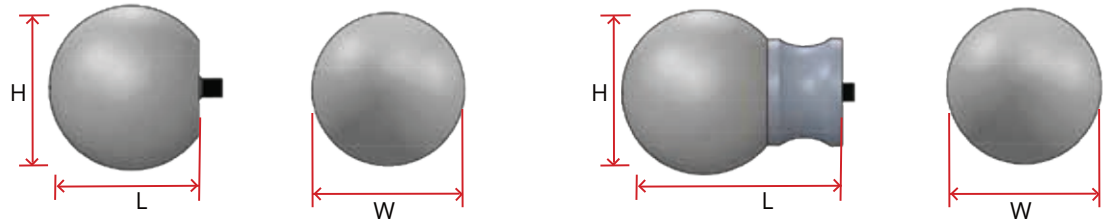


with Ferrule

Width	2.39"
Height	2.39"
Length	6.95"

Acrylic Sphere Finial Dimensions

As part of the Revolve program, several finial options are offered in both finish matched aluminum as well as acrylic, with the acrylic options available with or without a ferrule. Finials attach to a finial extension, which then slots into the bracket for a seamless yet functional design.



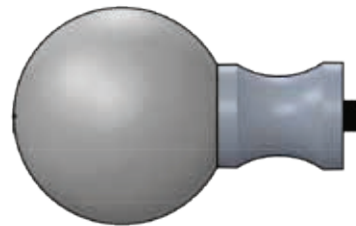
DIMENSIONS

1.125" ROD

Width	2.75"
Height	2.75"
Length	2.63"



without Ferrule



with Ferrule

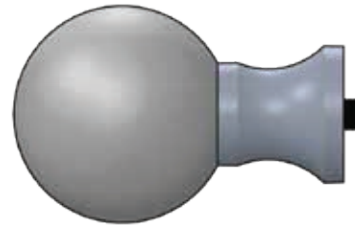
Width	2.75"
Height	2.75"
Length	4.19"

1.5" ROD

Width	2.75"
Height	2.75"
Length	2.63"



without Ferrule



with Ferrule

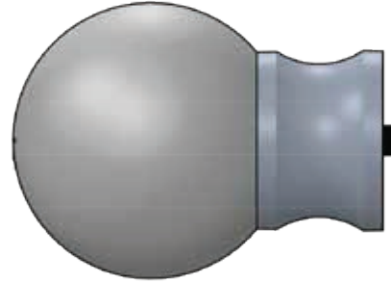
Width	2.75"
Height	2.75"
Length	4.19"

2.0" ROD

Width	3.50"
Height	3.50"
Length	3.19"



without Ferrule

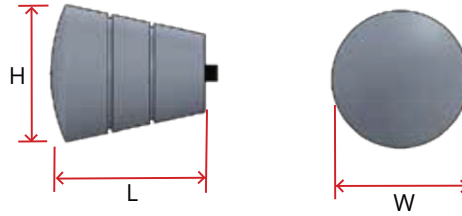


with Ferrule

Width	3.50"
Height	3.50"
Length	4.69"

Cone Finial Dimensions

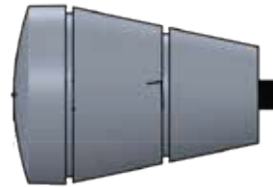
As part of the Revolve program, several finial options are offered in both finish matched aluminum as well as acrylic, with the acrylic options available with or without a ferrule. Finials attach to a finial extension, which then slots into the bracket for a seamless yet functional design.



DIMENSIONS

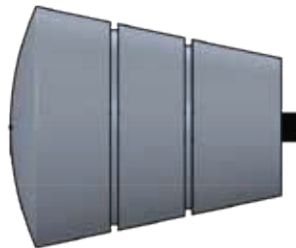
1.125" ROD

Width	2.40"
Height	2.40"
Length	3.30"



1.5" ROD

Width	3.243"
Height	3.243"
Length	3.65"



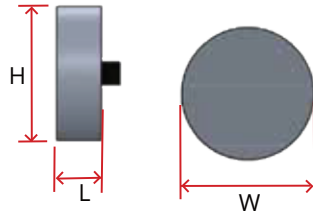
2.0" ROD

Width	3.244"
Height	3.244"
Length	2.35"



End Cap Finial Dimensions

As part of the Revolve program, several finial options are offered in both finish matched aluminum as well as acrylic, with the acrylic options available with or without a ferrule. Finials attach to a finial extension, which then slots into the bracket for a seamless yet functional design.



DIMENSIONS

1.125" ROD

Width	1.38"
Height	1.38"
Length	0.75"



1.5" ROD

Width	1.75"
Height	1.75"
Length	0.75"



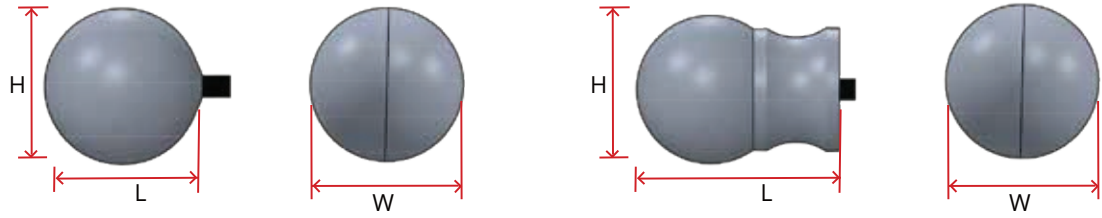
2.0" ROD

Width	2.75"
Height	2.75"
Length	0.75"



Metal Sphere Finial Dimensions

As part of the Revolve program, several finial options are offered in both finish matched aluminum as well as acrylic, with the acrylic options available with or without a ferrule. Finials attach to a finial extension, which then slots into the bracket for a seamless yet functional design.



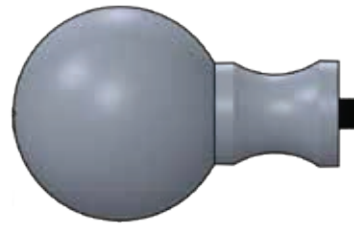
DIMENSIONS

1.125" ROD

Width	2.75"
Height	2.75"
Length	2.79"



without Ferrule



with Ferrule

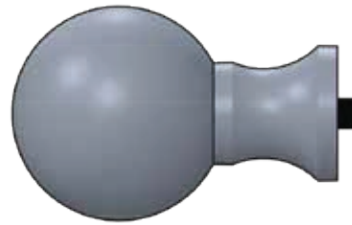
Width	2.75"
Height	2.75"
Length	4.19"

1.5" ROD

Width	2.75"
Height	2.75"
Length	2.79"



without Ferrule



with Ferrule

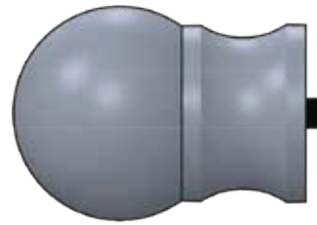
Width	2.75"
Height	2.75"
Length	4.19"

2.0" ROD

Width	2.75"
Height	2.75"
Length	2.79"



without Ferrule

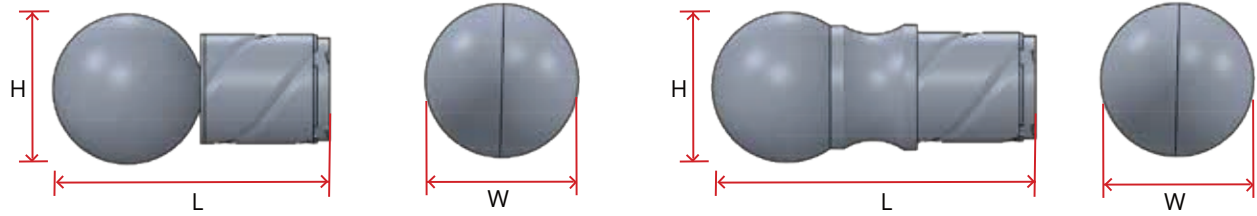


with Ferrule

Width	2.75"
Height	2.75"
Length	4.19"

Metal Sphere Finial with Extension Dimensions

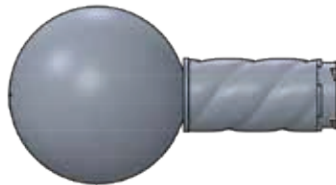
As part of the Revolve program, several finial options are offered in both finish matched aluminum as well as acrylic, with the acrylic options available with or without a ferrule. Finials attach to a finial extension, which then slots into the bracket for a seamless yet functional design.



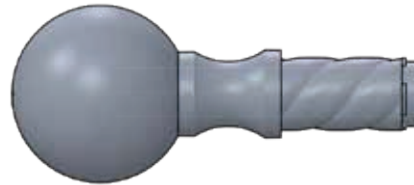
DIMENSIONS

1.125" ROD

Width	2.75"
Height	2.75"
Length	5.10"



without Ferrule

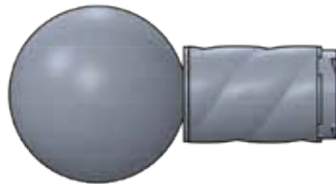


with Ferrule

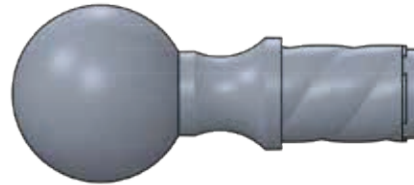
Width	2.75"
Height	2.75"
Length	6.37"

1.5" ROD

Width	2.75"
Height	2.75"
Length	5.10"



without Ferrule

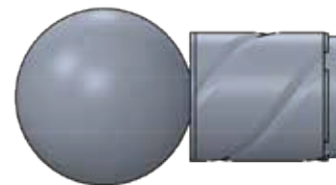


with Ferrule

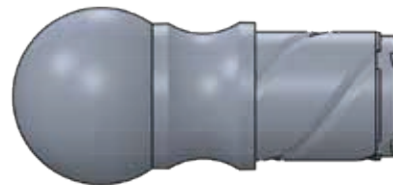
Width	2.75"
Height	2.75"
Length	6.37"

2.0" ROD

Width	2.75"
Height	2.75"
Length	5.10"



without Ferrule

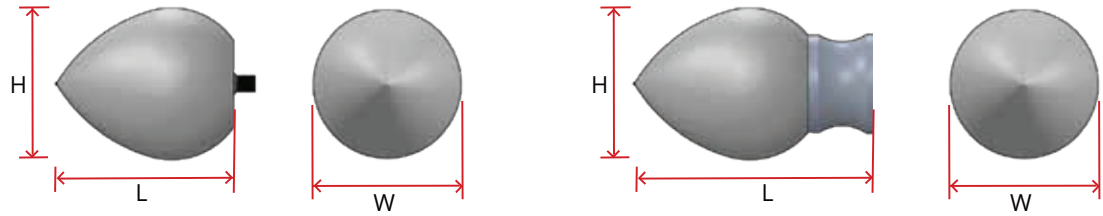


with Ferrule

Width	2.75"
Height	2.75"
Length	6.37"

Acrylic Teardrop Finial Dimensions

As part of the Revolve program, several finial options are offered in both finish matched aluminum as well as acrylic, with the acrylic options available with or without a ferrule. Finials attach to a finial extension, which then slots into the bracket for a seamless yet functional design.



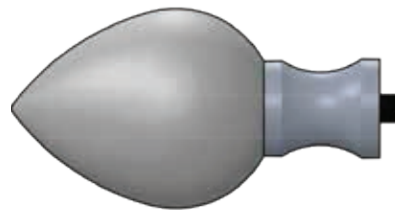
DIMENSIONS

1.125" ROD

Width	2.75"
Height	2.75"
Length	3.54"



without Ferrule



with Ferrule

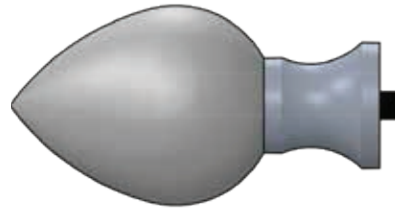
Width	2.75"
Height	2.75"
Length	5.10"

1.5" ROD

Width	2.75"
Height	2.75"
Length	3.54"



without Ferrule

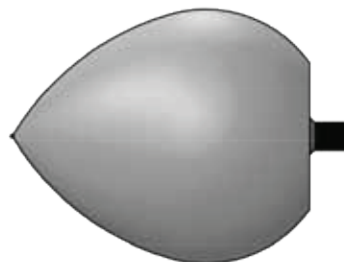


with Ferrule

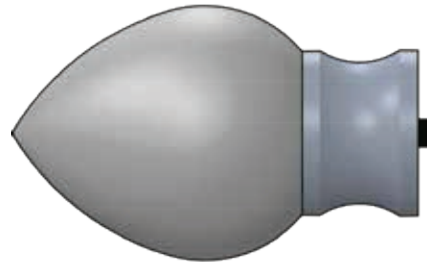
Width	2.75"
Height	2.75"
Length	5.10"

2.0" ROD

Width	3.50"
Height	3.50"
Length	4.10"



without Ferrule

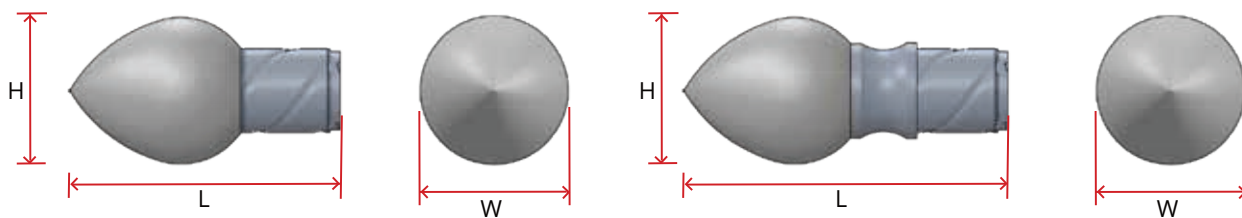


with Ferrule

Width	3.50"
Height	3.50"
Length	5.60"

Acrylic Teardrop Finial with Extension Dimensions

As part of the Revolve program, several finial options are offered in both finish matched aluminum as well as acrylic, with the acrylic options available with or without a ferrule. Finials attach to a finial extension, which then slots into the bracket for a seamless yet functional design.



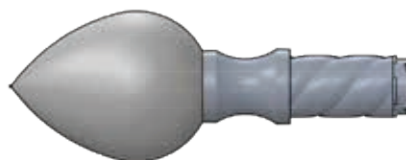
DIMENSIONS

1.125" ROD

Width	2.75"
Height	2.75"
Length	5.92"



without Ferrule

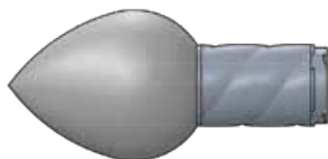


with Ferrule

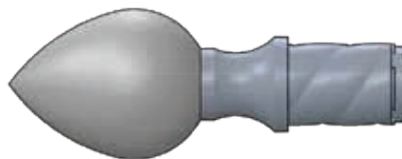
Width	2.75"
Height	2.75"
Length	7.28"

1.5" ROD

Width	2.75"
Height	2.75"
Length	5.92"



without Ferrule

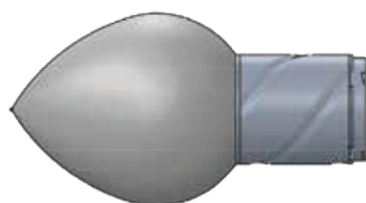


with Ferrule

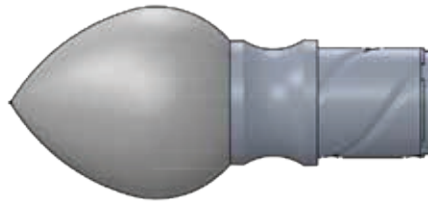
Width	2.75"
Height	2.75"
Length	7.28"

2.0" ROD

Width	3.50"
Height	3.50"
Length	6.48"



without Ferrule



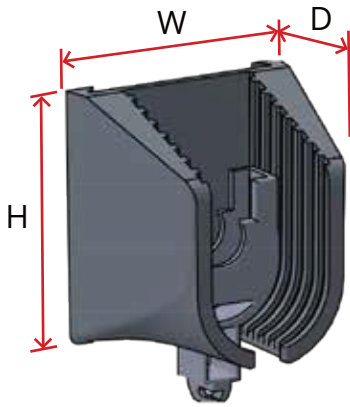
with Ferrule

Width	3.50"
Height	3.50"
Length	7.78"

Inside Mount Brackets

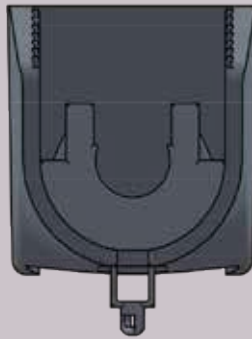
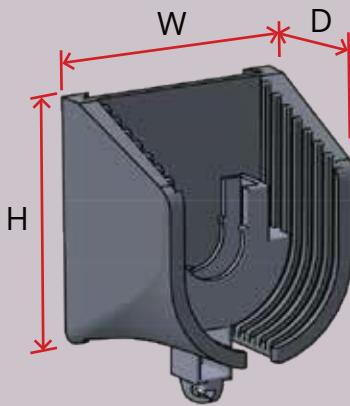
Revolve by Current Luxury offers easy to install inside mount brackets.

DIMENSIONS



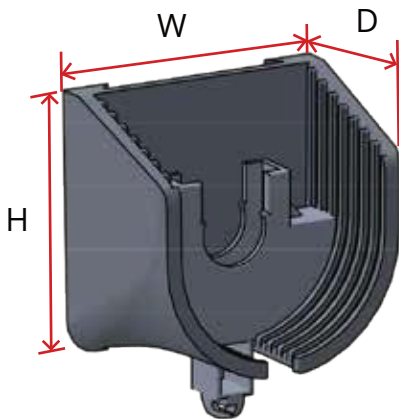
1.125" Rod

Width	2.18"
Height	2.35"
Depth	1.75"



1.5" Rod

Width	2.18"
Height	2.35"
Depth	1.75"

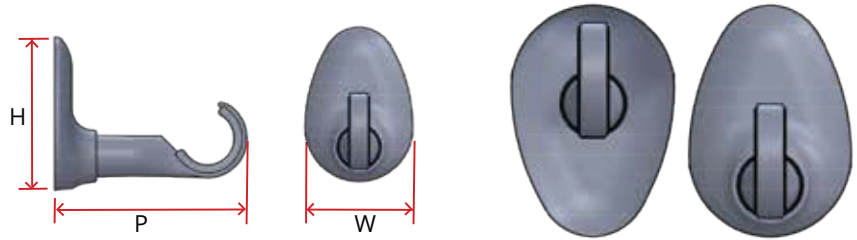


2.0" Rod

Width	2.56"
Height	2.48"
Depth	1.75"

Brackets for Manual Rods

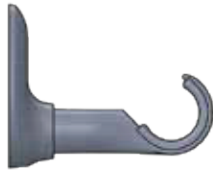
Revolve by Current Luxury offers brackets in two base shapes: Round and Teardrop, and a variety of projections. The teardrop brackets can be installed in either orientation based on the desired look of the install.



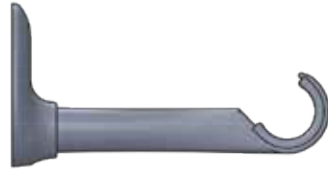
DIMENSIONS

1.125" MANUAL ROD

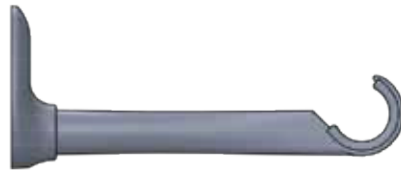
Width	2.28"
Height	3.25"
Projection	4.09"



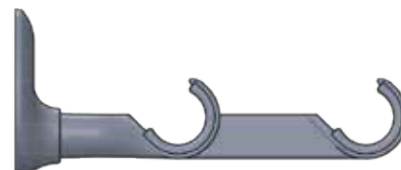
Width	2.28"
Height	3.25"
Projection	6.34"



Width	2.28"
Height	3.25"
Projection	7.84"

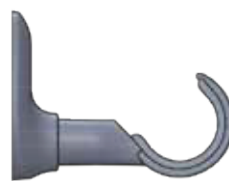


DUAL ROD	
Width	2.28"
Height	3.25"
Projection	7.84"

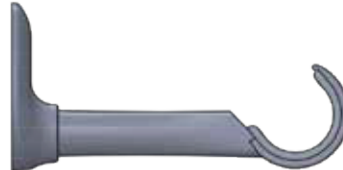


1.50" MANUAL ROD

Width	2.28"
Height	3.25"
Projection	4.30"

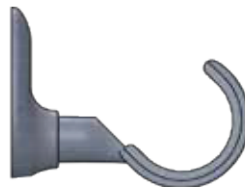


Width	2.28"
Height	3.25"
Projection	6.55"



2.0" MANUAL ROD

Width	2.28"
Height	3.25"
Projection	4.56"

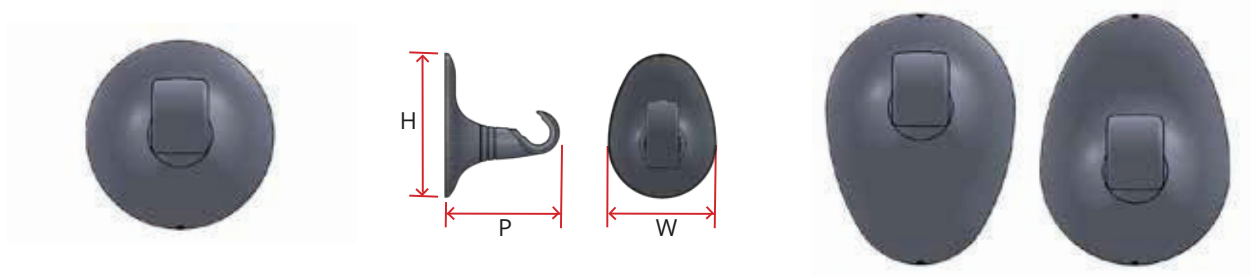


DUAL ROD	
Width	2.28"
Height	3.25"
Projection	6.81"











Brackets for Motorized Rods

Revolve by Current Luxury offers brackets in two base shapes: Round and Teardrop, and a variety of projections. The teardrop brackets can be installed in either orientation based on the desired look of the install.

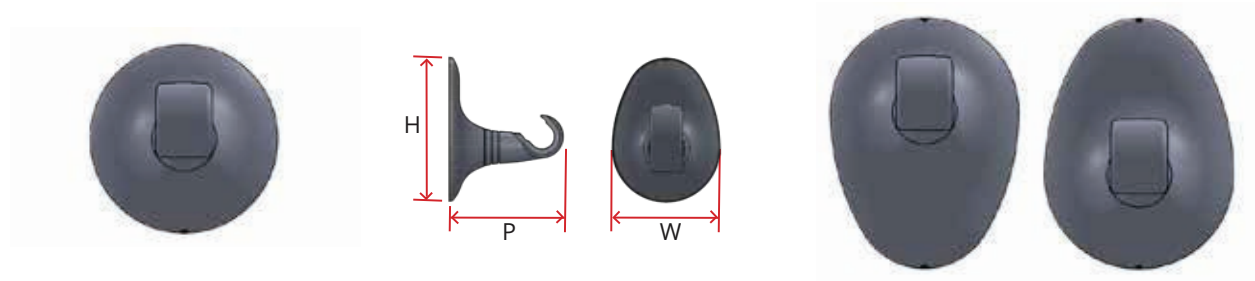


DIMENSIONS 1.25" Brackets with Round and Teardrop Bases and Projections

ROUND BASE		TEARDROP BASE																	
<table><tr><td>Width</td><td>3.75"</td></tr><tr><td>Height</td><td>3.75"</td></tr><tr><td>Projection</td><td>3.98"</td></tr></table>	Width	3.75"	Height	3.75"	Projection	3.98"			<table><tr><td>Width</td><td>3.74"</td></tr><tr><td>Height</td><td>5.00"</td></tr><tr><td>Projection</td><td>3.98"</td></tr></table>	Width	3.74"	Height	5.00"	Projection	3.98"				
Width	3.75"																		
Height	3.75"																		
Projection	3.98"																		
Width	3.74"																		
Height	5.00"																		
Projection	3.98"																		
<table><tr><td>Width</td><td>3.75"</td></tr><tr><td>Height</td><td>3.75"</td></tr><tr><td>Projection</td><td>6.23"</td></tr></table>	Width	3.75"	Height	3.75"	Projection	6.23"			<table><tr><td>Width</td><td>3.74"</td></tr><tr><td>Height</td><td>5.00"</td></tr><tr><td>Projection</td><td>6.23"</td></tr></table>	Width	3.74"	Height	5.00"	Projection	6.23"				
Width	3.75"																		
Height	3.75"																		
Projection	6.23"																		
Width	3.74"																		
Height	5.00"																		
Projection	6.23"																		
<table><tr><td>Width</td><td>3.75"</td></tr><tr><td>Height</td><td>3.75"</td></tr><tr><td>Projection</td><td>7.73"</td></tr></table>	Width	3.75"	Height	3.75"	Projection	7.73"			<table><tr><td>Width</td><td>3.74"</td></tr><tr><td>Height</td><td>5.00"</td></tr><tr><td>Projection</td><td>7.73"</td></tr></table>	Width	3.74"	Height	5.00"	Projection	7.73"				
Width	3.75"																		
Height	3.75"																		
Projection	7.73"																		
Width	3.74"																		
Height	5.00"																		
Projection	7.73"																		
<table><tr><td colspan="2">DUAL ROD</td></tr><tr><td>Width</td><td>3.75"</td></tr><tr><td>Height</td><td>3.75"</td></tr><tr><td>Projection</td><td>7.73"</td></tr></table>	DUAL ROD		Width	3.75"	Height	3.75"	Projection	7.73"			<table><tr><td colspan="2">DUAL ROD</td></tr><tr><td>Width</td><td>3.74"</td></tr><tr><td>Height</td><td>5.00"</td></tr><tr><td>Projection</td><td>7.73"</td></tr></table>	DUAL ROD		Width	3.74"	Height	5.00"	Projection	7.73"
DUAL ROD																			
Width	3.75"																		
Height	3.75"																		
Projection	7.73"																		
DUAL ROD																			
Width	3.74"																		
Height	5.00"																		
Projection	7.73"																		

Brackets for Motorized Rods

Revolve by Current Luxury offers brackets in two base shapes: Round and Teardrop, and a variety of projections. The teardrop brackets can be installed in either orientation based on the desired look of the install.



DIMENSIONS 1.5" Brackets with Round and Teardrop Bases and Projections

ROUND BASE		TEARDROP BASE													
<table><tr><td>Width</td><td>3.75"</td></tr><tr><td>Height</td><td>3.75"</td></tr><tr><td>Projection</td><td>4.17"</td></tr></table>	Width	3.75"	Height	3.75"	Projection	4.17"			<table><tr><td>Width</td><td>3.74"</td></tr><tr><td>Height</td><td>5.00"</td></tr><tr><td>Projection</td><td>4.17"</td></tr></table>	Width	3.74"	Height	5.00"	Projection	4.17"
Width	3.75"														
Height	3.75"														
Projection	4.17"														
Width	3.74"														
Height	5.00"														
Projection	4.17"														
<table><tr><td>Width</td><td>3.75"</td></tr><tr><td>Height</td><td>3.75"</td></tr><tr><td>Projection</td><td>6.42"</td></tr></table>	Width	3.75"	Height	3.75"	Projection	6.42"			<table><tr><td>Width</td><td>3.74"</td></tr><tr><td>Height</td><td>5.00"</td></tr><tr><td>Projection</td><td>6.42"</td></tr></table>	Width	3.74"	Height	5.00"	Projection	6.42"
Width	3.75"														
Height	3.75"														
Projection	6.42"														
Width	3.74"														
Height	5.00"														
Projection	6.42"														

DIMENSIONS 2.0" Brackets with Round and Teardrop Bases and Projections

ROUND BASE		TEARDROP BASE													
<table><tr><td>Width</td><td>3.75"</td></tr><tr><td>Height</td><td>3.75"</td></tr><tr><td>Projection</td><td>4.42"</td></tr></table>	Width	3.75"	Height	3.75"	Projection	4.42"			<table><tr><td>Width</td><td>3.74"</td></tr><tr><td>Height</td><td>5.00"</td></tr><tr><td>Projection</td><td>4.42"</td></tr></table>	Width	3.74"	Height	5.00"	Projection	4.42"
Width	3.75"														
Height	3.75"														
Projection	4.42"														
Width	3.74"														
Height	5.00"														
Projection	4.42"														
<table><tr><td>Width</td><td>3.75"</td></tr><tr><td>Height</td><td>3.75"</td></tr><tr><td>Projection</td><td>6.66"</td></tr></table>	Width	3.75"	Height	3.75"	Projection	6.66"			<table><tr><td>Width</td><td>3.74"</td></tr><tr><td>Height</td><td>5.00"</td></tr><tr><td>Projection</td><td>6.66"</td></tr></table>	Width	3.74"	Height	5.00"	Projection	6.66"
Width	3.75"														
Height	3.75"														
Projection	6.66"														
Width	3.74"														
Height	5.00"														
Projection	6.66"														

