

1 MOTORIZED

Tab-Tension Motorized Screen Specification Sheet



SUGGESTED SPECIFICATIONS: _____ projection screen(s), _____ (H) x _____ (W). With our 1 Series external mounting system, you can find the perfect spot to mount your screen. The simple process has been designed to accommodate a one person installation with

minimum effort. 1 Series Motorized locks into place guaranteeing safety. We now include the latest Somfy quiet-motor technology in all of our 1 series motorized screens.

Theater HDTV (16:9) Format Dimensions (External Only)

Viewing Area H x W (C X B)				Standard Diagonal (A)		Overall Width (F)		Approx. Ship. Wt.	
in.		cm.		in.	cm.	in.	cm.	Lbs.	Kg
39"	X	70"	100 X 177	80"	203	80"	203	47	21
45"	X	80"	115 X 204	92"	234	92"	233	51	23
49"	X	87"	124 X 221	100"	254	99"	251	55	25
52"	X	92"	132 X 235	106"	269	104"	264	57	26
54"	X	96"	137 X 244	110"	279	108"	273	61	28
59"	X	105"	149 X 266	120"	305	117"	296	65	29
65"	X	116"	166 X 294	133"	338	128"	324	73	33
78"	X	139"	199 X 354	160"	406	152"	386	85	39

PRODUCT NOTES

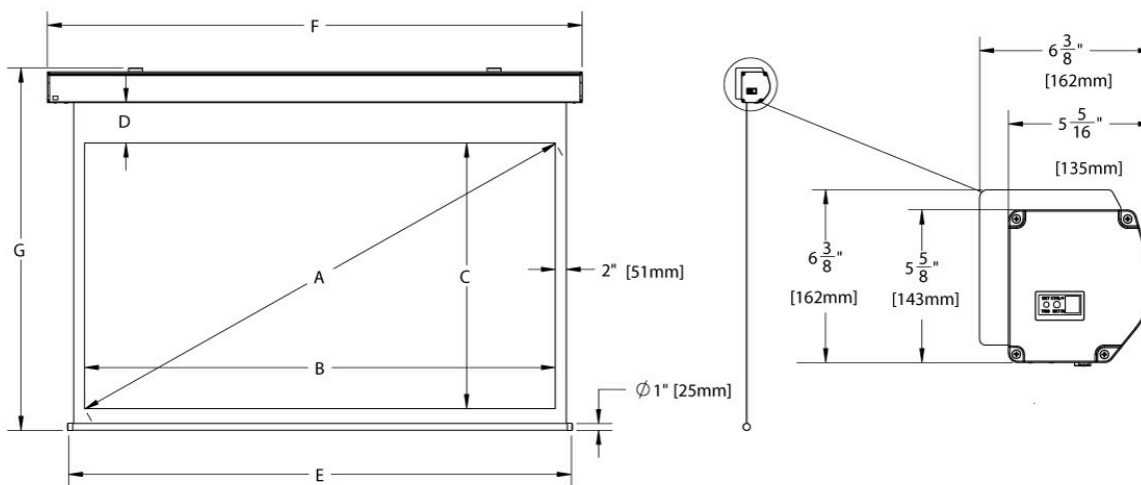
- All screens standard with 24" of black-drop at the top.
- All screens standard with wall switch, IR Remote, and low voltage trigger.
- For dimensions not listed, please see our online screen calculator.
<http://www.screeninnovations.com/tools/screen-calculator/>

MATERIAL INFORMATION

- All surfaces will be seamless.

WHEN ORDERING, MARK APPROPRIATE SELECTIONS

1. Select Size from Charts.
2. Select Screen Material
 - Gamma White 1.1 (4K)
3. Screen Options
 - 220v Motor
 - RS232/485 Control & Cable



9715-B Burnet Rd. Ste 400
Austin, TX 78758
512-832-6939
screeninnovations.com

SI7FSS2.1
© 2018 Screen Innovations.

Project Name: _____
Architect: _____
Contractor: _____ Phone _____
Reseller: _____ Phone _____