

Zero Edge Pro

Parts in the Box



INSTALLERS: PLEASE LEAVE THIS MANUAL WITH THE OWNER.



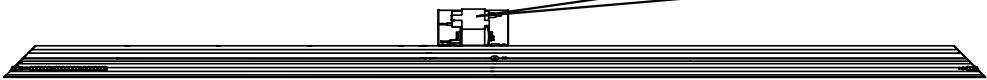
PARTS IN THE BOX - STANDARD FRAME



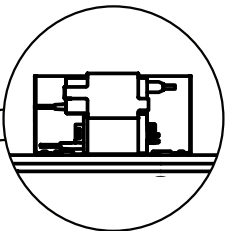
2+

Installation requires three or more people. The product weighs up to 225 lbs.
Please use safe lifting and rigging techniques.

Frame Assembly parts



(1)Horizontal Frame bottom w/ lights



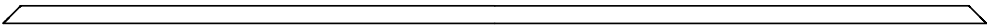
(LED Lights Only)



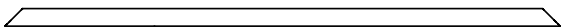
(1)Horizontal Frame top no lights



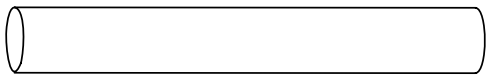
(2)Vertical Frames



(2)Horizontal trims



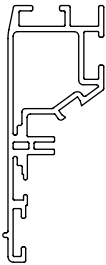
(2)Vertical trims



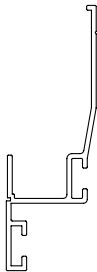
(1)Material Roll



Vertical Support Bar (used for only some
Standard frames)



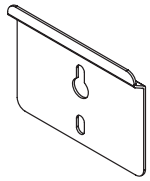
3/4" Small trim
option



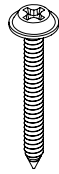
1 1/2" trim option - Standard

PARTS IN THE BOX - STANDARD FRAME

Hardware Kit



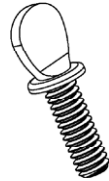
(2) Wall
Brackets



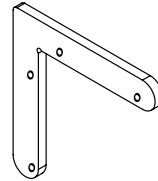
(4) Mounting
Screws



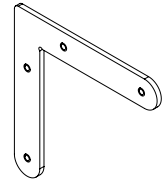
(4) 1/4-20 x 1/4"
Screws
(Small trim only)



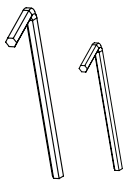
Thumb
Screws



(4) Thick Corner
Brackets w/ set
screws



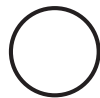
(4) Thin Corner
Brackets w/ set
screws



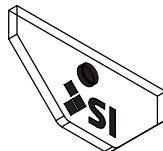
1/8" & 5/32"
Hex Keys



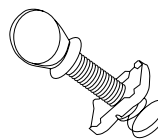
4X Gloves



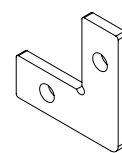
Bungees
(Maestro
only)



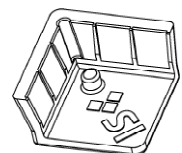
Acrylic Logo



Retrofit
Channel Nut
(AT only)



(4) Corner
Brackets for trim
assembly

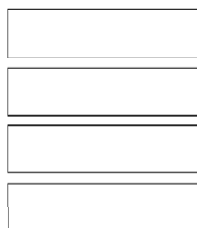


Corner
Alignment part
(BD & ST only)

LED IR Controlled Only (Seperately purchased)

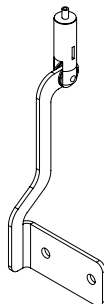


LED Remote

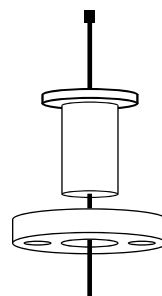


LED Foam

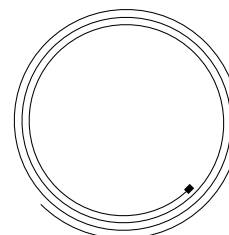
Flying Mount Only (Seperately purchased)



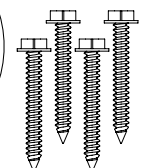
(2) Flown
Screen Mount



(2) Flown
Ceiling Mount



(2) Flown
Cables



Mounting
screws

PARTS IN THE BOX - SPLIT FRAME



2+

Installation requires three or more people. The product weighs up to 225 lbs.
Please use safe lifting and rigging techniques.

Frame Assembly parts



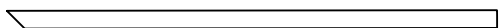
(2)Horizontal Frame bottom



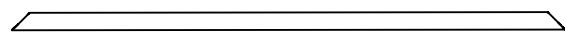
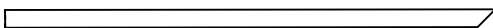
(2)Horizontal Frame top



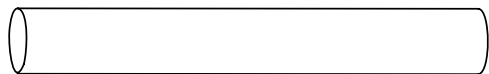
(2)Vertical Frames



(2)Horizontal trims



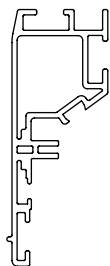
(2)Vertical trims



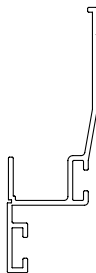
(1)Material Roll



Vertical Support Bar (used for only some
Standard frames)



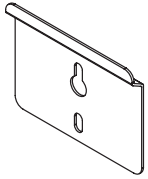
3/4" Small trim
option



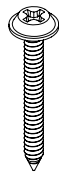
1 3/4" trim option - Split frame

PARTS IN THE BOX - SPLIT FRAME

Hardware Kit



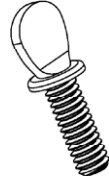
(2) Wall
Brackets



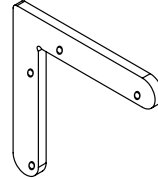
(4) Mounting
Screws



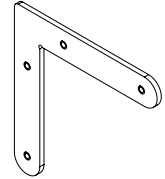
(4) 1/4-20 x 1/4"
Screws
(Small trim only)



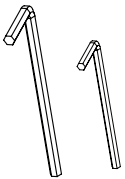
Thumb
Screws



(4) Thick Corner
Brackets w/ set
screws



(4) Thin Corner
Brackets w/ set
screws



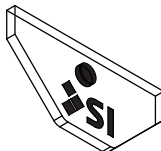
1/8" & 5/32"
Hex Keys



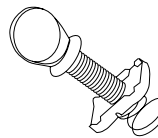
4X Gloves



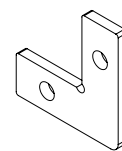
Bungees
(Maestro
only)



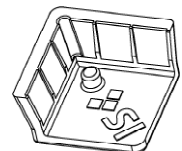
Acrylic Logo



Retrofit
Channel Nut
(AT only)



(4) Corner
Brackets for trim
assembly

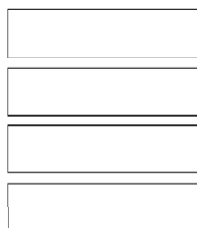


Corner
Alignment part
(BD & ST only)

LED IR Controlled Only (Seperately purchased)

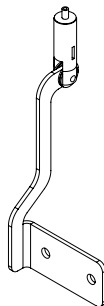


LED Remote

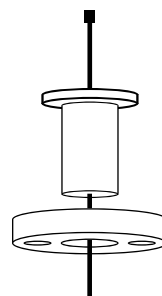


LED Foam

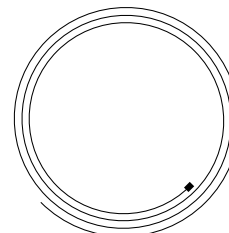
Flying Mount Only (Seperately purchased)



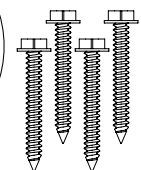
(2) Flown
Screen Mount



(2) Flown
Ceiling Mount



(2) Flown
Cables



Mounting
screws

NOTES

1.

2.

3.

4.

5.

6.


7.

8.

9.

10.

11.

 <p>Please visit support.screeninnovations.com to find all the updated documents, drivers and tutorial videos.</p>	 <p>Use this QR code to see the video tutorials for Black Diamond or Short Throw snap attachment method</p>	 <p>Use this QR code to see the video tutorials for Slate material.</p>
<p>For more technical support questions - Call: 512.832.6939 or email: support@screeninnovations.com Hours of Support: 7:30am - 5pm CST screeninnovations.com</p>		



Screen Innovations

9715-B Burnet Rd, Suite 400 Austin, TX 78758

512.832.6939

www.screeninnovations.com