

Zero Edge / Fixed

Installation Instructions

(Black Diamond & CarbonBlack
materials only)



INSTALLERS: PLEASE LEAVE THIS MANUAL WITH THE OWNER.





APPLY S/N
STICKER HERE

Limited 1 year warranty on Screen Innovations products

Screen Innovations warrants its products, to the original purchaser only, to be free from defects in materials and workmanship for a period of one (1) year from the date of purchase by the original purchaser provided they are properly operated according to Screen Innovations' instructions and are not damaged due to improper handling or treatment after shipment from the factory.

This warranty does not apply to equipment showing evidence of misuse, abuse, or accidental damage, or which has been tampered with or repaired by a person other than authorized Screen Innovations personnel.

Screen Innovations' sole obligation under this warranty shall be to repair or to replace (at Screen Innovations' option) the defective part of the merchandise. Returns for service should be made to your Screen Innovations' dealer. If it is necessary for the dealer to return the screen or part to Screen Innovations, transportation expenses to and from Screen Innovations are payable by the purchaser and Screen Innovations is not responsible for damage in shipment. To protect yourself against damage or loss in transit, insure the product and prepay all transportation expenses.

This warranty is in lieu of all other warranties, express or implied, including warranties as to fitness for use and merchant ability. Any implied warranties of fitness for use, or merchantability, that may be mandated by statute or rule of law are limited to the one (1) year warranty period. This warranty gives you specific legal rights, and you may also have other rights, which vary from state-to-state. No liability is assumed for expenses or damages resulting from interruption in operation of equipment, or for incidental, direct, or consequential damages of any nature.

In the event that there is a defect in materials or workmanship of a Screen Innovations product, you may contact our Sales Partners at 9715-B Burnet Road Suite 400, Austin, TX 78758, (512) 832-6939.

Important: this warranty shall not be valid and screen innovations shall not be bound by this warranty if the product is not operated in accordance with screen innovations' written instructions.

Keep your sales receipt to prove the date of purchase and your original ownership.

TABLE OF CONTENTS

SUGGESTED PROJECTOR PLACEMENT.....1

DETERMINE FRAME TYPE.....2

STANDARD FRAME ASSEMBLY 3 - 4

SPLIT FRAME ASSEMBLY 5 – 8

LED LIGHTS ATTACHMENT..... 9 – 10

MATERIAL ATTACHMENT SEQUENCE11

BLACK DIAMOND MATERIAL ONLY.....12

CARBONBLACK MATERIAL ONLY 13 – 14

STANDARD ZERO EDGE TRIM ATTACHMENT..... 15 – 16

FIXED 2 TRIM ATTACHMENT 17 – 18

WALL MOUNTING19

FLOWN MOUNTING.....20

IR LIGHTING HEX CODES.....21

IP (ZIGBEE) CONTROLLED LIGHTING SETUP22



Please visit support.screeninnovations.com to find all the updated documents, drivers and tutorial videos.



Use this QR code to see the video tutorials for Black Diamond or Short Throw snap attachment method



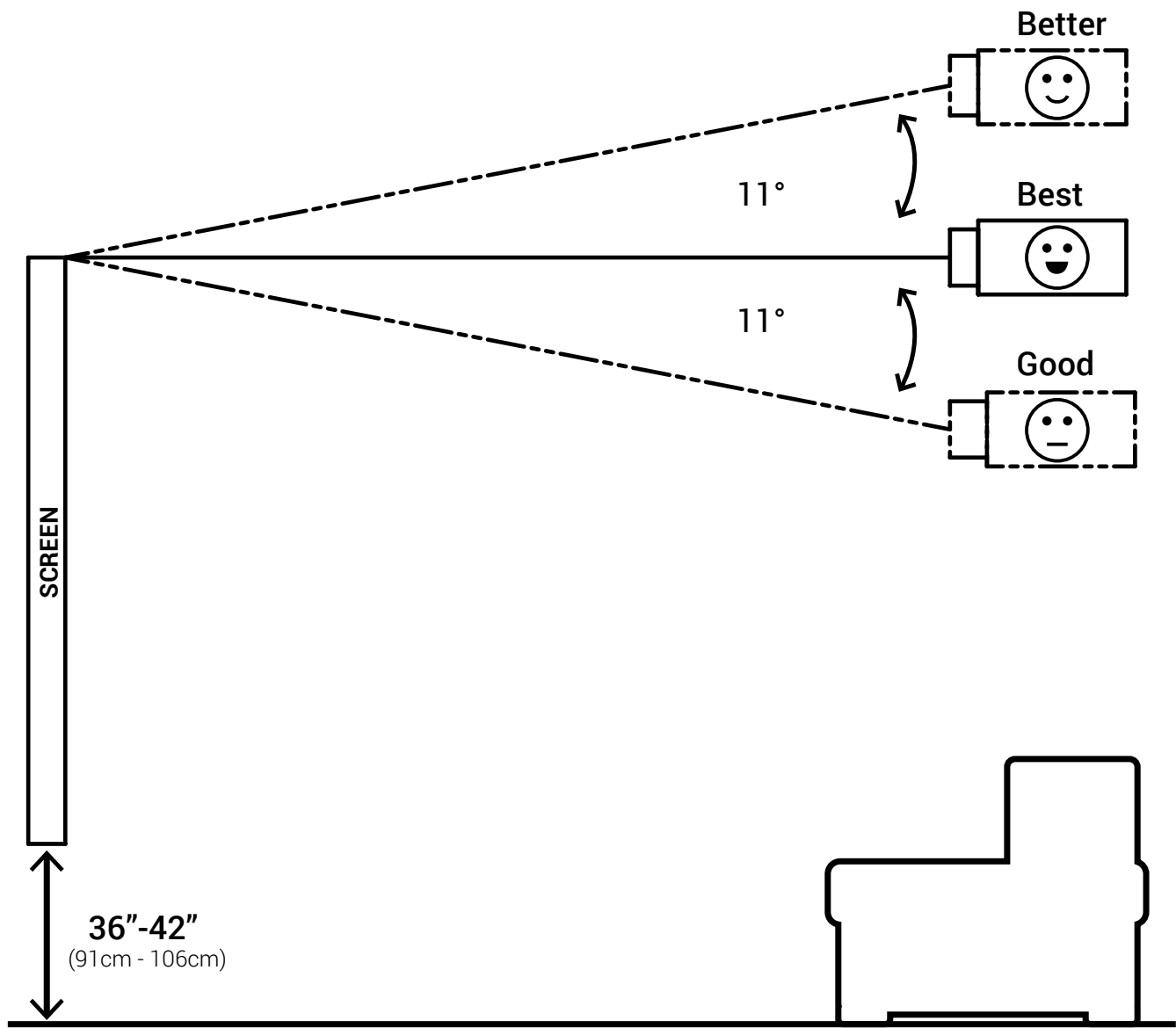
Use this QR code to see the video tutorials for Slate material.

For more technical support questions - Call: 512.832.6939 or email: support@screeninnovations.com
Hours of Support: 7:30am – 5pm CST | screeninnovations.com

SUGGESTED PROJECTOR PLACEMENT



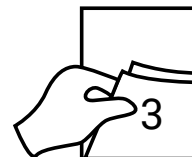
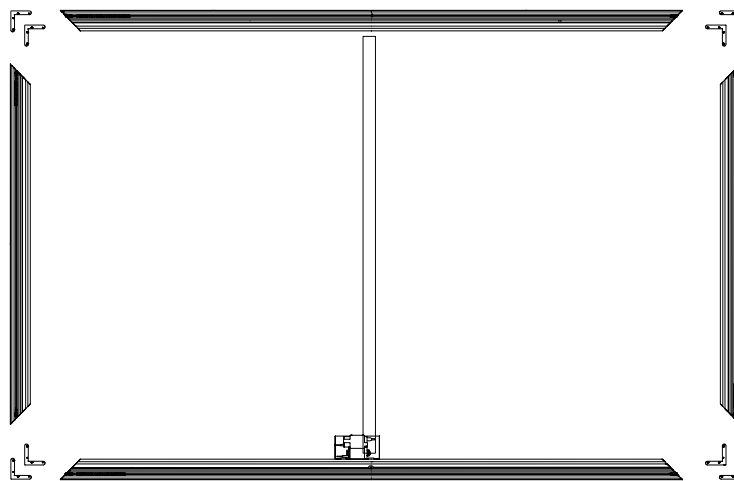
Please visit our Screen Material Wizard (screeninnovations.com/tools/screen-material-wizard/) for the minimum throw distance requirements based on screen material.



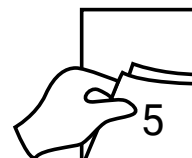
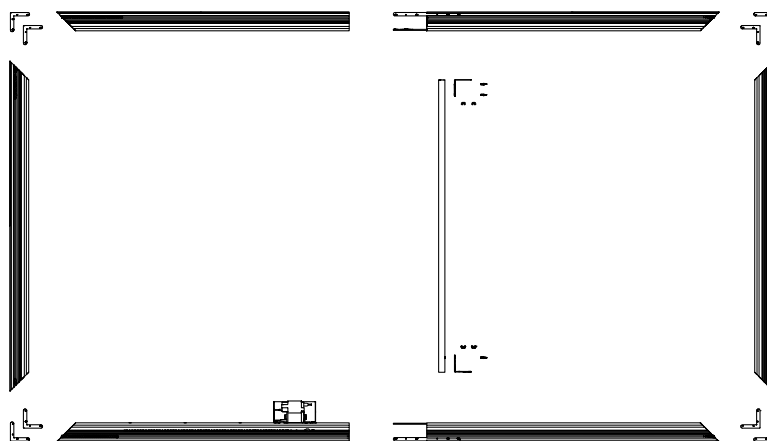
DETERMINE FRAME TYPE

NOTE: The vertical support bar is for certain models and sizes only.

Standard Frame



Split Frame



STANDARD FRAME ASSEMBLY

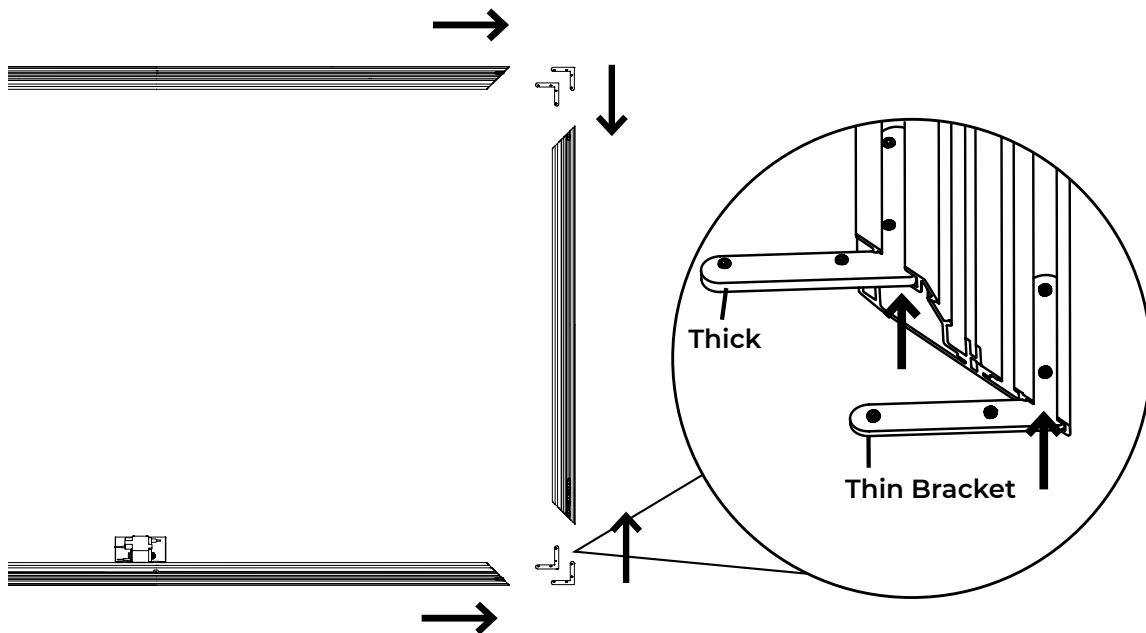
- 1 Insert the thin corner brackets into the outside channels and the thick corner brackets into the inside channels of the vertical frames. Then slide into the channels in the horizontal frames.



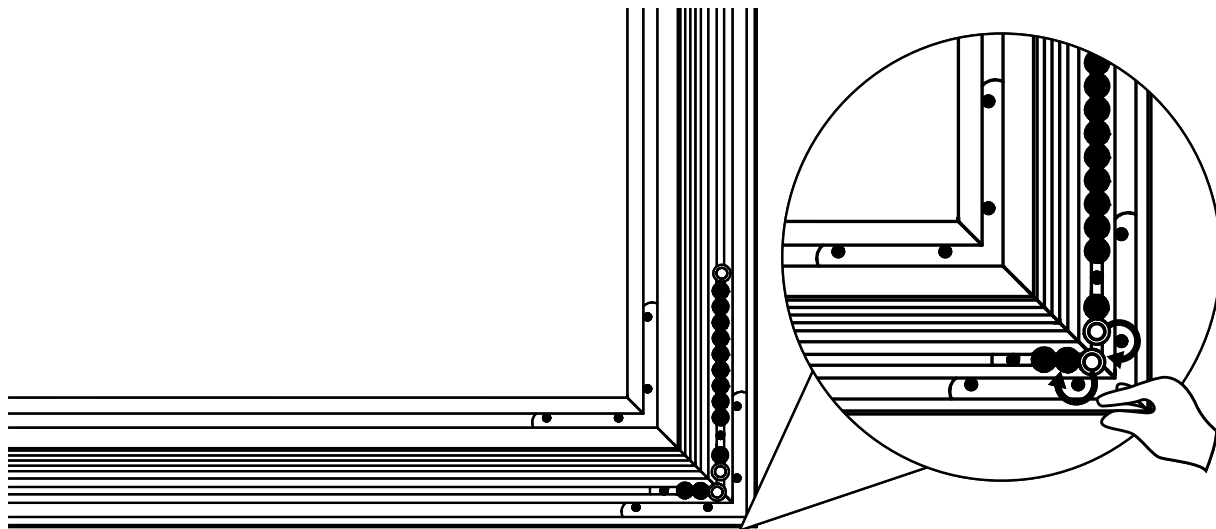
WARNING: If using AT or Maestro material, check to make sure the female channel nuts are installed in the inner channel **BEFORE** proceeding.



WARNING: If using the Decora cable fly kit, the channel nuts must be added to the frame rails **BEFORE** installing the corner brackets.



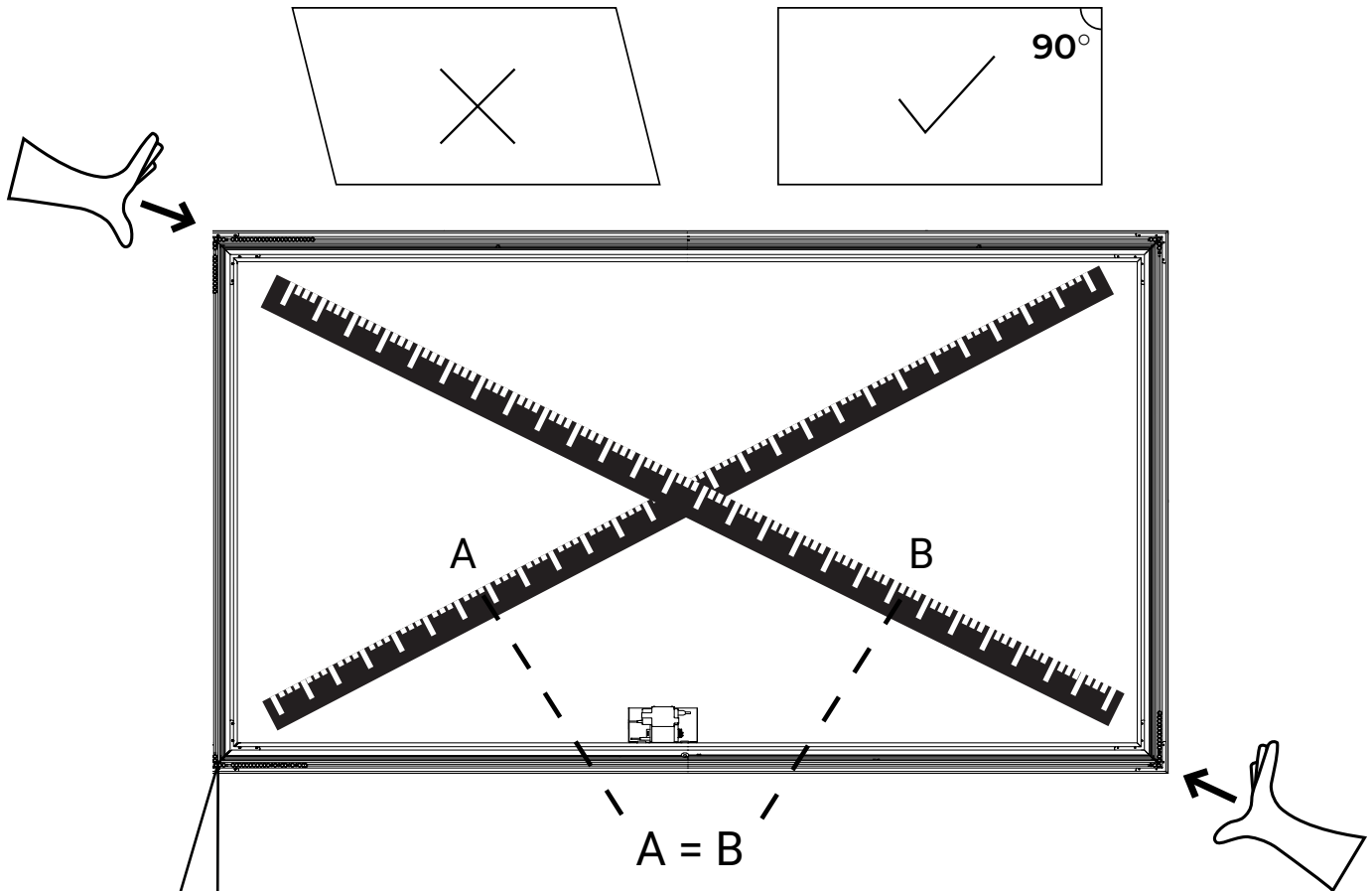
- 2 Align the edges to ensure they are at a right angle. With the included allen wrench lightly tighten two of the set screws to lock in the corners.



STANDARD FRAME ASSEMBLY

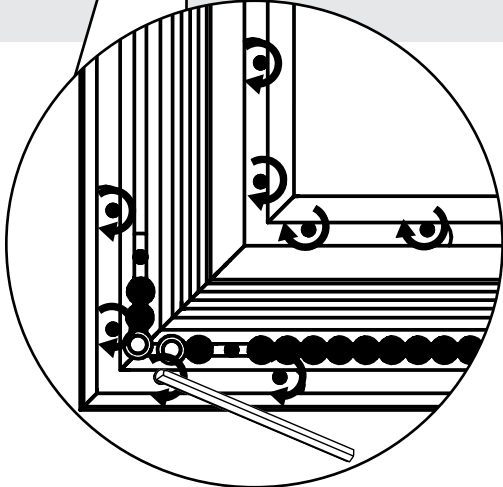
3

It is a critical step to square the frame. Refer to the illustration below.



4

Measure the diagonals to check if frame is square. If one diagonal is longer, push the corners at the diagonal. Tighten all set screws once the diagonals are equal or within 1/8".



Note: If LED lights were ordered, refer to page 9 to for instructions on attaching LED lights to the screen frame.

SPLIT FRAME ASSEMBLY

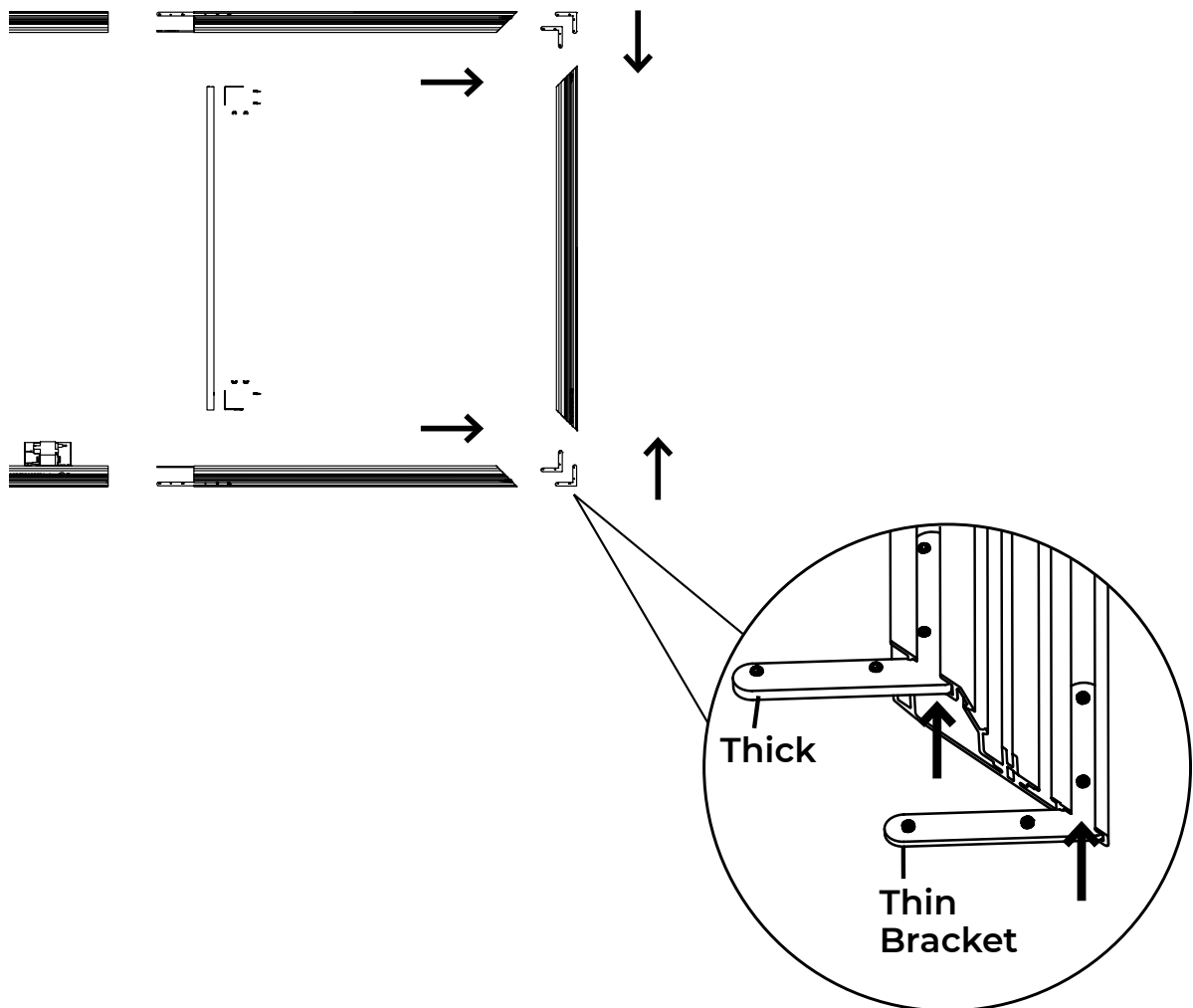
- 1 Insert the thin corner brackets into the outside channels and the thick corner brackets into the inside channels of the vertical frames. Slide brackets into the channels in the horizontal frames.



WARNING: If using AT or Maestro material, ensure the channel nuts are installed in the inner channel **BEFORE** proceeding.



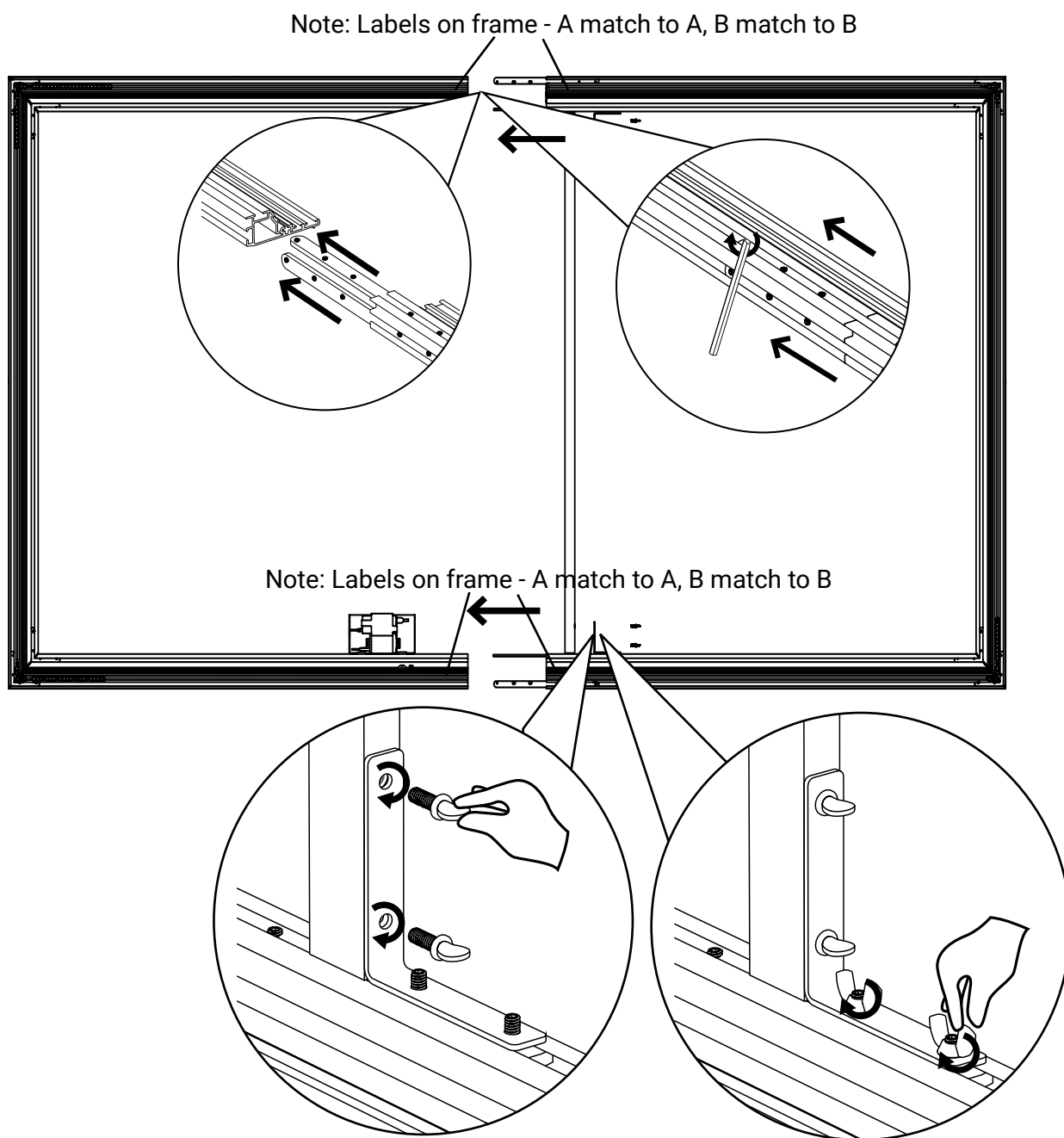
WARNING: If using the Decora cable fly kit, the channel nuts must be added to the frame rails **BEFORE** installing the corner brackets.



SPLIT FRAME ASSEMBLY

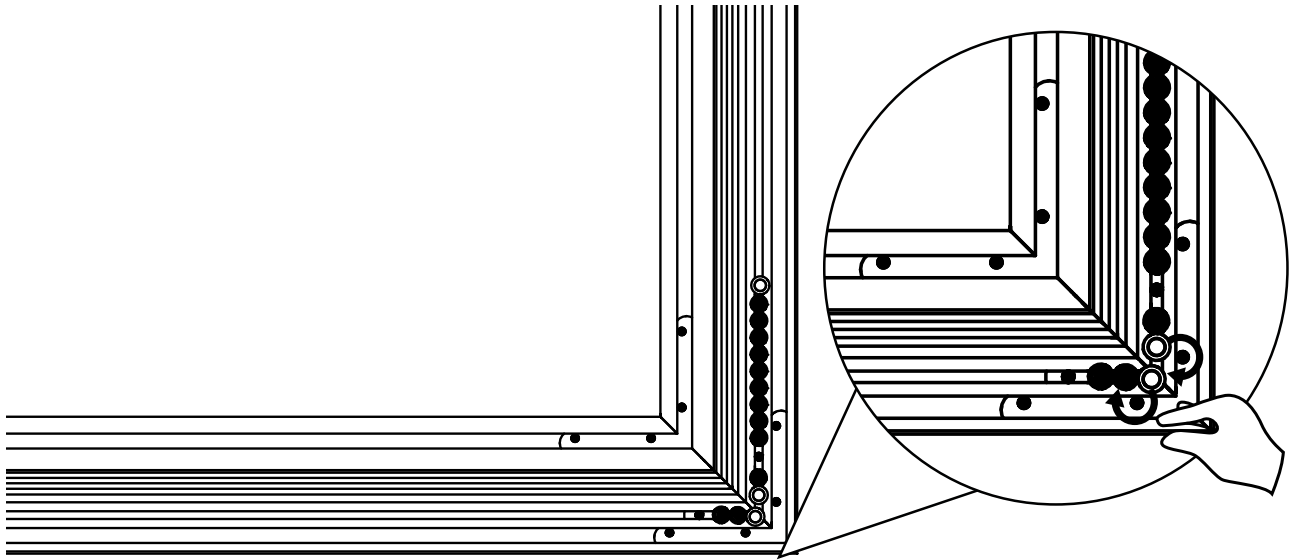
2

Slide the horizontal frame pieces together and secure with the splice bars. Attach the vertical support to the frame as shown. Fully tighten splice bars, leaving the vertical support bar loose but snug.



SPLIT FRAME ASSEMBLY

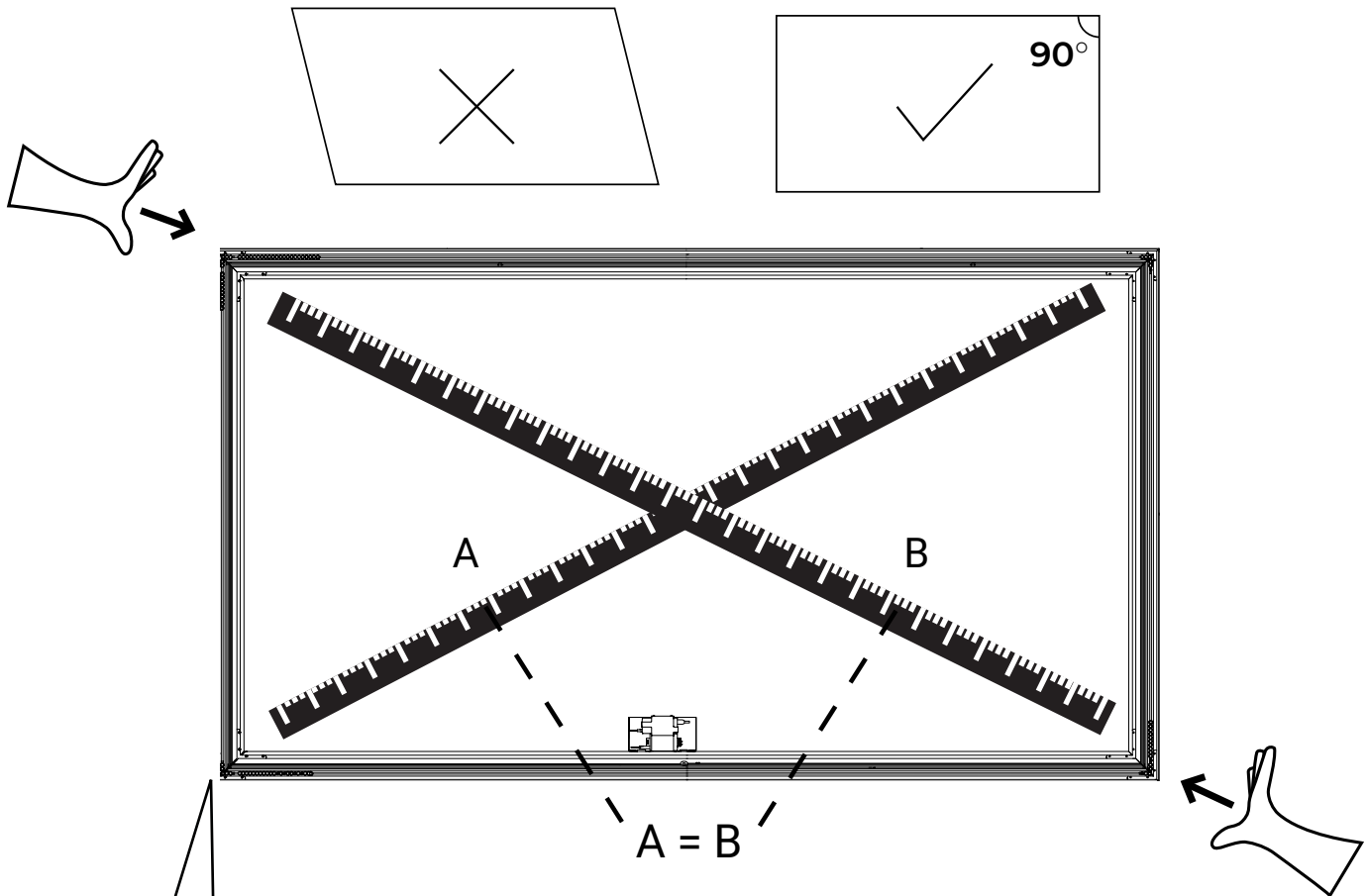
- 3** Align the edges to ensure they are at a right angle. Finger-tighten two of the set screws to lock in the corners.



SPLIT FRAME ASSEMBLY

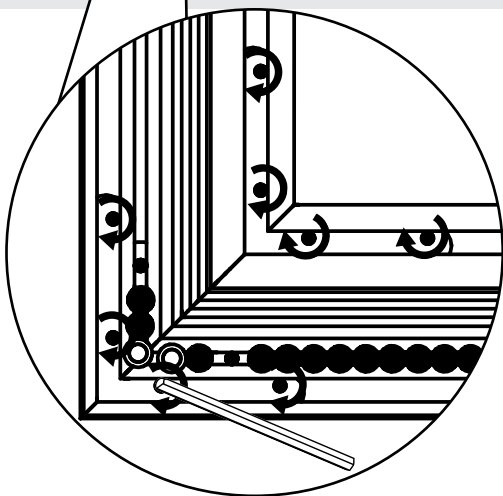
4

It is a critical step to square the frame. Refer to the illustration below.



5

Measure the diagonals to check if the frame is square. If one diagonal is longer, push on the corners at that diagonal. Tighten all set screws once the diagonals are equal or within $1/8''$.



Note: If LED lights were ordered, refer to the following page for instructions on attaching LED lights to the screen frame.

LED LIGHTS ATTACHMENT

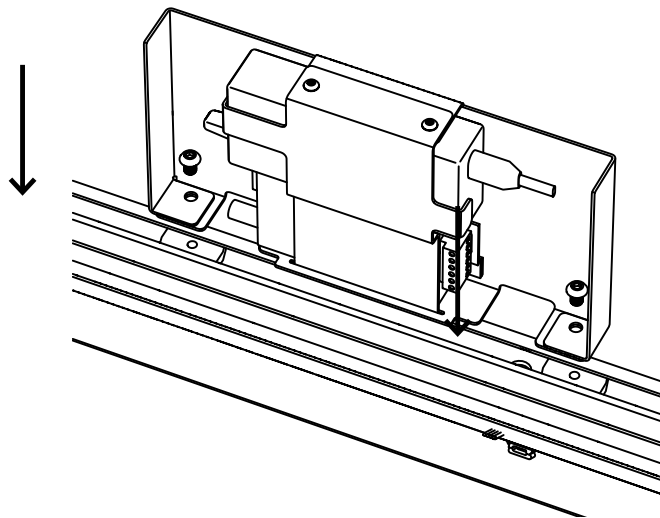


If IP-controlled LED lights are ordered, Phillips Hue Hub must be purchased and set up separately. Scan the QR code to see the instructions for setup.



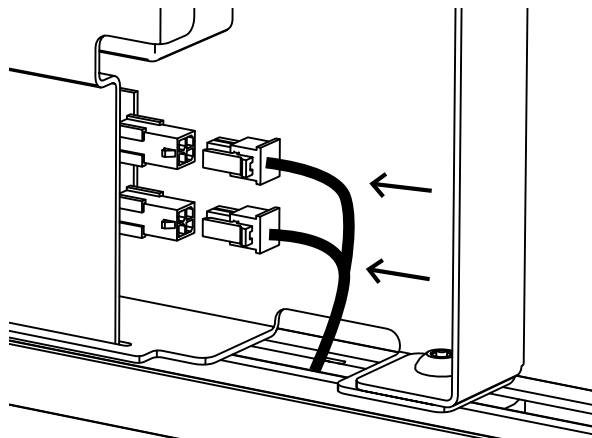
Note: The controller may already be attached from the factory on some models. If so, skip this step.

- 1 Connect the lighting harness to the nuts in the frame piece with the screws included.



- 2 Feed the wires through the provided hole.

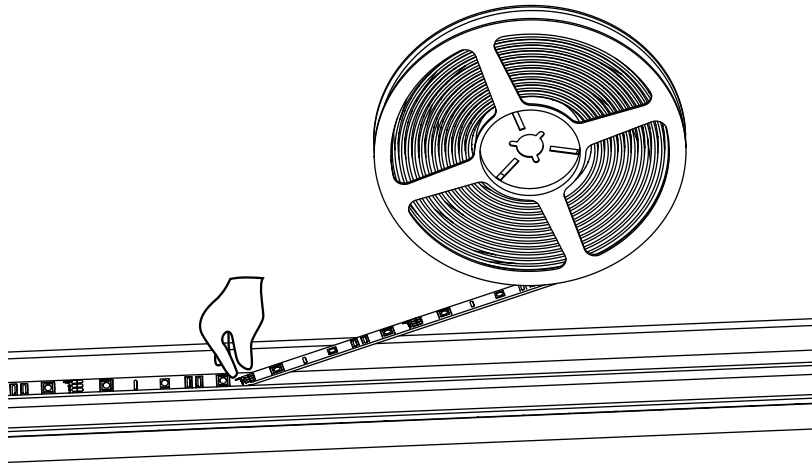
- 3 Plug the lights into the controller plugs.



LED LIGHTS ATTACHMENT

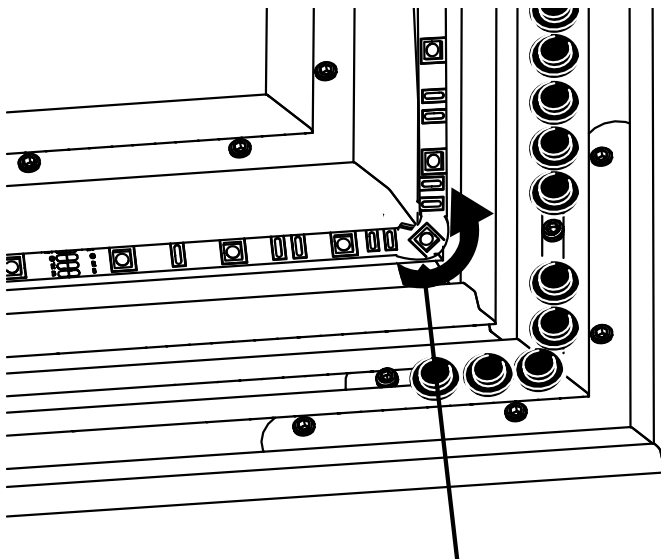
4

Note: Use caution in the next steps; do not kink or fold the light strip, which will cause damage in the circuit. Use the foam strips provided to loosely wrap LEDs around the corners.

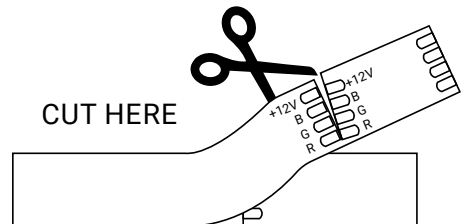


5

Press the lights into the channel on the frame. LED foam must be used when rounding the corners to protect the circuit. Failure to do so will damage the LED strips. The strip should gently round the corner.



CUT HERE



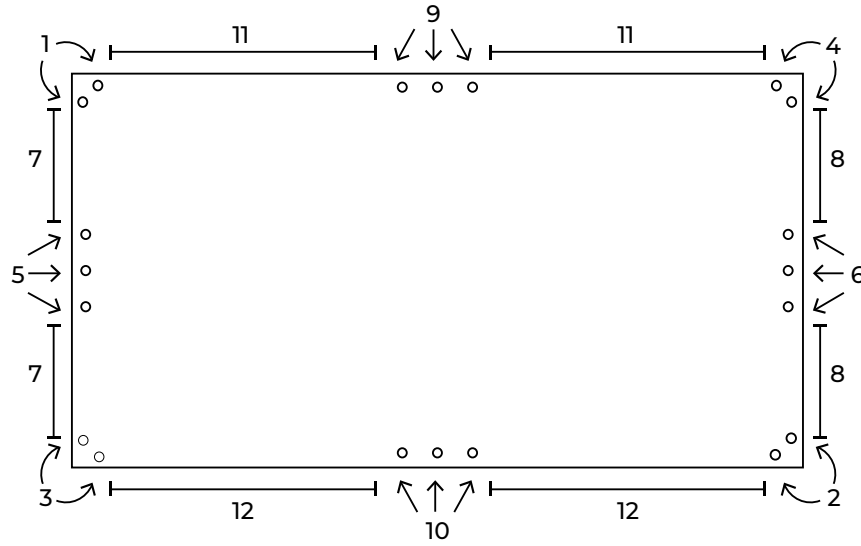
Cut the light strips at the copper pad where indicated to the correct length so they just overlap at the middle of the top frame piece. DO NOT cut the light strips at any other location.



Scan this QR code to see the video for LED kit troubleshooting.

MATERIAL ATTACHMENT SEQUENCE

Attach the snap attachments in the sequence, as shown below.



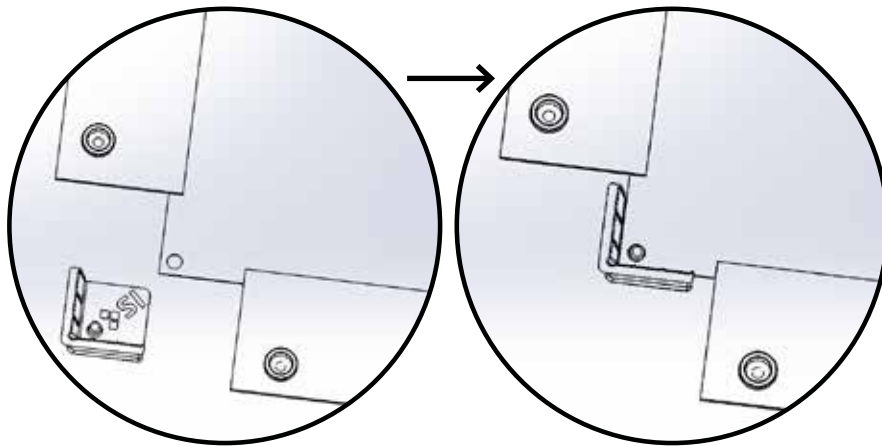
BLACK DIAMOND MATERIAL ONLY



The corner pieces are there to keep the material square with the frame during the attachment sequence (refer to attachment sequence image on page 16).

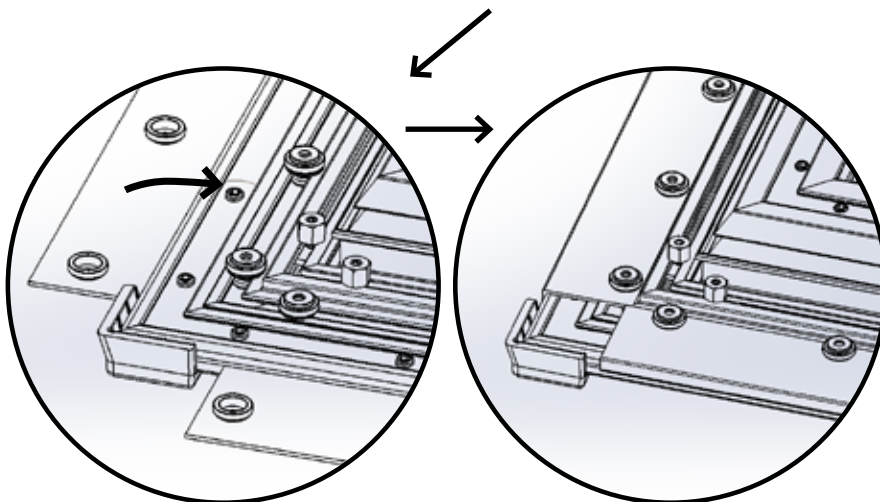
1

Black Diamond and short throw material are highly sensitive. Take particular care to not bend or crease the material as it is unrolled.



2

Then check to make sure the screen material is flat and adjust the snap positions if necessary to flatten the screen material. **Once all snaps are attached flip screen over and make sure that the screen material is flat and tight everywhere.**



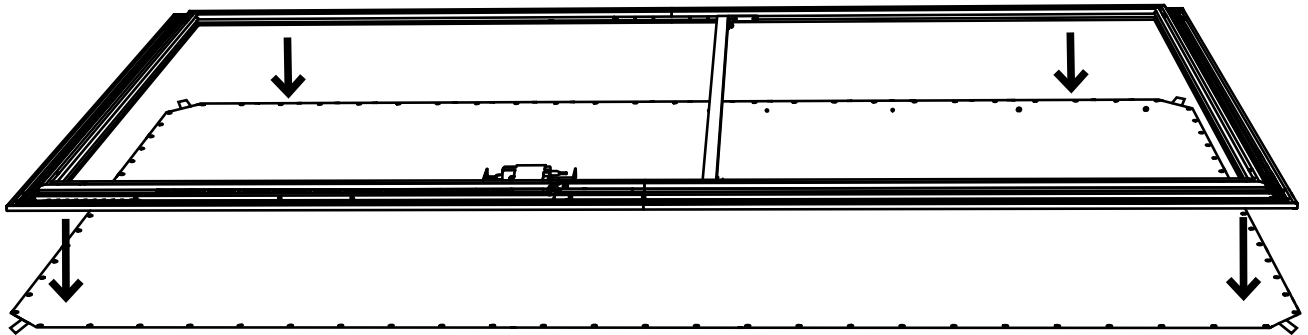
Scan this QR code for the video for this step:

Minute mark 2:49

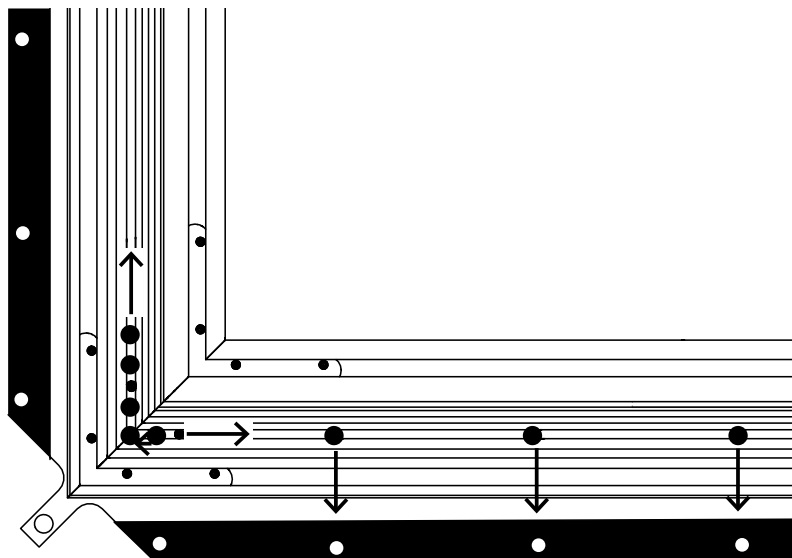
CARBONBLACK MATERIAL ONLY

Note: Wear gloves when handling the material. Carefully unroll the screen material onto a clean floor. Take care to not bend or crease the screen material.

- 1 Carefully lay the frame onto the screen material. Center the frame around the screen material.



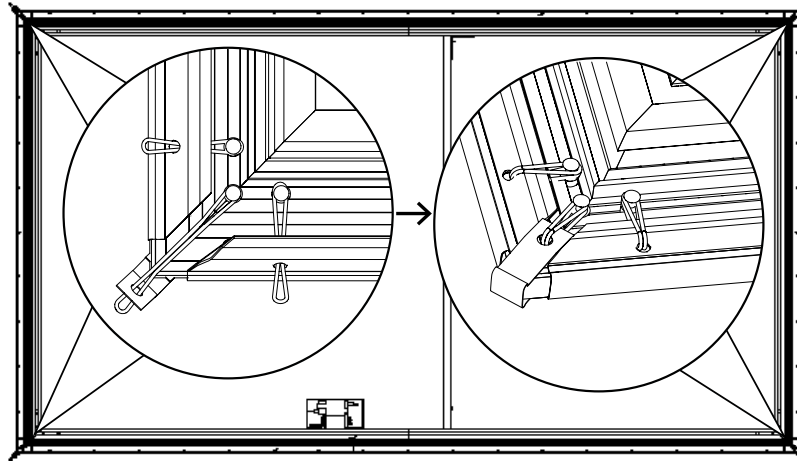
- 2 Remove and discard the black retaining bumpers, then spread out the posts so they align with the holes in the screen material.



CARBONBLACK MATERIAL ONLY

Note: This attachment method is for CarbonBlack material only.

- 3 Make sure the screen material is centered around the frame before proceeding. Refer to the attachment sequence image on page 11.
Pull one end of the bungee through the hole in the material and place around the post while holding the other end. Pull the other end over the post. Repeat for all four corners.



CARBONBLACK MATERIAL FLATTENING

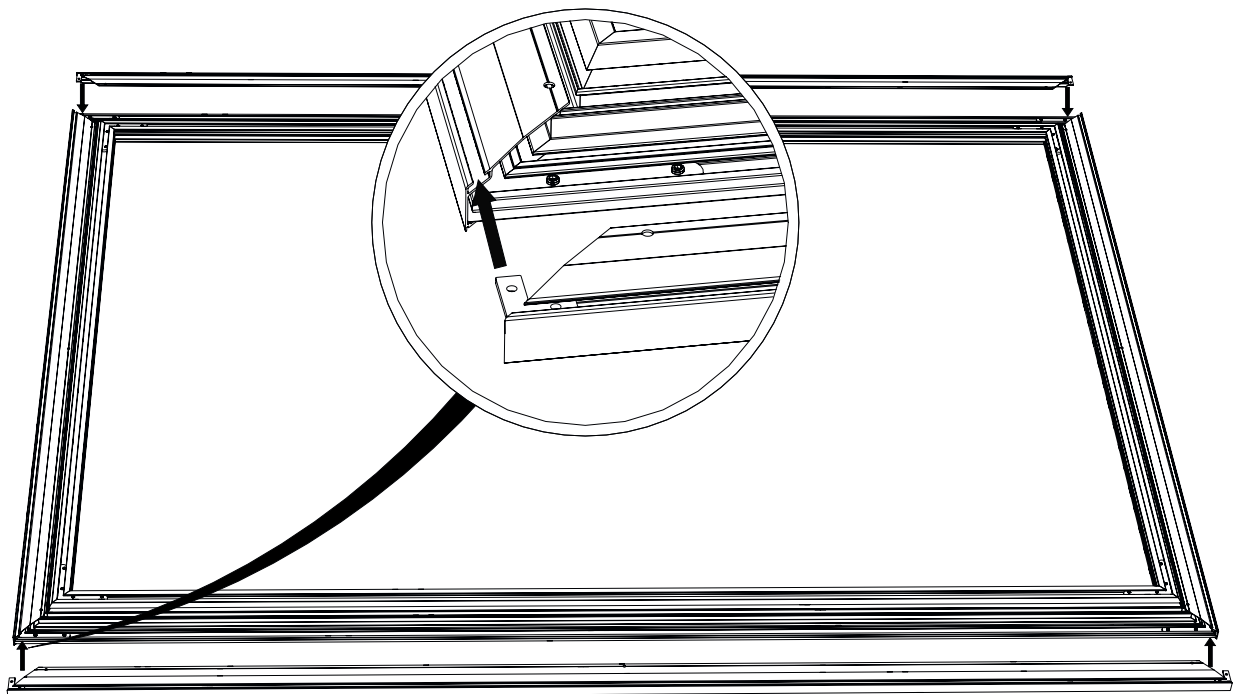
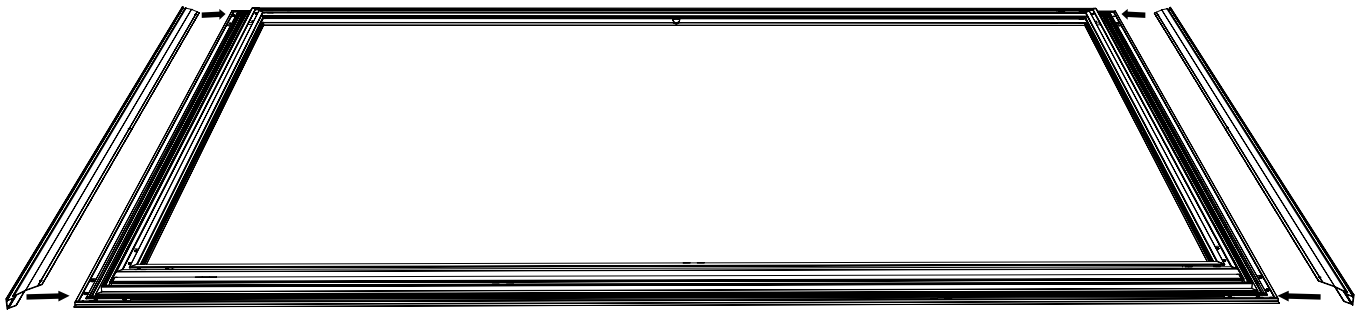
Edge wrinkles may be present after attachment but are easy to resolve. To flatten the **CarbonBlack** material, follow this procedure:

NOTE: This attachment method is for CarbonBlack material only.

- 1 Detach the bungees from the vertical/horizontal posts beside the wrinkles.
- 2 Start from the middle post of the vertical/horizontal frame and pull outward, gripping the material tightly along the rod until all wrinkles are gone.
- 3 Correct all sides from the middle working out to the corners.
- 4 Reattach bungees to secure the material once it is flattened.

STANDARD ZERO EDGE TRIM ATTACHMENT

- 1 Attach the vertical trim first onto the screen as shown below.

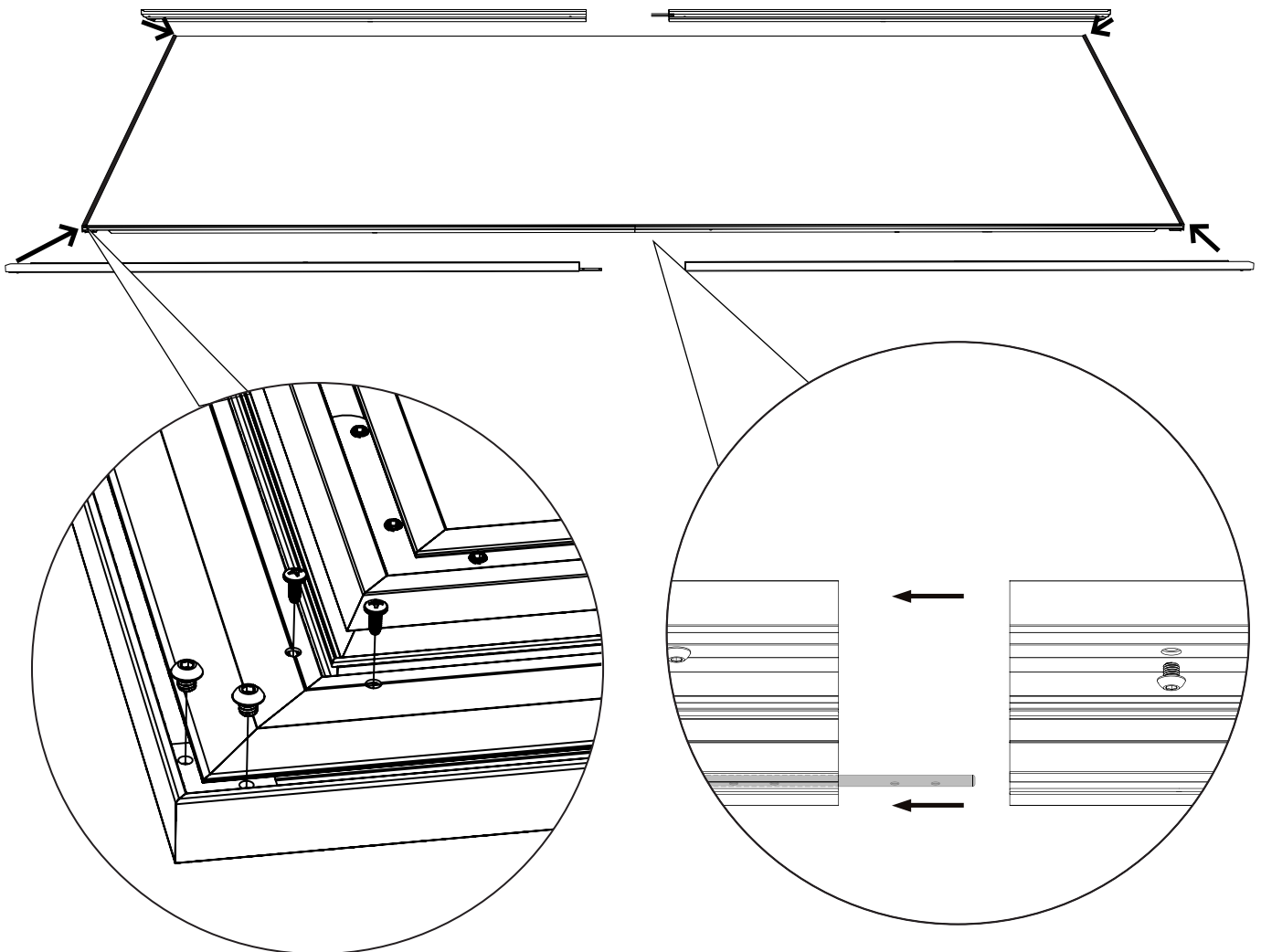


STANDARD ZERO EDGE TRIM ATTACHMENT

2

Set the horizontal trim with corner brackets; square the corners and tighten corner brackets. Fasten the screw to the frame channel. Align the holes in the channel and install screws.

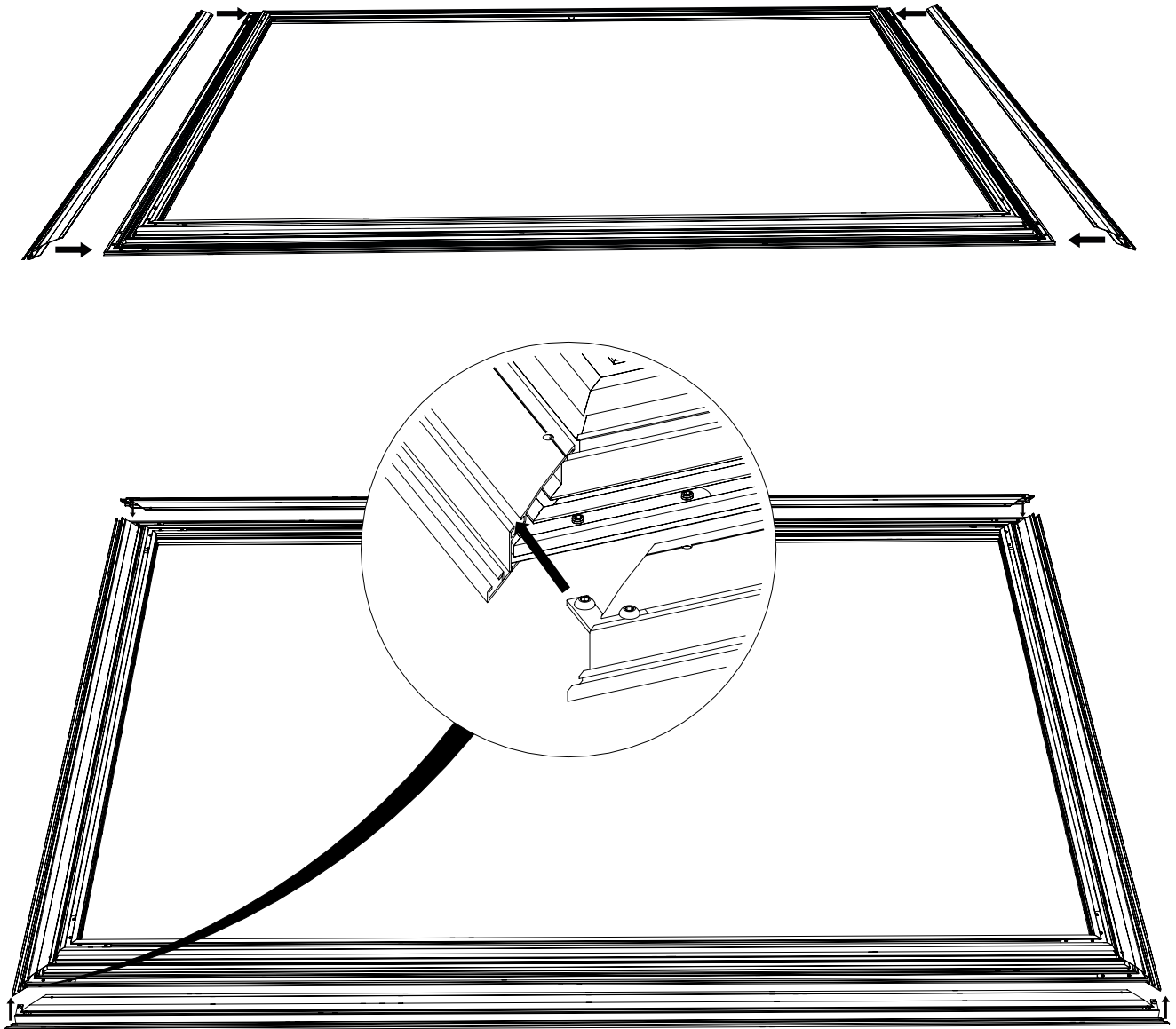
Split Frame Only: Connect the horizontals at the middle by installing quantity 4 $\frac{1}{4}$ "-20 x $\frac{1}{4}$ " screws trough the trim into the splice bar.



Split Frame Only

FIXED 2 TRIM ATTACHMENT

- 1 Attach the vertical trim onto the screen as seen below.

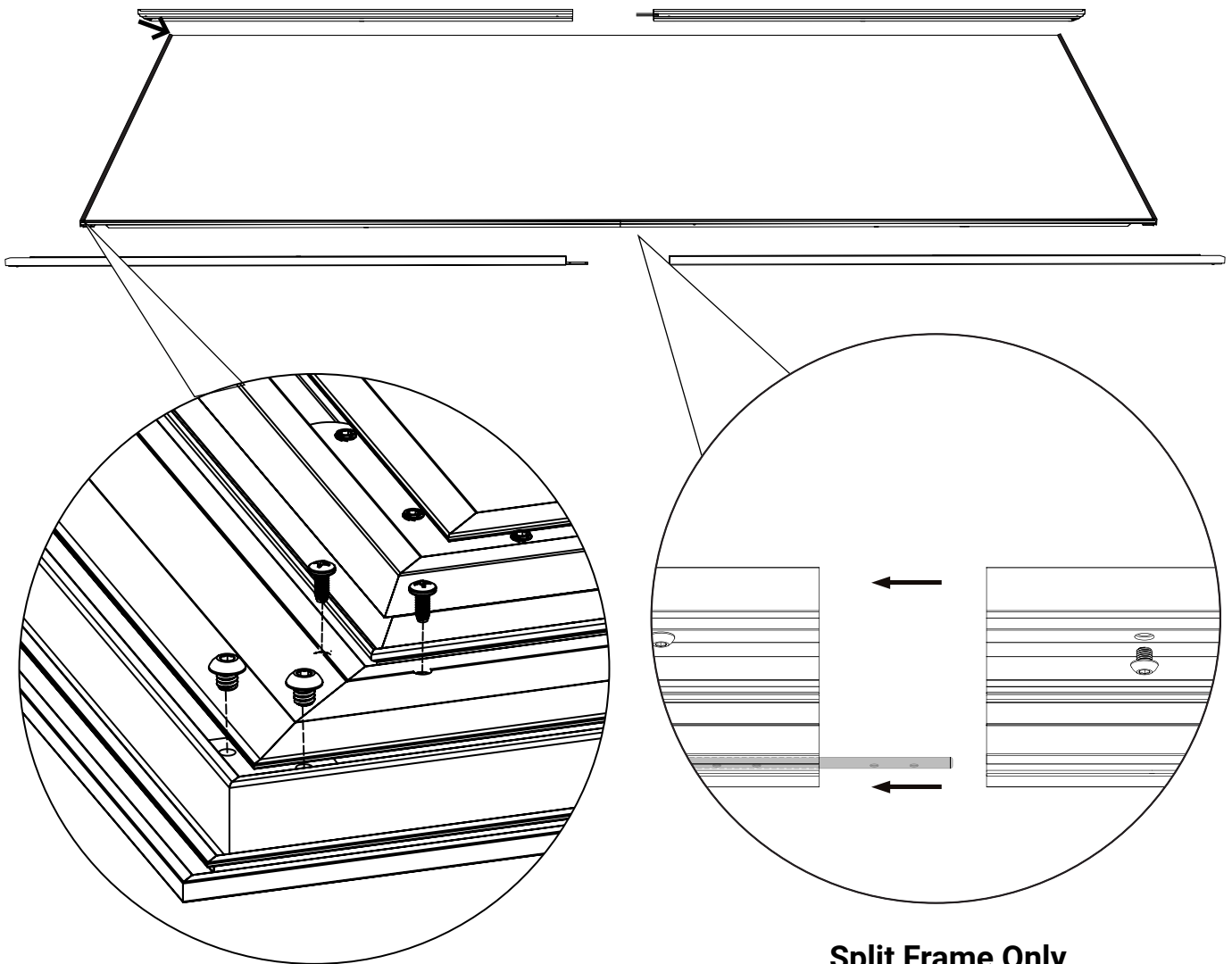


FIXED 2 TRIM ATTACHMENT

2

Set the horizontal trim with corner brackets; square the corners and tighten corner brackets. Fasten the screw to the frame channel. Align the holes in the channel and install screws.

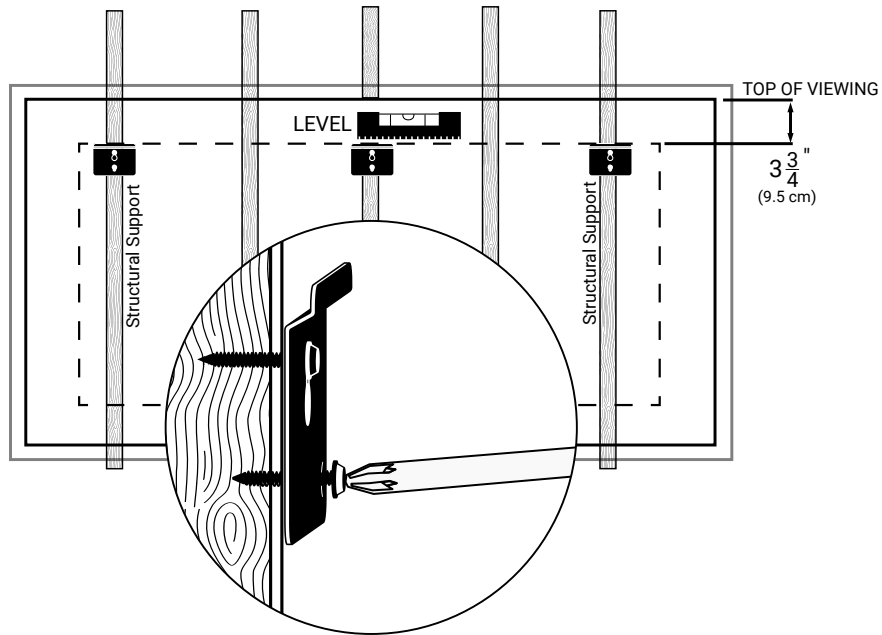
Split Frame Only: Connect the horizontals at the middle by installing quantity 4 $\frac{1}{4}$ -20 x $\frac{1}{4}$ " screws through the trim into the splice bar.



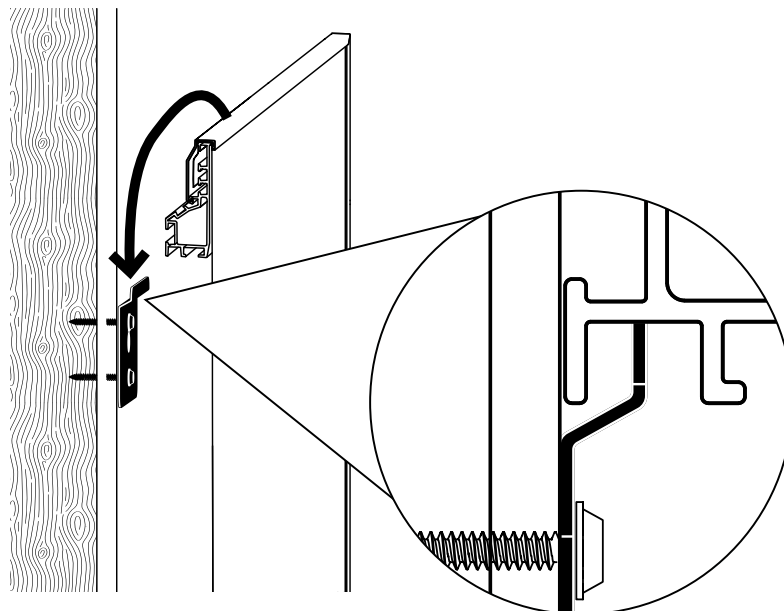
WALL MOUNTING

- 1 Install brackets into the wall structure, at least 6" from the edge of the screen and up to $\frac{1}{3}$ the width of the screen.

Note: Drill the holes to a firm stud; use a stud finder to locate the studs.



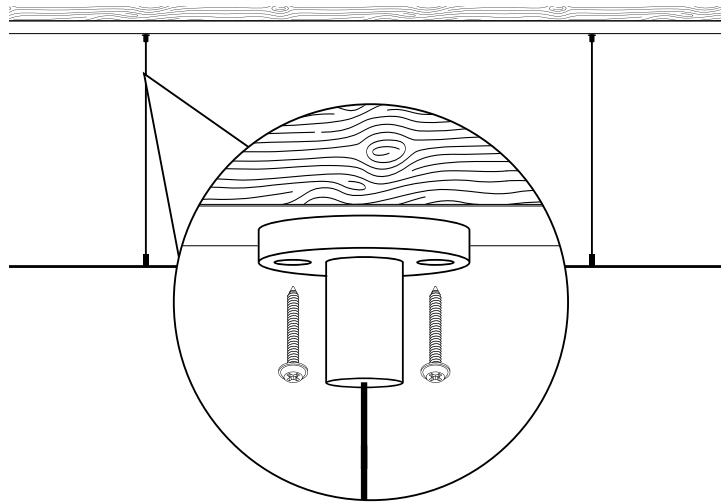
- 2 Use two or more people to carefully lift the screen up and latch onto the brackets.



FLOWN MOUNTING

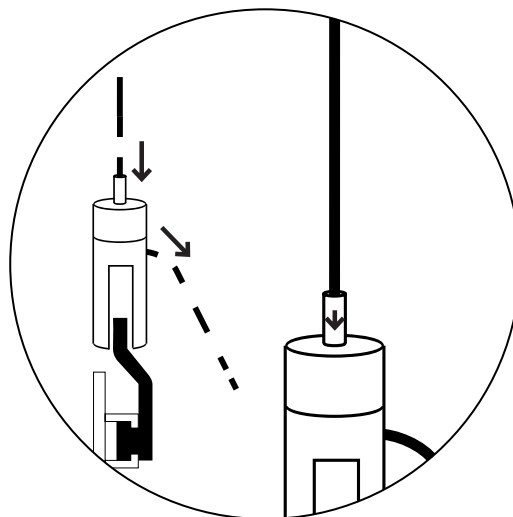
- 1 Install brackets into wall structure at least 6" from the edge of the screen, up to $\frac{1}{3}$ the width of the screen. Screw in through the flown brackets provided, as shown in the image below.

Note: Make sure to drill the holes into a beam that can support the weight of the screen.



Note: If pulled too far, the screen can be lowered by pushing down on the top of the flying mount.

- 2 For future adjustability, do not cut the cables. Simply tape the extra cable to the back of the screen frame.



IR LIGHTING HEX CODES



Scan this QR code to use for different remote control

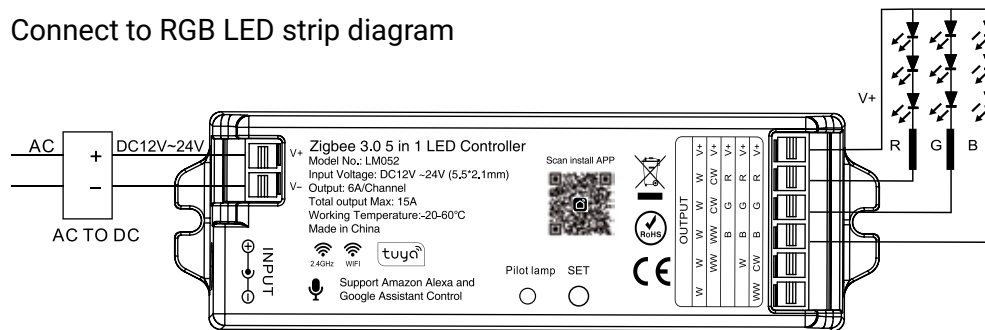
IP (ZIGBEE) CONTROLLED LIGHTING SETUP

CONNECT TO LED STRIP

Controller input voltage must be in accordance with the required voltage of LED strips.

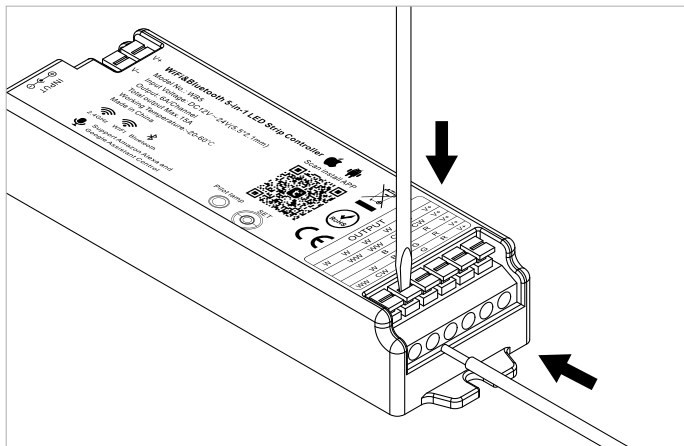
Input voltage = Output Voltage

Connect to RGB LED strip diagram



MOUNTING

Free screw when connecting to LED strip



Controller can not
use in humid area



Made in China



≥0.39 in / 10mm

ZIGBEE 3.0 APP CONTROL INSTRUCTION

Scan this QR code refer to page 2, to get more details.



NOTES

-
1. _____
2. _____
3. _____
4. _____
5. _____
6. _____
7. _____
8. _____
9. _____
10. _____
11. _____
12. _____
13. _____
14. _____
15. _____
16. _____
17. _____
18. _____



Screen Innovations

9715-B Burnet Rd, Suite 400 Austin, TX 78758

512.832.6939

www.screeninnovations.com