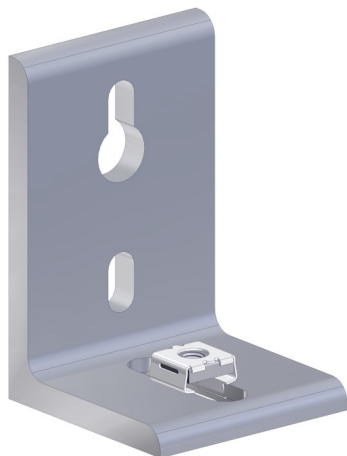


Black Diamond Tiles™ Boxes
(set aside for final assembly)

Frame Boxes—labeled “Open First”
(contain frame sections and red hardware box)

Red Hardware Box Contents

Lower Mounting Brackets



Upper Mounting Brackets



Frame Screws
(Shown actual size)



Upper Mounting Bracket Frame Screws
(Shown actual size)



Mounting Bracket Screws and Washers



#2 Robertson Driver Bit



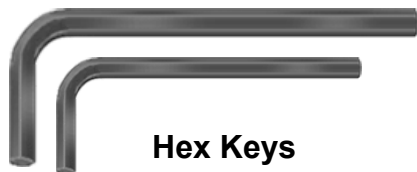
Lower Mounting Bracket Screws
(Attached To Frame)



Trim Mounting Screws
(Shown actual size)



Hex Keys



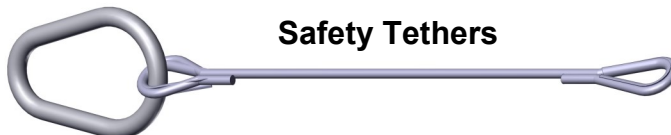
Hex Head Driver Bit



Lifting Eye Bolts



Safety Tethers



Suction Cups



Gloves

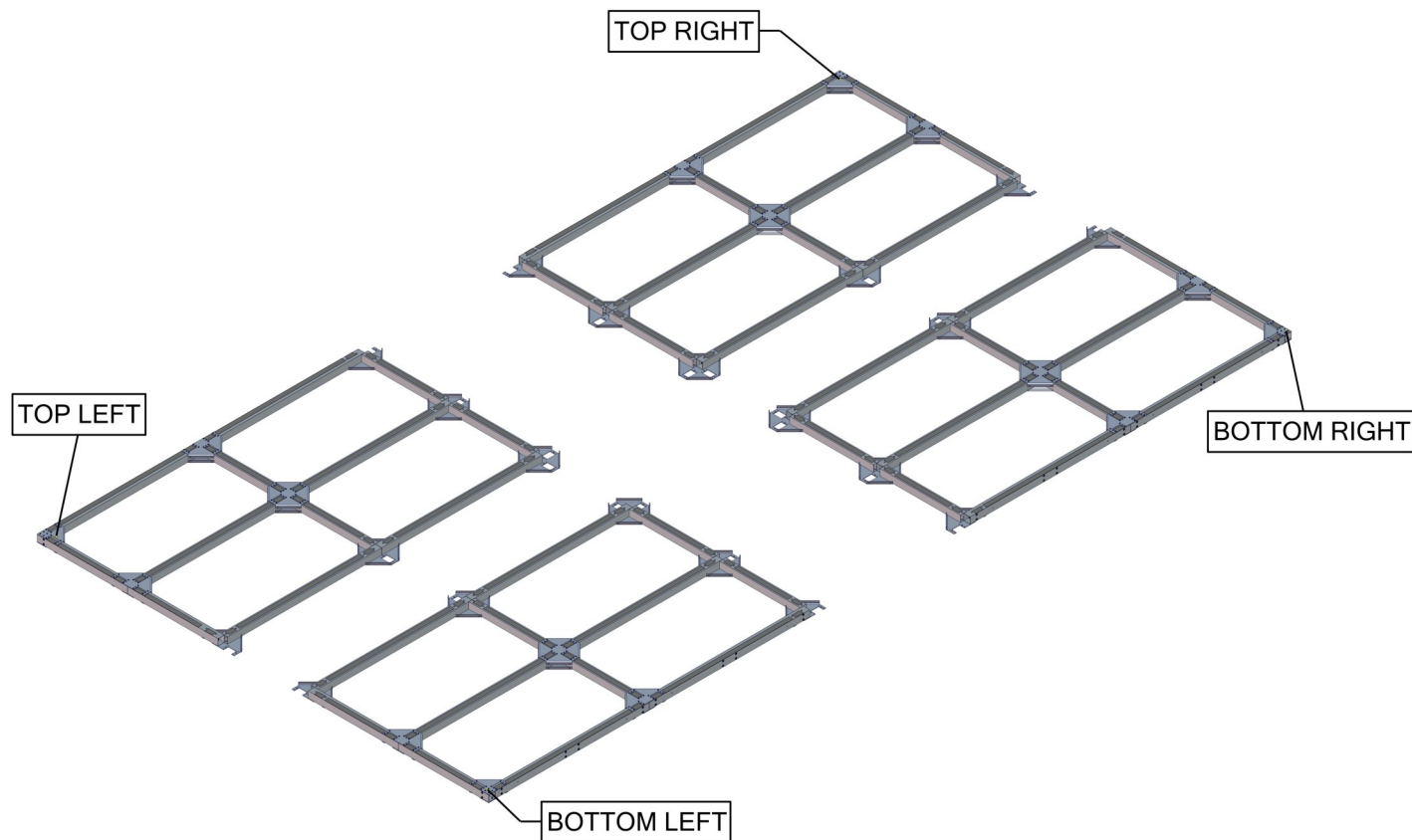


- Read all instructions before installing screen.
- Panel edges and corners are delicate and sharp—handle with care!
- Always securely install supplied safety tethers.

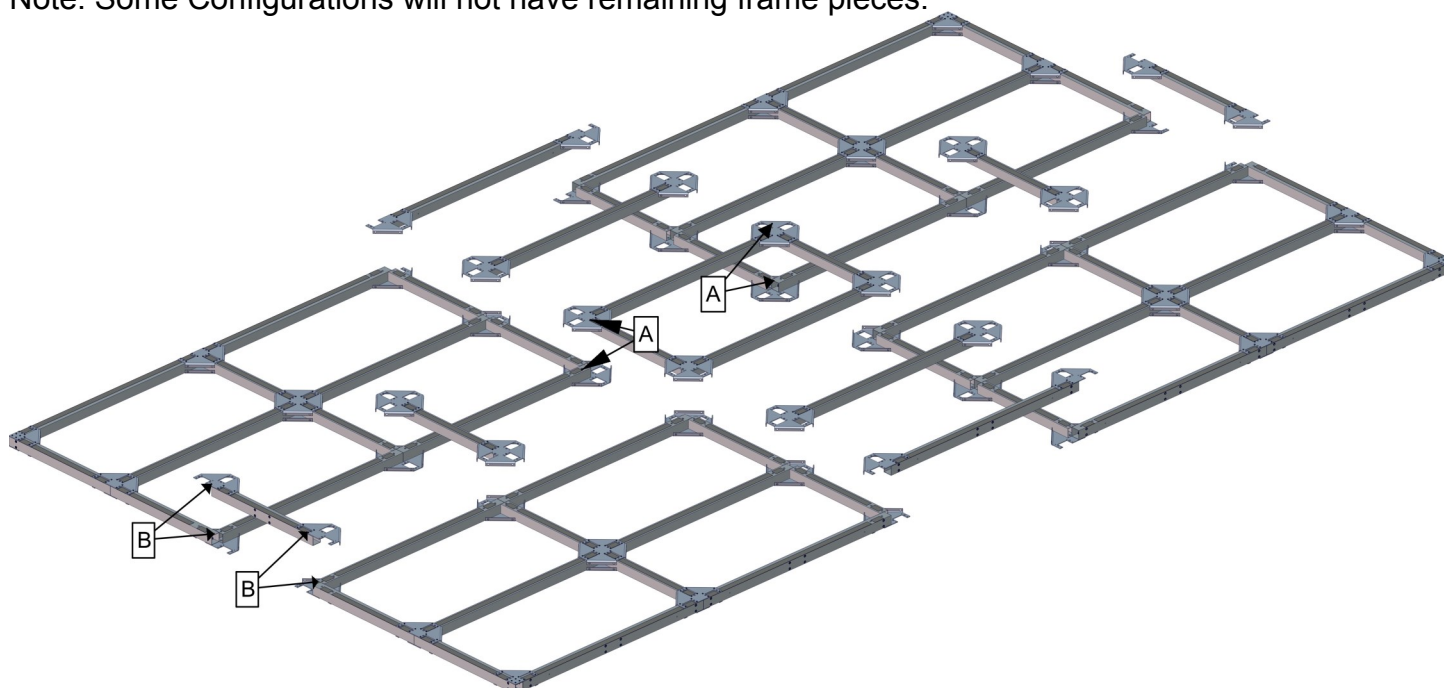
(5 x 5 configuration shown in examples)

Assembling the Frame

1) Unpack the “Open First” frame box and lay the frame sections on the floor as shown below. Make sure that the Bottom Left, Bottom Right, etc. labels are facing up.

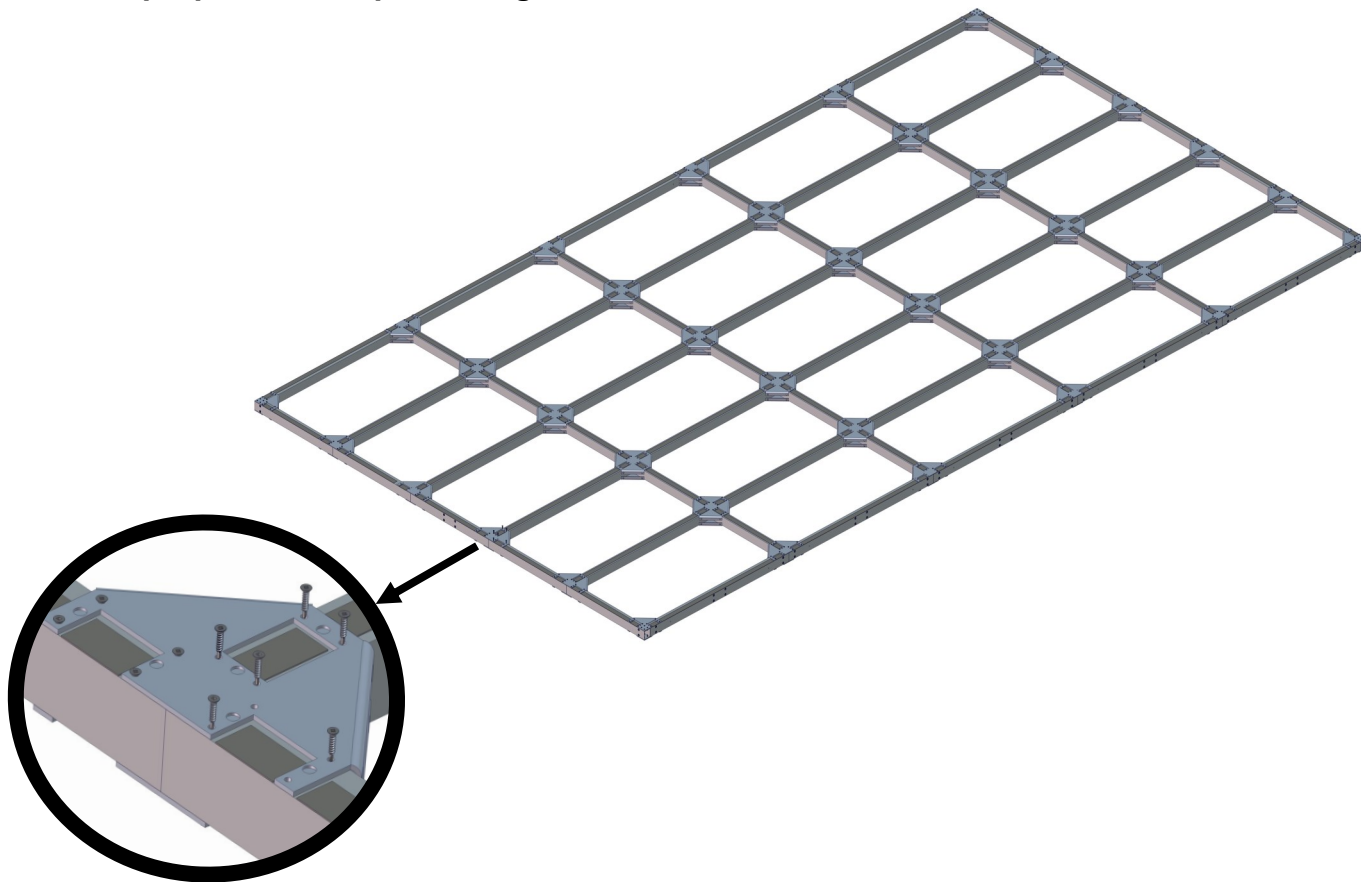


2) Next, place the remaining pieces in between the sections as shown below, matching all labeled parts. Note: Some Configurations will not have remaining frame pieces.

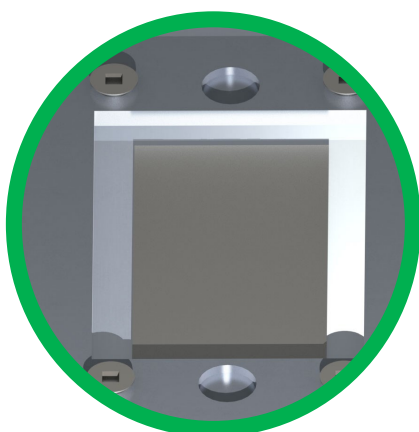


(5 x 5 configuration shown in examples)

- 3) Slide the parts together making sure the round alignment indentions seat into the holes in the frame sections. Screw the parts together in the predrilled holes using the supplied Frame Screws.
- **Do not apply more than 24 in. lbs. of torque to the screws or they will strip out. (For example, set a Milwaukee cordless drill to setting not higher than 12.) Refer to your manufacturer for the proper drill torque setting.**



- **Make sure that the indentions on the mounting brackets go into the holes in the square tubes. If a dent appears in the frame while you're tightening the screws, the indentions are probably not aligned in the holes. Loosen the screws and try again. You may need to push the pieces to the correct position while at the same time tightening the screws.**



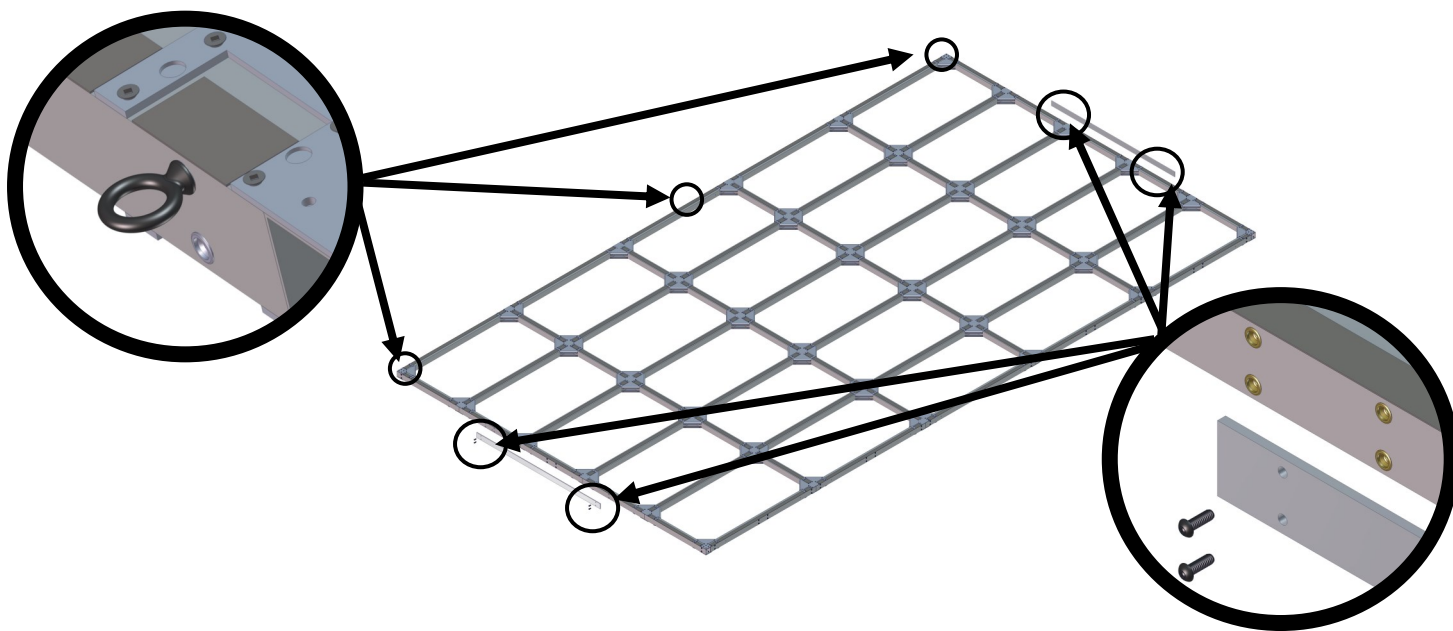
YES



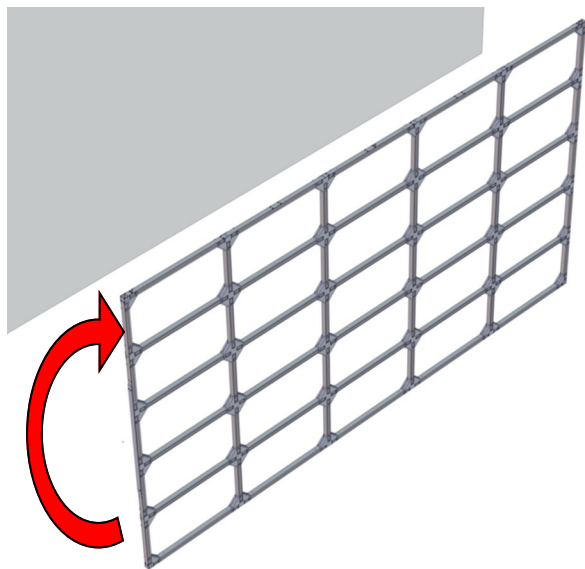
NO

(5 x 5 configuration shown in examples)

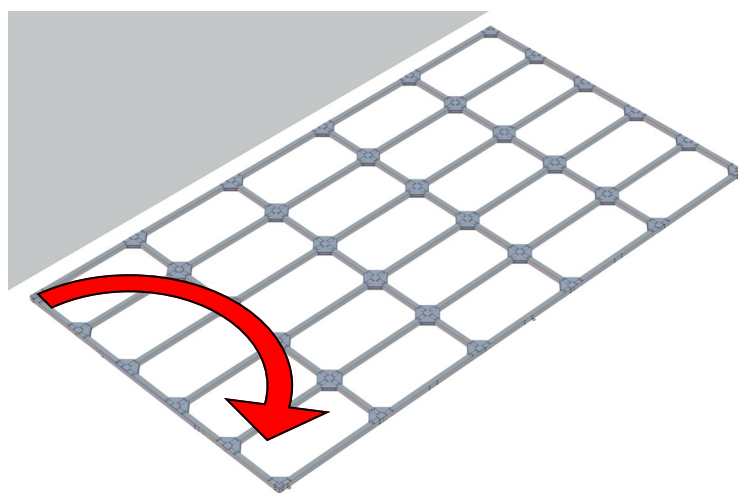
4) Install 3 eye bolts evenly spaced into the tapped holes in the top of the frame. Also Install the temporary lifting braces with the trim mounting screws (not required for 4x4 or smaller frame).



5) Carefully lift the frame upright by attaching to the eye bolts. Support the middle of the frame as you are raising to prevent it from bending under it's own weight. Once upright, lay it flat on the floor on its opposite side—the front of the frame will now be face down on the floor.



Lift using cables or rope attached to the 3 eye bolts.



6) Continue to flip the frame over on it's other side. **Repeat Step 3 (from previous page)** only this time installing screws on the back of the frame.

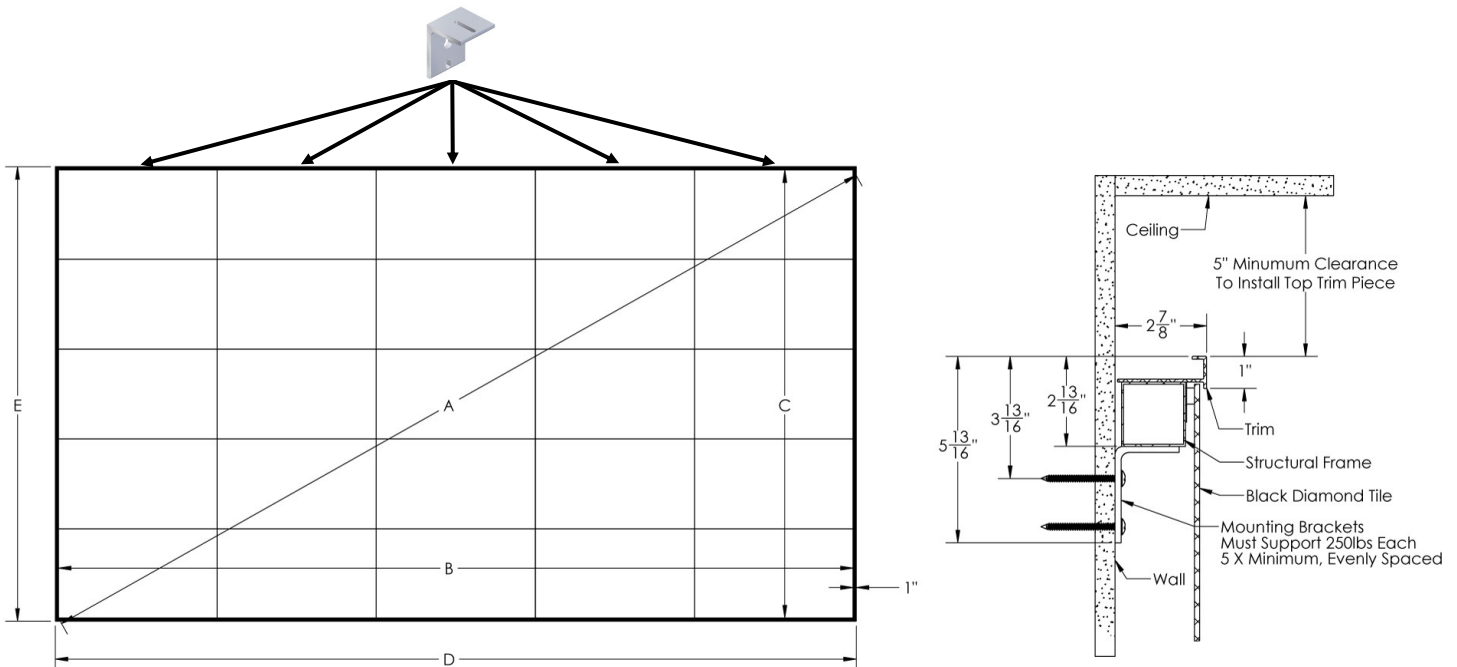
7) Remove the temporary lifting braces from the frame. (Not required for 4x4 frame)

Mounting the Frame on the wall

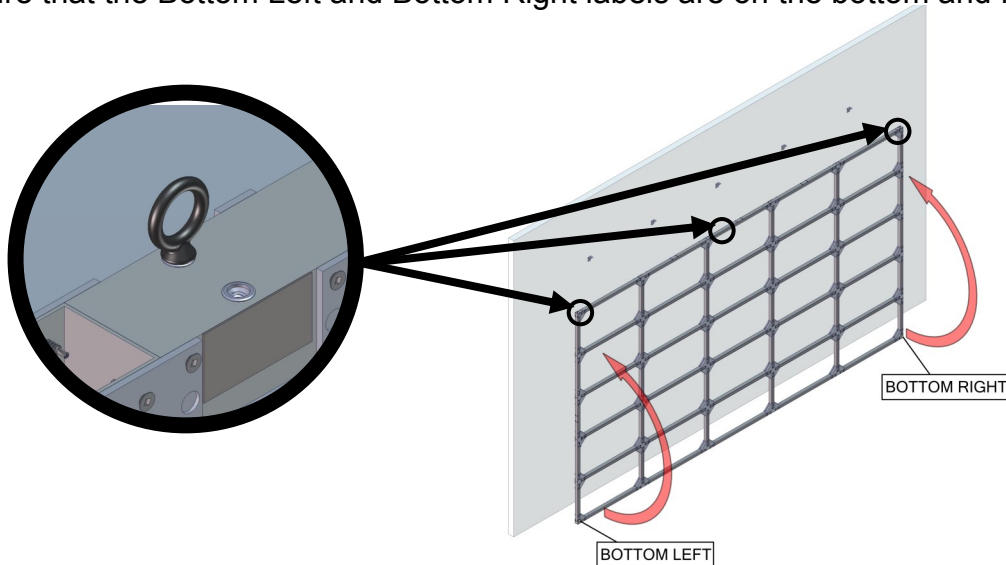
8) Select screws that will support at least 250 lbs. Position the upper mounting brackets on the wall at locations where there is structural support. Each bracket may be moved left or right—just make sure to hit structural support and install one bracket between each pair of vertical frame ribs. When using the keyhole slots in the mounting bracket, place the screws $2\frac{3}{4}$ " down from the top of the viewing area.

- Each mounting bracket must support a minimum of 250 lbs.
- Make sure that they are mounted along a straight and level line.
- Space each bracket so that they will be about in the middle of each frame section.

Upper Mounting Bracket Locations

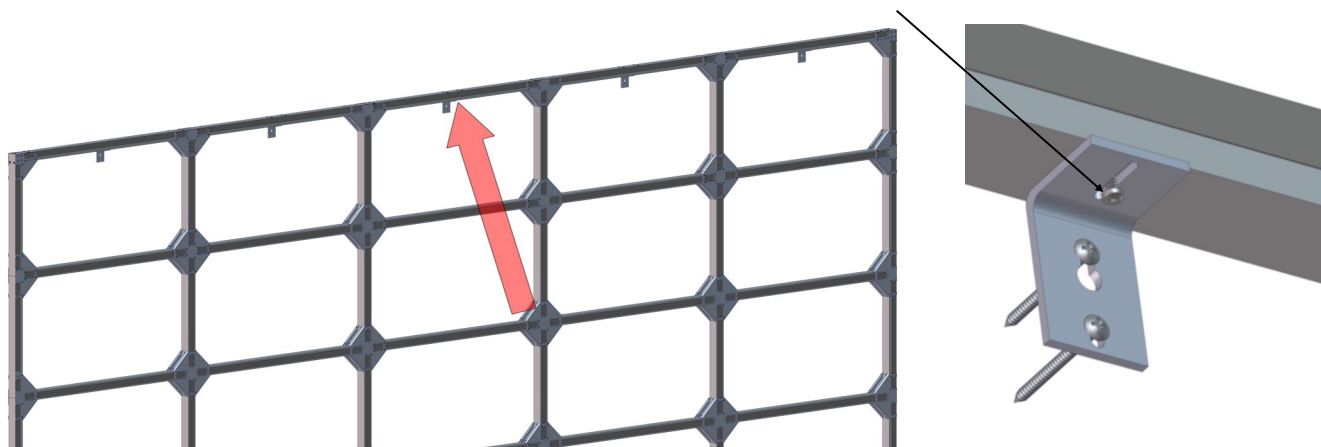


9) Using the eye bolts in the top of the frame, carefully lift the frame upright and guide it toward the wall. Make sure that the Bottom Left and Bottom Right labels are on the bottom and facing away from the wall.



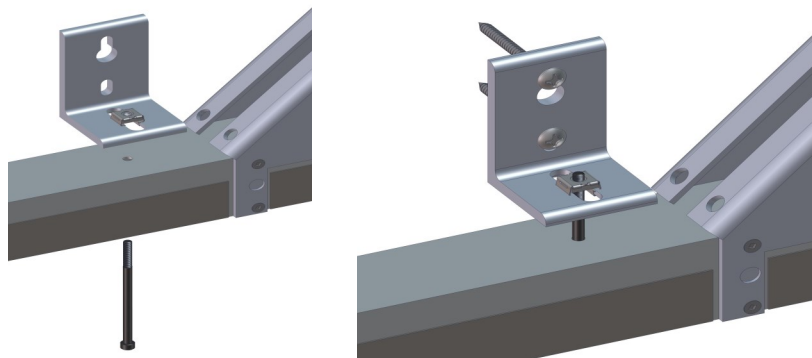
(5 x 5 configuration shown in examples)

10) Use the eye bolts to lift the frame up and rest it on the top of the wall brackets. Secure the frame to each bracket with the self drilling upper mounting bracket screws.

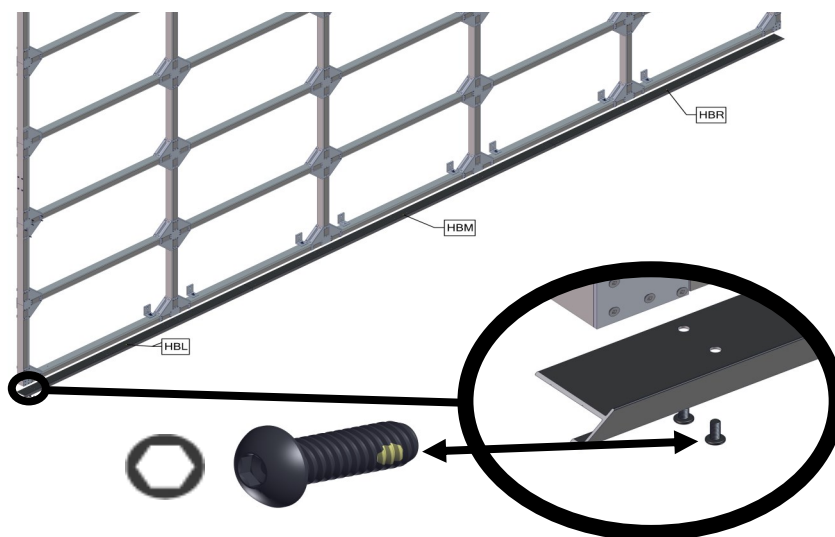


11) Put the long lower bracket screw through the small hole in the bottom frame pieces. Thread into the nut included on the lower mounting bracket. Secure to the wall while holding the bracket about an inch off the top of the lower frame piece.

12) Tighten the screws until they make contact with the bottom of the frame, then secure them by turning one additional full turn.



13) Attach the 2 to 3 bottom trim pieces (labeled HBL, HBM, and HBR) with the black Trim Mounting Screws (There will not be an HBM piece for the 4x4 configuration.). Note that slits have been cut in the black velvet covering where there are holes.



(5 x 5 configuration shown in examples)

14) Clip the safety tethers in to the holes located in the frame brackets. Repeat this until 2 safety tethers for every panel are installed on the frame.

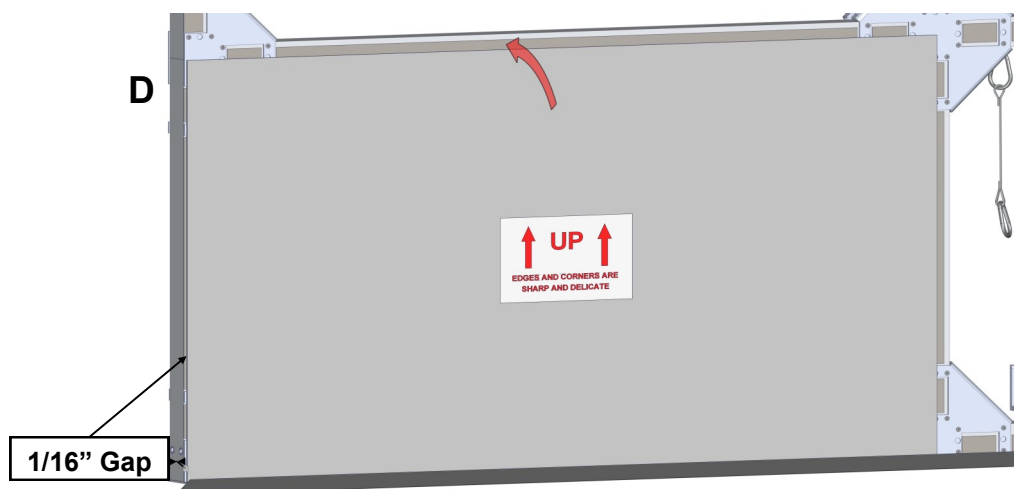
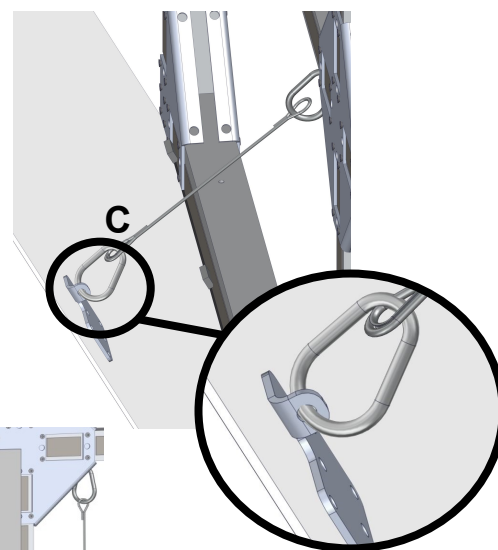
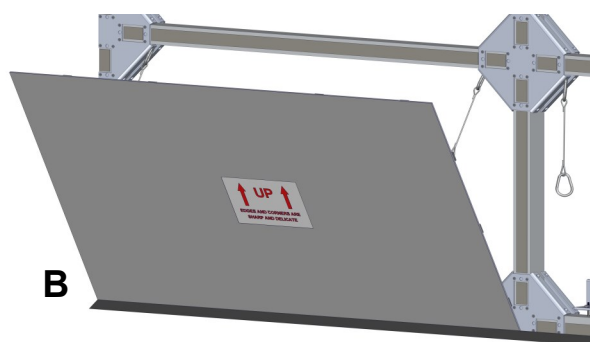


Panel Handling Notes:

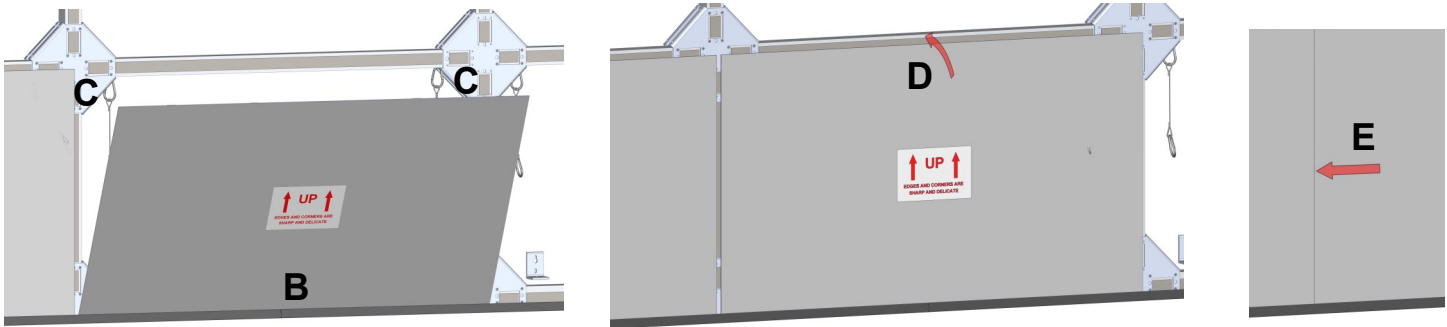
- Be careful handling panels; edges and corners are delicate and sharp.
- Do not remove the panels from the box until you are ready to install them on the frame.
- The suction cups that were provided can be used to easily position the panels on the frame.
 - To make adjustments to panel positions; apply the suction cup to the panel to give you a place to grab when moving the panel.
- Suction cups can also be used to remove panels if they need to be replaced in the future.

Placing the Panels on the Frame

- 15)
- Remove the corner protectors from the panel—be careful handling panels—edges are sharp!
 - Starting at bottom left and with the label arrows facing up, place the first panel by resting it on the bottom black trim frame.
 - Clip both safety tethers to the brackets on the back of the panel.
 - Push the top of the panel towards the frame allowing all the panel to snap against the frame.
 - Make sure the left edge of the panel is about 1/16" inset from the edge of the frame.



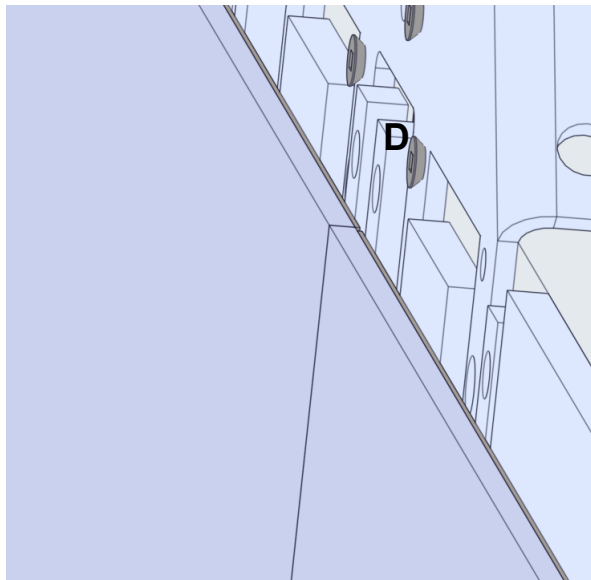
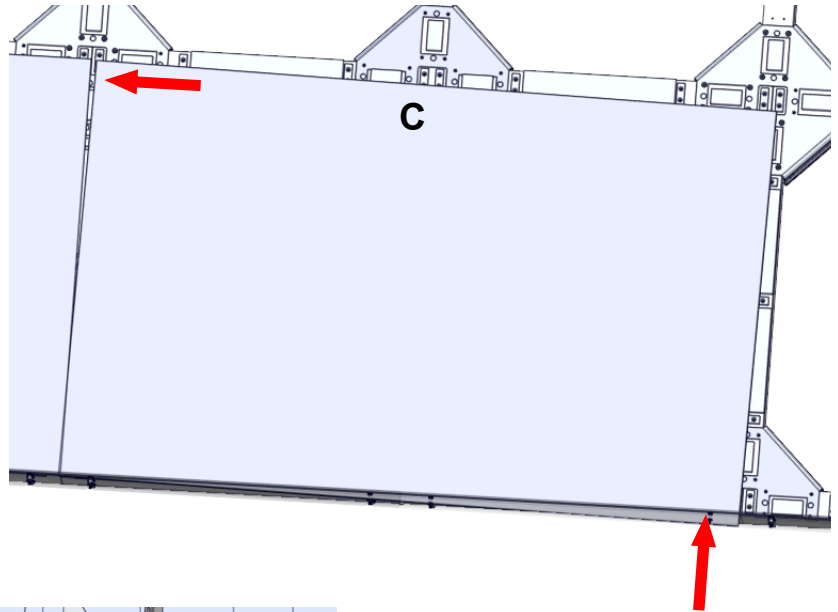
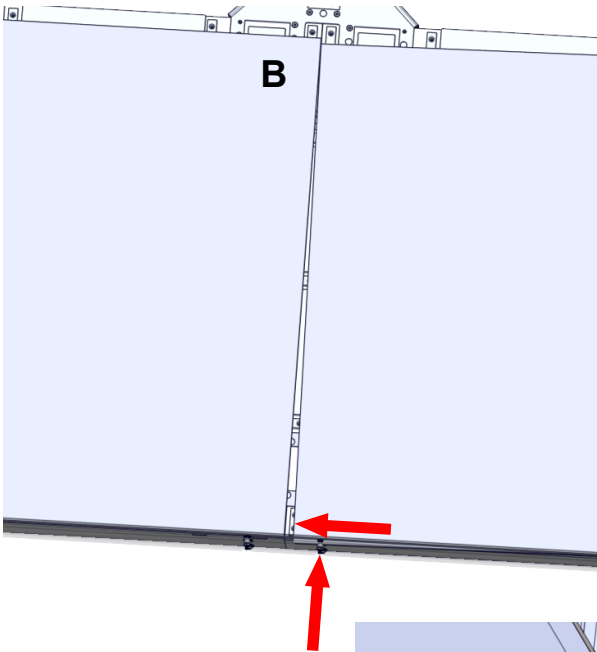
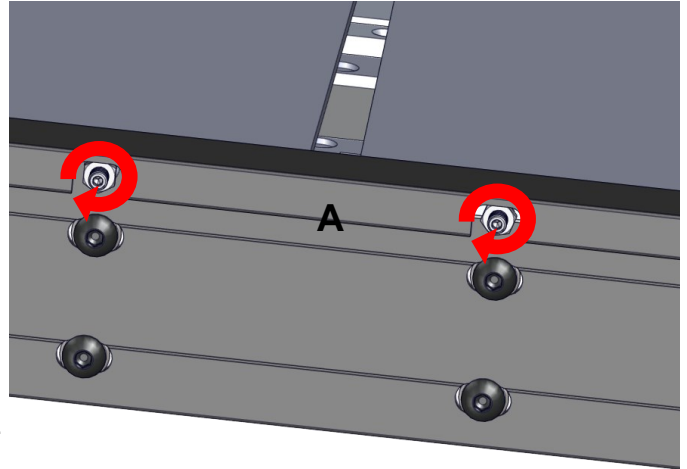
- 16)
- Remove the corner protectors from the panel—be careful, edges are sharp!
 - Place the next panel on the bottom ledge so that it is just to the right of the previous panel. Make sure that the arrows on the label are facing up.
 - Clip both safety tethers to the brackets on the back of the panel.
 - Then bring the top of the panel towards the frame to allow all the magnets to be attracted to the frame. **To prevent damage, do not let panel edges come into contact with adjacent panel.**
 - Slide the panel over to the adjacent panel.



(5 x 5 configuration shown in examples)

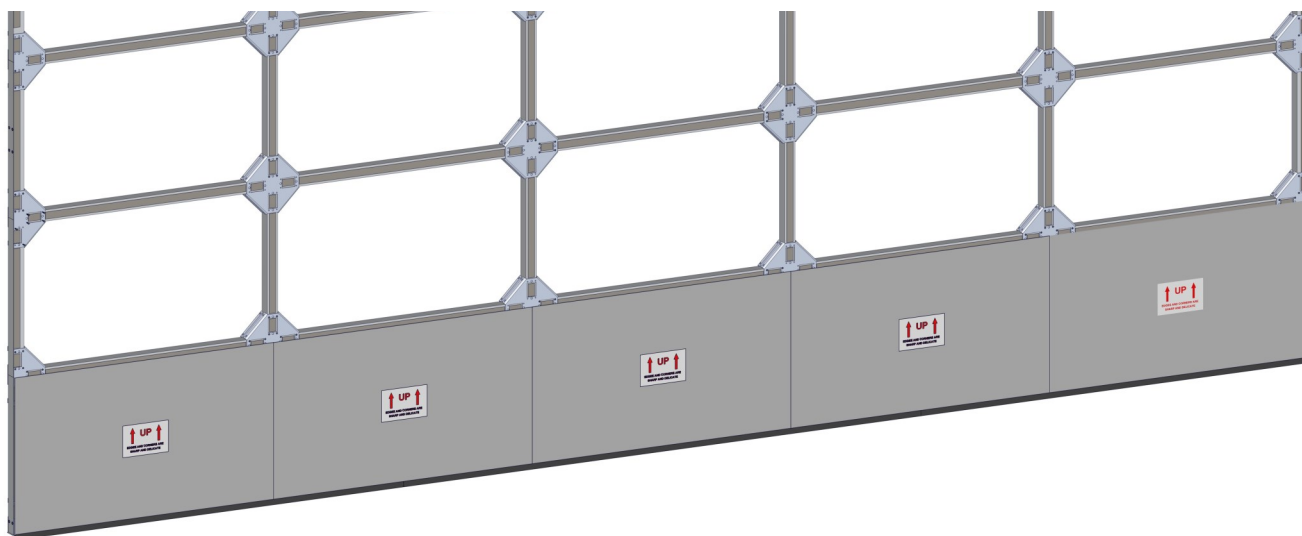
17) Perfecting the panel alignment.

- Loosen the lock nut on the set screw attached to the trim piece directly below the misaligned panel.
- If there is a gap at the bottom then turn the set screw up on the left side of the right panel.
- If there is a gap at the top then turn the set screw up on the right side of the right panel.
- Use the same set screws to adjust the height of the panels so that they are perfectly aligned at the top of the panels.
- Repeat steps A through D until the panels are perfectly aligned. Note that it may take a couple of attempts to get the panels to align perfectly. Also push the panels together after making adjustments if necessary.



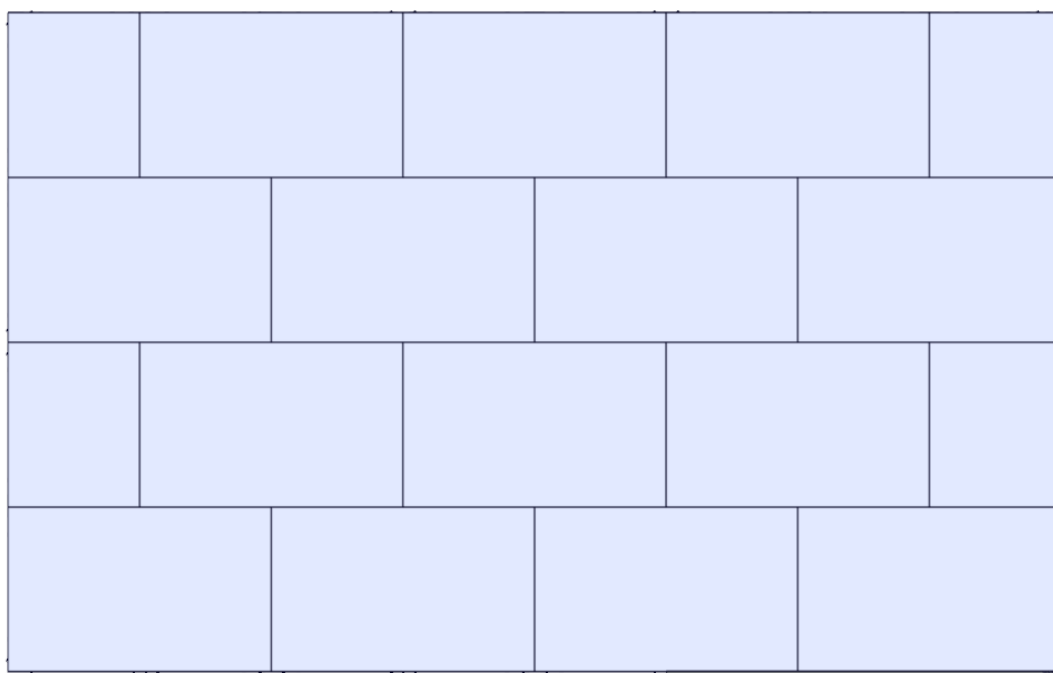
(5 x 5 configuration shown in examples)

18) Continue until the entire bottom row of panels is installed and the top edge of all panels line up evenly across. If they're uneven, you must further adjust the panels (see step 17). Finally lock the nuts on the set screws to prevent the adjustments from changing. Do not place more panels until the top edge of this first row aligns evenly and there are no gaps in the vertical seams.



19) Continue installing the panels following the running bond pattern as shown below, one row at a time until all panels have been installed(4x4 configuration shown). As a final check:

- A) Make sure all arrows on panels are pointing up.
- B) All safety tethers are clipped in to the back of every panel.



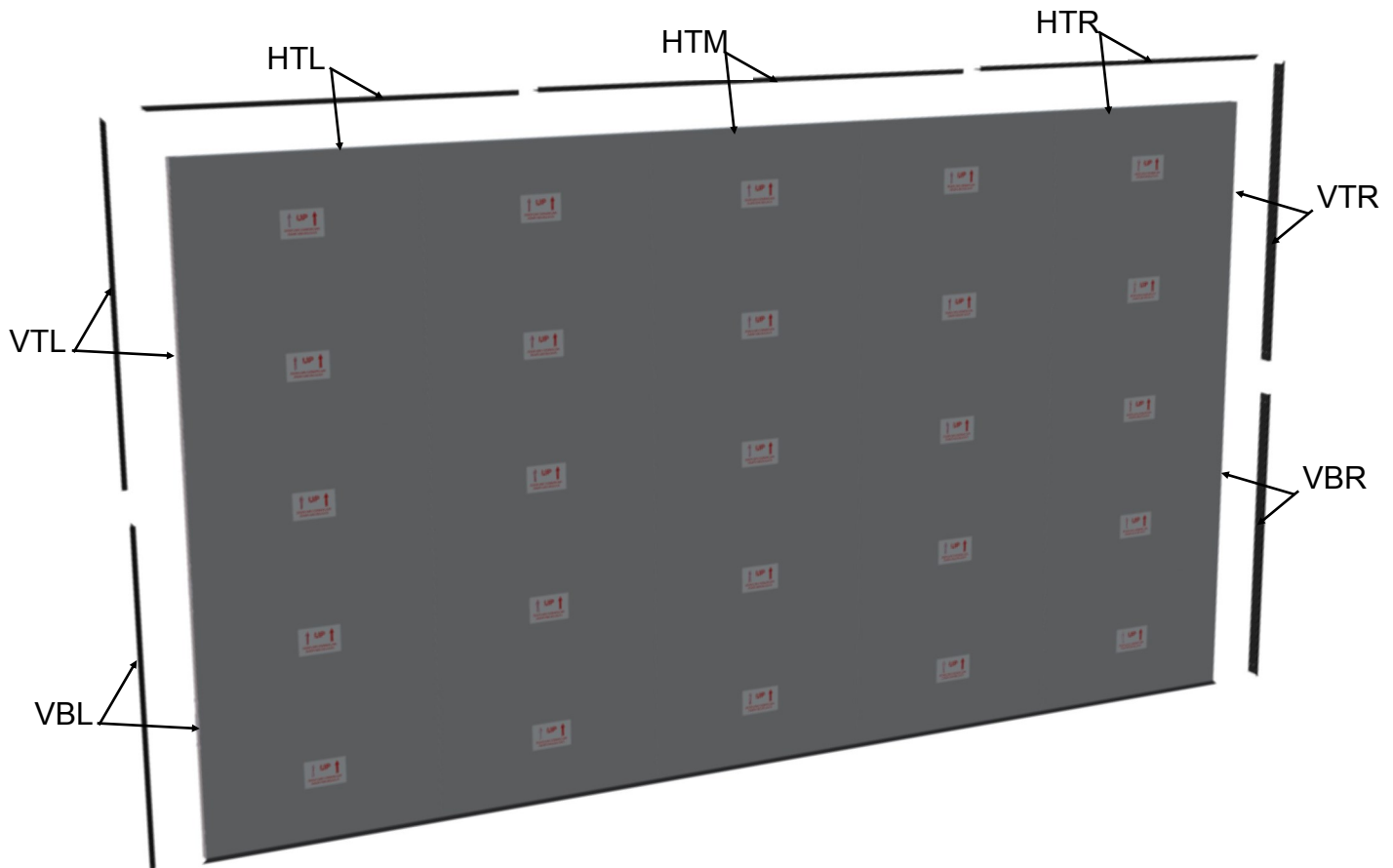
20) Remove the lifting eye bolts from the top of the frame.

Installing the Remaining Trim

21) Install the remaining trim pieces with the Trim Mounting Screws. The trim pieces are labeled with the following key to guide where they are to be mounted on the frame.

Key: (H)orizontal (V)ertical (T)op (B)ottom
(L)eft (M)iddle (R)ight

Example: HTL = Horizontal Top Left



21) Once all trim pieces have been attached and all adjustments have been made remove the pre-mask from each panel. Congratulations—your BD Tiles is complete!

LIMITED ONE YEAR WARRANTY ON SCREEN INNOVATIONS BLACK DIAMOND MOTORIZED PRODUCTS

Screen Innovations warrants its products to the original purchaser only, to be free from defects in materials and workmanship for a period of one (1) year from the date of purchase by the original purchaser provided they are properly operated according to Screen Innovations' instructions and are not damaged due to improper handling or treatment after shipment from the factory.

This warranty does not apply to equipment showing evidence of misuse, abuse or accidental damage, or which has been tampered with or repaired by a person other than authorized Screen Innovations personnel.

Screen Innovations' sole obligation under this warranty shall be to repair or to replace (at Screen Innovations' option) the defective part of the merchandise. Returns for service should be made to your Screen Innovations' dealer. If it is necessary for the dealer to return the screen or part to Screen Innovations, transportation expenses to and from Screen Innovations are payable by the purchaser and Screen Innovations is not responsible for damage in shipment. To protect yourself against damage or loss in transit, insure the product and prepay all transportation expenses.

THIS WARRANTY IS IN LIEU OF ALL OTHER WARRANTIES, EXPRESS OR IMPLIED, INCLUDING WARRANTIES AS TO FITNESS FOR USE AND MERCHANT ABILITY. Any implied warranties of fitness for use, or merchantability, that may be mandated by statute or rule of law are limited to the one (1) year warranty period. This warranty gives you specific legal rights, and you may also have other rights, which vary from state-to-state. **NO LIABILITY IS ASSUMED FOR EXPENSES OR DAMAGES RESULTING FROM INTERRUPTION IN OPERATION OF EQUIPMENT, OR FOR INCIDENTAL, DIRECT, OR CONSEQUENTIAL DAMAGES OF ANY NATURE.**

In the event that there is a defect in materials or workmanship of a Screen Innovations product, you may contact us at 2105 Denton Drive, Austin, TX, 78758-4505 , (512) 832-6939.

IMPORTANT: THIS WARRANTY SHALL NOT BE VALID AND SCREEN INNOVATIONS SHALL NOT BE BOUND BY THIS WARRANTY IF THE PRODUCT IS NOT OPERATED IN ACCORDANCE WITH SCREEN INNOVATIONS' WRITTEN INSTRUCTIONS.

Keep your sales receipt to prove the date of purchase and your original ownership.