

# Adding a Zigbee Drapery Motor



## Initial Considerations

All motors must be fully operational and programmed with limits prior to TaHoma programming.

## Process

1. From the TaHoma app home page, locate and select the “Menu” icon in the lower-right corner.
2. Select “My Products.”



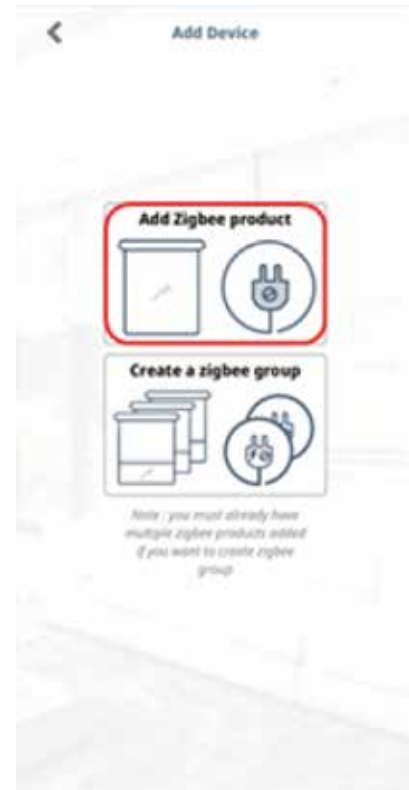
3. Select the plus (+) icon in the top-right corner.



4. Select “Zigbee.”



5. Select "Add Zigbee Product."



6. On the physical motor, remove the bottom cover and scan the QR code.



7. Follow the instructions that populate on-screen.
  - Press and hold the “S” button on the motor for seven (7) seconds until the motor jogs twice.



8. Select “Next” and wait for the device to pair. This process may take up to three (3) minutes.



9. Name the device in the text field; select “Next.” The motor jogs once to confirm its pairing to the TaHoma.

