

#43109

# Smart Light Switch

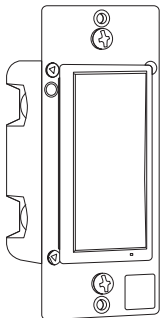
## Installation Instructions



INSTALLERS: Please leave this manual with the owner.

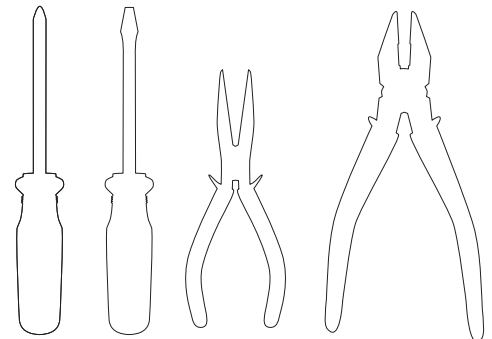
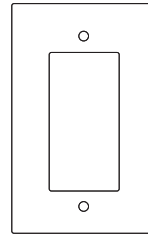


## Parts in the Box



Smart Light Switch (Trim plate not included), Screws (2), Paddles (2), Installation Instructions .

## Additional Tools and Parts needed.

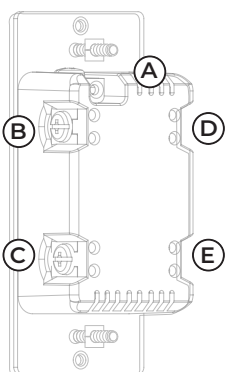


**Note:** Smart Light Switch is an AC device and the following instructions are intended for licensed electricians only.

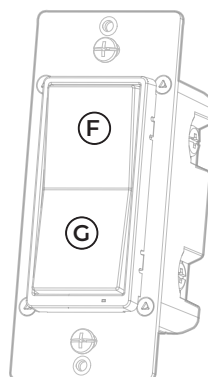
**Note:** The fixture controlled by the Zigbee In-Wall Smart Switch must not exceed 960W incandescent, 1800W (15A) resistive or 1/2HP motor. The switch is designed only for use with permanently installed fixtures.

## Getting to know your new Zigbee device

1. Turn ON/OFF manually or remotely via the Zigbee controller
2. Can be included in multiple groups and scenes
3. May be used in single-pole installation or with up to four add-on switches in multi-switch wiring configurations
4. Compatible with all LED/CFL and incandescent bulbs
5. Auto line/load detection
6. Interchangeable paddle switch — white & light almond paddle in package
7. Uses a standard, decorative-size wallplate for single-gang installations (wallplate not included)
8. Reversible blue LED acts as a guide light or status indicator
9. Zigbee certified for simple pairing and integrated home automation
10. Screw terminal installation — requires wiring connections for line (hot), load, neutral and ground. Traveler wire required for 3-way or 4-way installation



- A. Ground (Green/Bare)
- B. Line or Load (Black)
- C. Line or Load (Black)
- D. Traveler (Red/Other)
- E. Neutral (White)



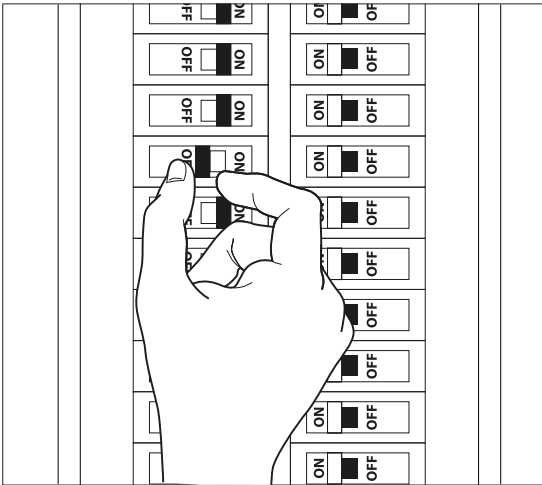
- F. Top rocker—press to turn on
- G. Bottom rocker—press to turn off

**Note:** Turn OFF the power to the branch circuit for the outlet at the service panel. All wiring connections must be made with the POWER OFF to avoid personal injury and/or damage to the outlet.

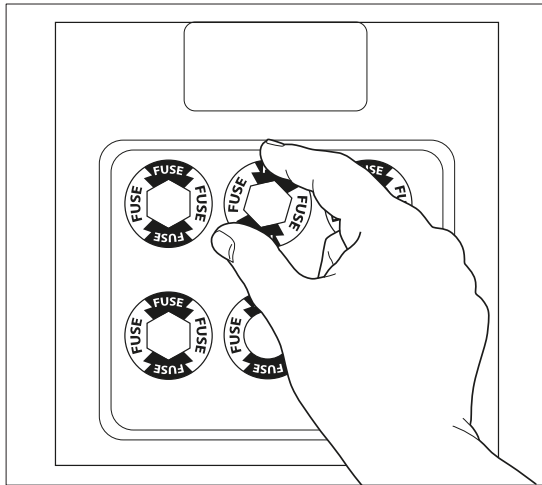
**Note:** Smart Light Switch is an AC device and the following instructions are intended for licensed electricians only.

## Wiring Installation instructions

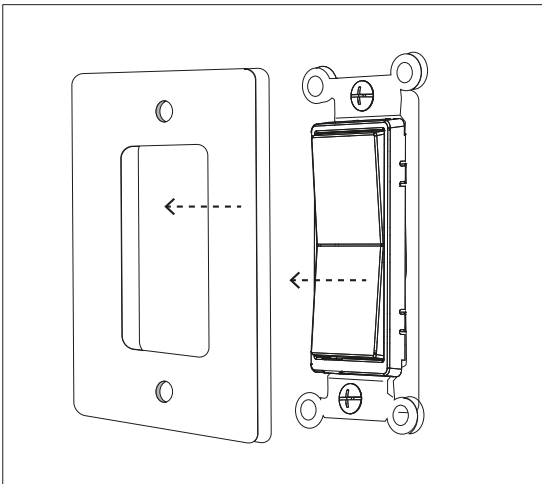
1. Shut off power to the circuit at circuit breaker or fuse box. **IMPORTANT! Verify power is OFF to switch box before continuing.**



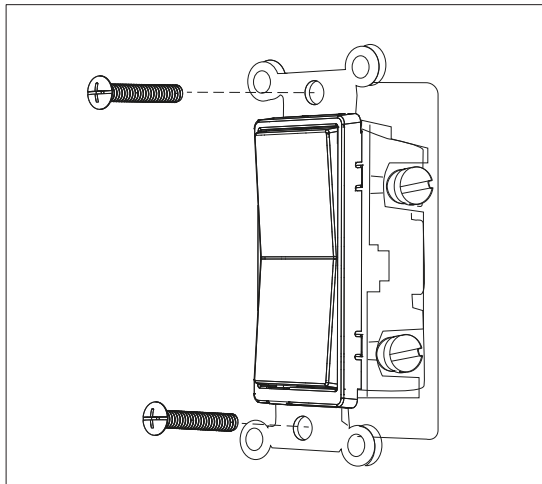
OR



2. Remove the wall plate.



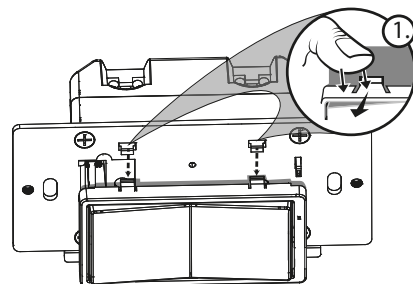
3. Remove the outlet mounting screws.



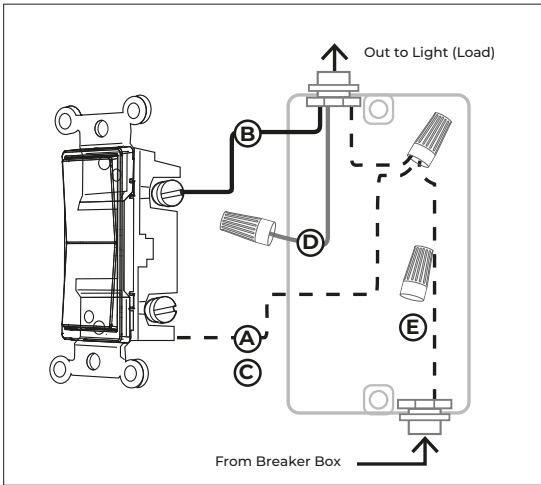
## Changing paddle color (Optional step)

Before installation, you may want to change the color of the paddle to match your wallplate or décor.

1. Push side tabs in on one side and then the other to release paddle. Lift the cover up and off.
2. Simply put the new paddle onto the switch by inserting the side tabs and snapping securely into place. Once this step is complete, return to section 3.

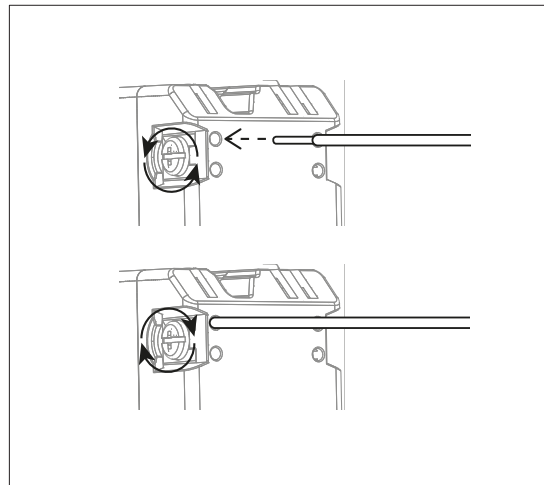


4. Disconnect the wires from the existing outlet. Label wires according to the previous terminal connections.



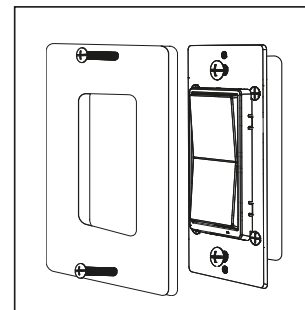
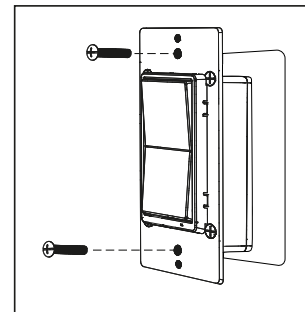
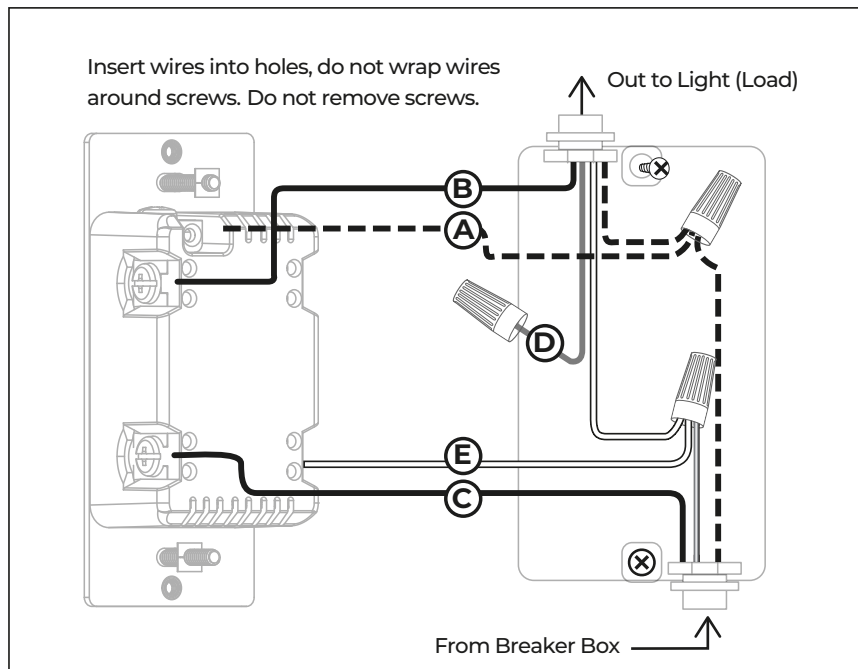
5. There are three screw terminals on the Zigbee Smart Light Switch; these are marked
  - a. LINE (hot) — Black (connected to power)
  - b. NEUTRAL — White
  - c. GROUND — Green/bare

Match these screw terminals to the wires connected to the existing outlet.



**Note:** Smart Light Switch is an AC device and the following instructions are intended for licensed electricians only.

## Observe important wiring information



Always follow the recommended wire strip length (5/8in. or 16mm) and wiring combination when making wiring connections. Consult an electrician with questions or for professional installation.  
UL specifies the tightening torque for the screws is 14Kgf-cm (12lbf-in).

**IMPORTANT! The screw terminals in this receptacle are intended to only be used with copper wire. Consult a qualified electrician if you have aluminum wiring.**

## Wire gauge requirements

Use 14AWG or larger wires suitable for at least 80° C for supplying line (hot), neutral and ground and traveller connections.

## Wire strip length

For attachment using the enclosure's holes, strip insulation 5/8in. (16mm). UL specifies the tightening torque for the screws is 14Kgf-cm(12lbf-in).

1. Connect the green or bare copper ground wire to the GROUND term.
2. Connect the black wire from the light to either LINE/LOAD terminal.
3. Connect the black wire from the electrical service panel (hot) to the other LINE/LOAD terminal.
4. Connect the white wire to the NEUTRAL terminal (use a jumper wire if needed).

**Note: The traveler terminal is only used for 3-way or 4-way wiring and should not be connected if the switch is being installed in a 2-way system (one switch & one load).**

5. Insert switch into the switch box being careful not to pinch or crush wires.
6. Switch must be independently mounted (vertical position only).
7. Secure the switch to the box using the supplied screws.
8. Mount the wallplate.
9. Reapply power to the circuit at fuse box or circuit breaker and test the system.

## Basic operation

The connected device can be turned ON/OFF in two ways:

1. Manually from the front panel of the switch.
2. Remotely with a Zigbee controller.

## Manual control

The front panel rocker switch allows the user to:  
Turn ON/OFF the connected fixture.

1. To turn the connected fixture ON, press the top of the rocker.
2. To turn the connected fixture OFF, press the bottom of the rocker.

## Cycle LED light

The LED below the switch acts as a guide light or status indicator.  
How to cycle through options: Press up three times and down once quickly.

1. LED is ON when the load is OFF (guide light in the dark) (default)
2. LED is ON when the load is ON (indicates the switch is ON)
3. LED is always OFF

## Adding your device(s) to the Zigbee network

**NOTE 1: The icon for the Smart Light Switch is a lightbulb. Do not Delete it.**  
**NOTE 2: Internet connectivity is not necessary during the Zigbee pairing process.**

### Option 1 (Batch Process)

1. Place all the Smart Light Switch on a table or within the same room along with LinkPro Z/ TaHoma gateway at min. 7m distance.
2. For each Smart Light Switch one at a time, have a licensed electrician apply temporary power.
3. Use the TaHoma app products menu, choose to add Zigbee product. Scan the QR code located on the bottom of the Smart Light Switch on the box.
4. Complete this step by naming the switch in the TaHoma app.  
**NOTE: The name chosen will be used for voice control and in the app.**
5. You can now have a licensed electrician disconnect and have that switch permanently installed in the desired location.
6. Apply the steps 2 - 6 again untill all the Smart Light Switch(s) have been paired with your gateway.

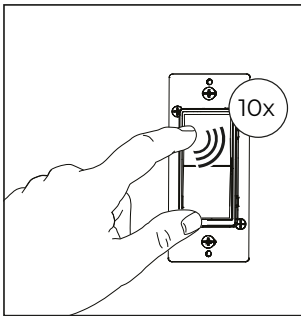
### Option 2 (Remote PoE)

1. Have a licensed electrician install all of the Smart Light Switch(s) in the desired locations.
2. Up to a 100m category cable connected from your PoE switch/ injector to your LinkPro Z.  
**NOTE: This remote commisioning CAT5 cable must be able to reach the furthest shade in the house, from the PoE switch, which is why you will need a long cable.**
3. For each Smart Light Switch one at time, move the LinkPro Z to be a min. of 7m, within the same room.
4. Use the TaHoma app products menu, choose to add Zigbee product. Scan the QR code located on the bottom of the Smart Light Switch on the box.
5. Complete this step by naming the switch in the TaHoma app.  
**NOTE: The name chosen will be used for voice control and in the app.**
6. Apply the steps 3 - 6 again untill all the Smart Light Switch(s) have been paired with your gateway.

### Option 3 (Remote USB)

1. Have a licensed electrician install all of the Smart Light Switch(s) in the desired locations.
2. Using a USB power bank(sold seperately), connect to the USB power cable that is included with TaHoma and connect to the internet with WiFi.
3. For each Smart Light Switch one at time, move the TaHoma to be a min. of 7m, within the same room.
4. Use the TaHoma app products menu, choose to add Zigbee product. Scan the QR code located on the bottom of the Smart Light Switch or on the box.
5. Complete this step by naming the switch in the TaHoma app.  
**NOTE: The name chosen will be used for voice control and in the app.**
6. Apply the steps 3 - 6 again untill all the Smart Light Switchs have been paired with your gateway.

## To remove and reset the device from the Zigbee controller



From your TaHoma app, choose to remove or delete the Smart Light Switch as instructed. The Smart Light Switch will be removed from the Zigbee network following indication from the app. All configuration parameters will be reset after the Smart Light Switch is removed from the network.

## To return to factory defaults

Press the ON button quickly 10 times.

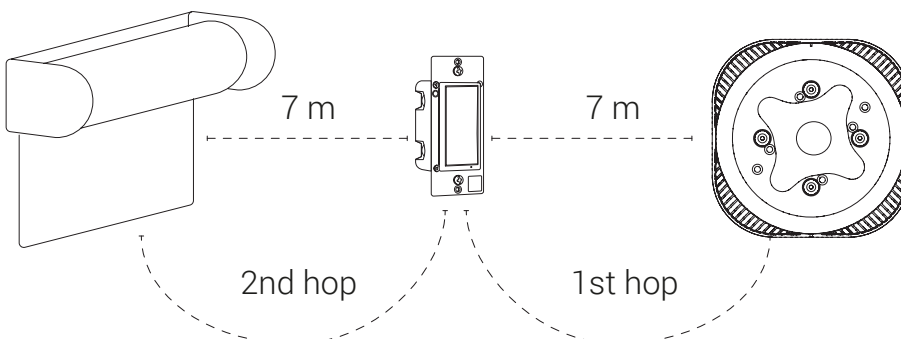
**NOTE:** This should only be used in the event your network's primary controller is missing or otherwise inoperable.

**NOTE:** If you want to now add this back to your Zigbee network, refer to Pg. 5, on how to add a device.

## Troubleshooting

Problem	Probable cause	Action to take
Smart Light Switch shows up in TaHoma app as a lightbulb.	This is due to most users connect lighting sources such as lamp.	No action required, this is the normal state. Do not remove from app/ you will delete the Smart Switch from your system.

## Example System Drawing (Ideal Zigbee 3.0 topology)



**Note:** Each Zigbee node should be within 7m of each other and a maximum of 7 hops from any end point to a mesh controller.



**Screen Innovations**

9715-B Burnet Rd, Suite 400 Austin, TX 78758

512.832.6939

[www.screeninnovations.com](http://www.screeninnovations.com)