

# Ysia Zigbee Remote (1 & 5 channels)

## Installation Instructions





Please use this QR Code to access more documents and Video Tutorials related to the product.



### **Tech Specs**

Scan the QR code to scan Ysia specs sheet

## **CE Information**

SOMFY ACTIVITES SA, 74300 CLUSES FRANCE hereby declares that the radio equipment covered by these instructions is in compliance with the requirements of Radio Directive 2014/53/EU and the other essential requirements of the applicable European Directives. The full text of the EU Declaration of Conformity is available at [www.somfy.com/ce](http://www.somfy.com/ce).

## **UKCA Information**

Somfy limited, Yeadon LS19 7ZA UK, hereby declares that the radio equipment covered by these instructions is in compliance with the requirements of UK legislation: the Radio Equipment Regulations S.I. 2017 N°1206. The full text of the UKCA declaration of conformity is available at [www.somfy.co.uk](http://www.somfy.co.uk).

## **FCC Information**

-This device complies with Part 15 of the FCC Rules.

Operation is subject to the following two conditions:

- (1) This device may not cause harmful interference, and
  - (2) This device must accept any interference received, including interference that may cause undesired operation.
- This equipment complies with FCC radiation exposure limits set forth for an uncontrolled environment. End users must follow the specific operating instructions for satisfying RF exposure compliance.
  - This transmitter must not be co-located or operating in conjunction with any other antenna or transmitter.
  - Changes or modifications not expressly approved by the party responsible for compliance could void the user's authority to operate the equipment.

FCC warning statement:

This device complies with Industry Canada's licence-exempt RSSs.

Operation is subject to the following two conditions:

- (1) This device may not cause interference; and
- (2) This device must accept any interference, including interference that may cause undesired operation of the device.

(FCC: DWN-YSIA1, DWN-YSIA5) [ISED: 12049A-YSIA1, 12049A-YSIA5)

# CONTENTS

Parts in the Box .....	1
In Detail .....	2
Start Up.....	3
Selection of Groups .....	3
Installation .....	4
Replacing the Batteries .....	5

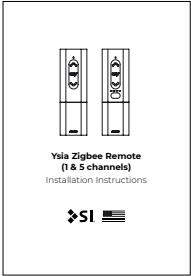
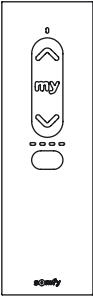
**Technical Support:** 512.832.6939  
**Hours of Support:** 7:30am - 5pm CST

[screensupport@screeninnovations.com](mailto:screensupport@screeninnovations.com)  
[shadesupport@screeninnovations.com](mailto:shadesupport@screeninnovations.com)

# PARTS IN THE BOX



(1) Ysia Zigbee remote  
(1 or 5 channel)



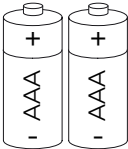
(1) User Instructions



(1) Wall Mount



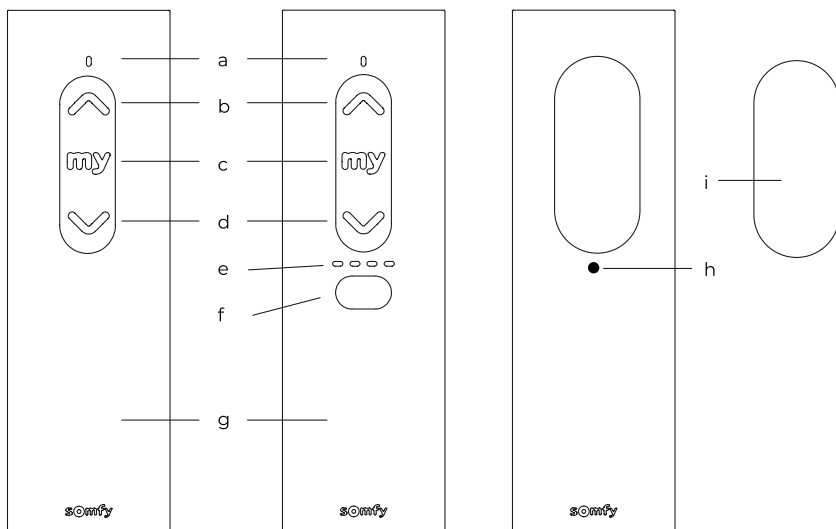
(2) Screws & Anchors



(2) Batteries

# IN DETAIL

- a) Transmission indicator LED
- b) Up button (Short activation enables the application to be raised, switched on or opened. Long activation enables some additional functionality. See complete instructions for more details).
- c) Stop/my button (enables the application to stop by pressing the button once or switched to the favorite position by pressing the button twice).
- d) Down button (Short activation enables the application to be lowered, switched off or closed. Long activation enables some additional functionality. See complete instructions for more details).
- e) Channel or group select LEDs (Ysia 5 Zigbee only)
- f) Channel or group selector (Ysia 5 Zigbee only)
- g) Battery cover
- h) PROG Button
- i) Wall Mount



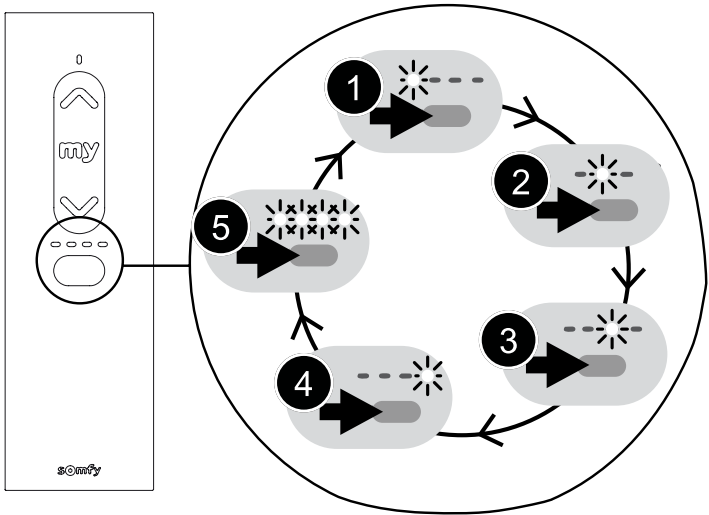
# START UP

Download the TaHoma application if it is not yet installed on the smartphone.

**Note:** Somfy motor can be set and used with this product without TaHoma Box (HUB Optional only).

## SELECTION OF GROUPS

Before using Ysia 5 Zigbee, check that the correct group has been selected.



# INSTALLATION

1

## Adding/Deleting Ysia Zigbee

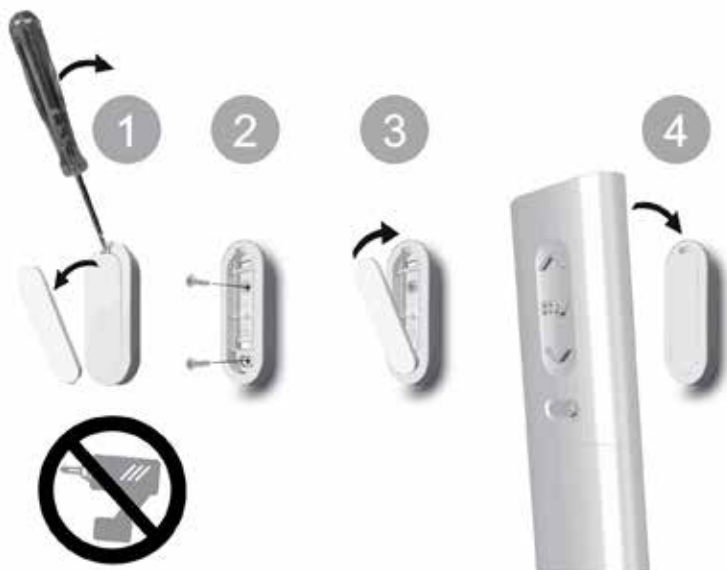
Follow the instructions on the TaHoma application to add or remove a Ysia Zigbee.

2

## Wall mounting (Refer the drawing below)

Open the wall mount (i) and fix it to a flat surface using a screwdriver and an M3-type screw

**Note: Do not use an electric screwdriver.**



# REPLACING THE BATTERIES

Insert the batteries types 2 x AAA LR03, 2 x 1.5 V, as indicated by the polarity (+ and - signs) markings in the battery compartment. The power supply terminals must not be short-circuited.

**Note:** Explosion risk if the battery is replaced by an incorrect type.



Screen Innovations  
9715-B Burnet Rd, Suite 400 Austin, TX 78758  
512.832.6939  
[www.screeninnovations.com](http://www.screeninnovations.com)