

Solo / Pro Suspended Ceiling Brackets

Installation Instructions



Please use this QR Code to access documents related to product and latest instructions.



Suspended Ceiling
Brackets

Thank you for purchasing an SI product. If you have any questions or need any assistance with your Solo/Pro, we would love to help you.

Technical Support: 512.832.6939

Hours of Support: 7:30am - 5pm CST

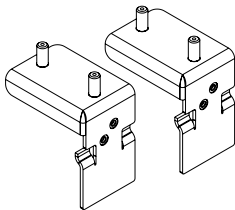
screeninnovations.com

CONTENTS

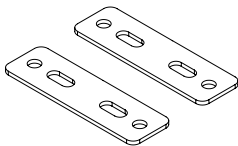
Parts in the Box	Pg 2
Pre-Grid Installation - Option 1	Pg 4 - 12
Post-Grid Installation - Option 2.....	Pg 13 - 18
Warranty	Pg 20

PARTS IN THE BOX

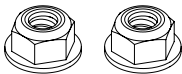
- 1** (2) Suspended Ceiling Brackets



- 2** (2) Top Plates (Small/Medium/Large)



- 3** (2) Lock nuts



- 4** (2) Set Screws for securing the cassette



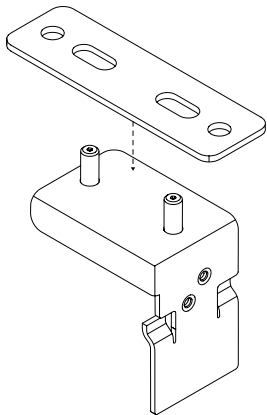
Pre-Grid Installation Sequence

(Option 1)

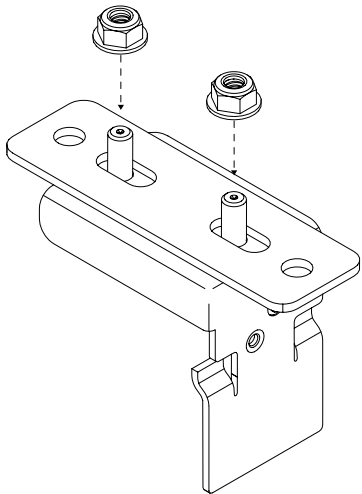
MOUNT TO THREADED ROD THAT IS SECURED TO STRUCTURE.

Assembling Suspended Ceiling Brackets

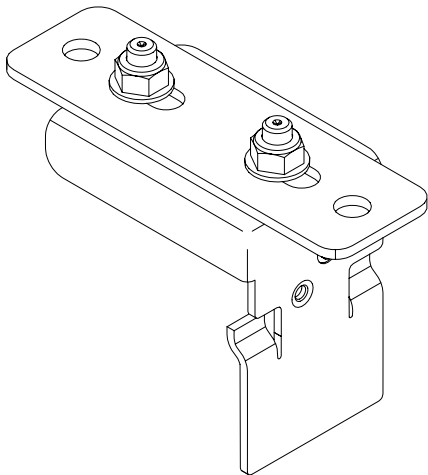
1. Align the slots of the plate with the two (2) threaded studs on the top side of the L bracket.



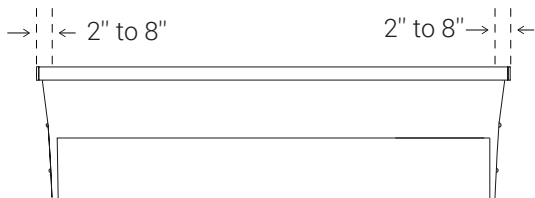
2. Secure with locknuts.

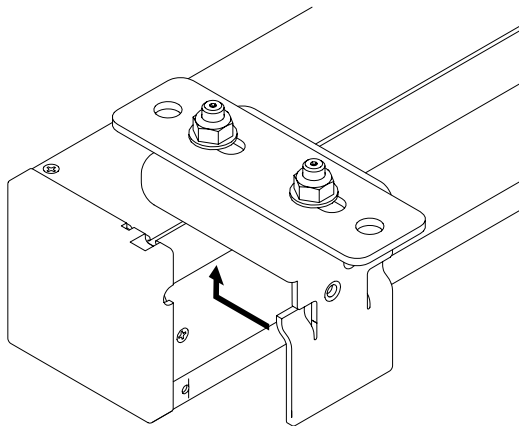


3. Complete assembly ready to be installed on the cassette.

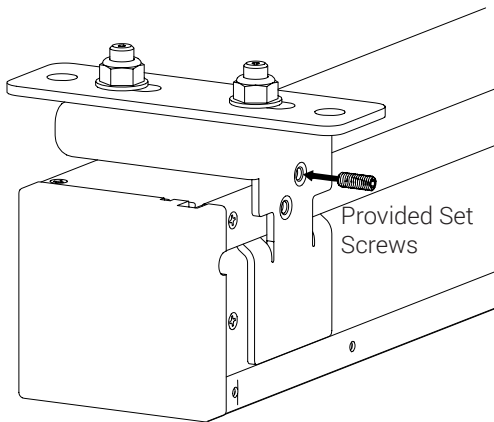


4. Install the bracket assemblies on cassette on the ends of the cassette within 2" and 8" from each end.

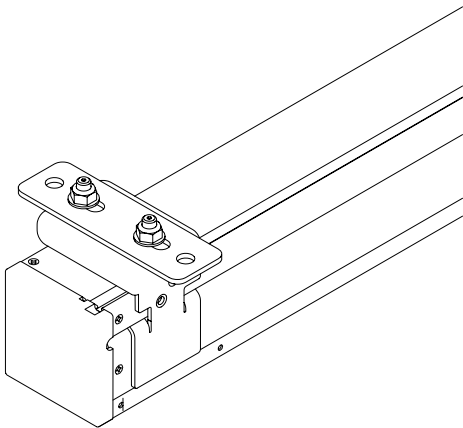




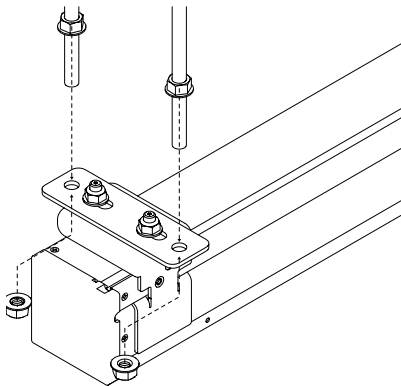
5. Tighten the set screw to secure to cassette.



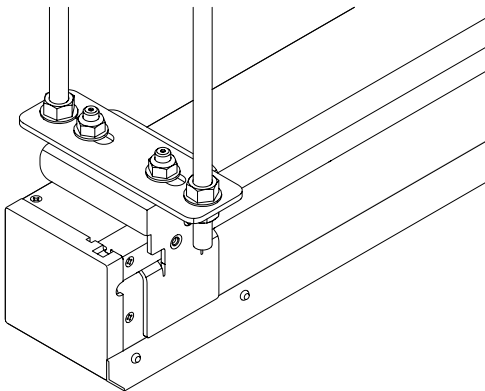
6. Ensure that the bracket is installed properly.
Double-check that the teeth on the bracket are fully engaged to the slot in the back of the cassette, and the set screws are tight.



7. Mounting the Solo to the pre-installed threaded rod. Ensuring you have the locking nut on the threaded rod, lift the screen assembly into position, feeding the threaded rod into the provided holes. Install bottom nut, level the cassette, and tighten the locking nut.

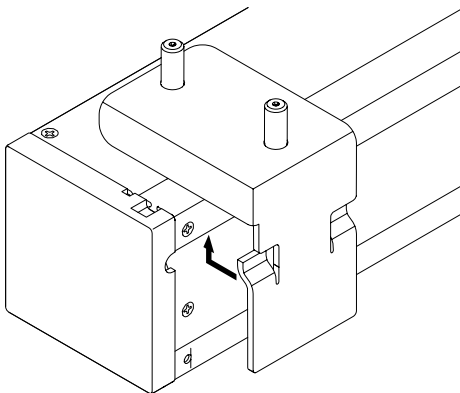


8. Now install your angle trim on the slot side of the cassette, then the T-grid around the screen assembly. DO NOT block the screen slot, or you may damage the screen upon deployment.

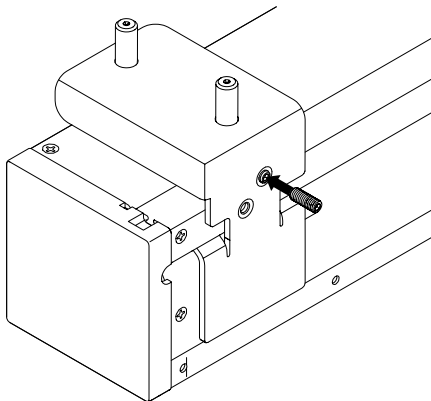


Post-Grid Installation Sequence

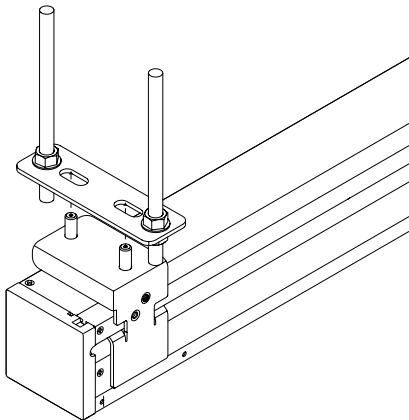
1. Install Bracket assembly onto cassette at both ends of the cassette between 2" and 8" from the ends.



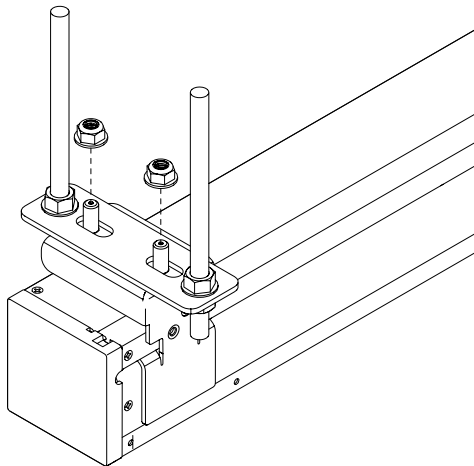
2. Tighten the set screw to secure the cassette.
Double-check that the teeth on the bracket are fully engaged to the slot in the back of the cassette, and the set screws are tight.



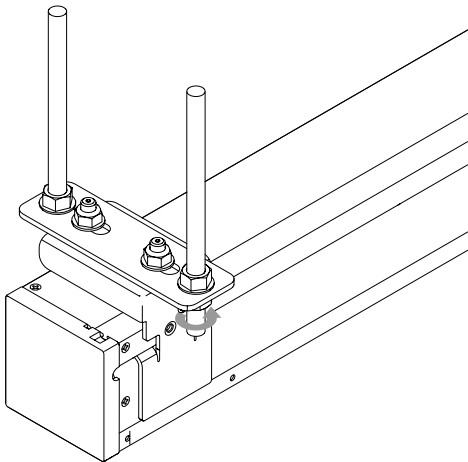
3. All-thread pre-installed into ceiling. Mount flat plate to all thread above final height. Then raise up screen case with L bracket on it and align the threaded stud with the holes in the flat plate.



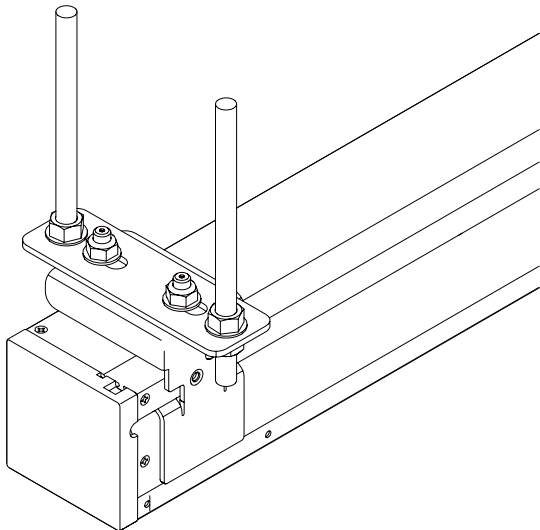
4. Secure with nuts.



5. Adjust the height and level the cassette with the nuts on the threaded rod. Once level, lock the nuts to the plate.



6. Congratulations! You are done with your installation.



Post-Grid Installation Option

WARRANTY

New SI products carry a standard 1- year warranty on parts and labor.

FCC INFORMATION

This device complies with Part 15 of the FCC Results. Operation is subject to the following two conditions:

1. This device may not cause harmful interference, and
2. This device must accept any interference received, including that which may cause undesired operation.

NOTE: This equipment has been tested and found to comply with the limits for CLASS B digital device, pursuant to Part 15 of FCC Rules. These limits are designed to provide reasonable protection against harmful interference when the equipment is operated in a commercial environment.

⚠ Changes or modifications not expressly approved by the manufacturer could void the user's authority to operate the equipment.

Solo/Pro 2, the Solo wordmark, and the Screen Innovations logo are registered trademarks and the exclusive property of Screen Innovations.



Screen Innovations
9715-B Burnet Rd, Suite 400 Austin, TX 78758
512.832.6939
www.screeninnovations.com

v.1.1 | Aug 18, 2020