

Sidekick

Installation Instructions

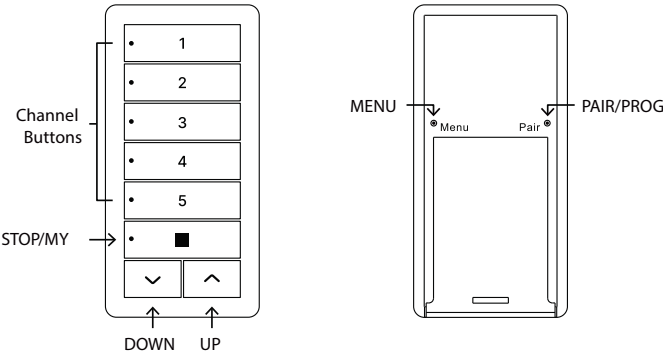


INSTALLERS: Please leave this manual with the owner.



Introduction

Sidekick is a 5-channel wireless keypad that can communicate with multiple motorized shade technologies directly. For ease-of-use, it is designed to work very similarly to the motor manufacturer's remote controls. By default, Sidekick is configured to communicate with Somfy RTS motors, and works similarly to a Somfy DecoFlex or Telis 5 remote control.



Before you start

If you have blinds with motors configured in "tilt-mode" – where holding down the UP or DOWN buttons causes the shade to move only so long as the button is held – then you will want to change the technology to "Somfy Lights & Blinds". To achieve that, press the following:



You can find more details on configuring technologies, on page 11 and 12.

Parts in the Box

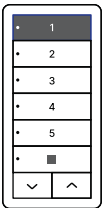
1x Cover Plate	1 x Wall Clip	2 x Drywall Anchors	1x Back buttons
1x Sidekick	2 x Phillips Head Screw	1 x Battery	press tool

Basic Operation

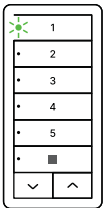
Channel Selection

You may operate one or more channels at the same time. To deselect a channel, first select another one. Its not possible to have no channel selected.

Select Channel

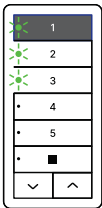


Press desired CHANNEL button

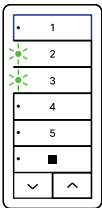


The CHANNEL LED will light up indicating channel selection

Deselect Channel



Press selected CHANNEL button



Button LED will turn off

Raise, Lower, Stop Shade, and Favorite Position

Raise Shade



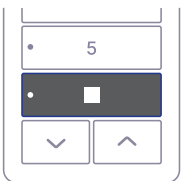
Press UP to raise shade.
It is not necessary to hold the button while the shade is moving

Lower Shade



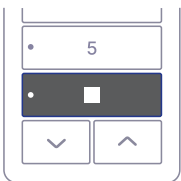
Press DOWN to lower shade.
It is not necessary to hold the button while the shade is moving

Stop Shade



Press STOP while shade is moving

Move Shade to Favorite Position



Press STOP while the shade is stationary

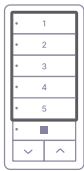
Setup with New Motors

Step 01: Pair Sidekick with new shade motors

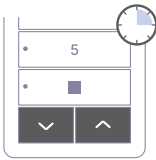
To pair your Sidekick with a window covering without any previously paired control, you must set the motor to factory mode, which can vary from motor to motor. Please check your motor instructions if needed.



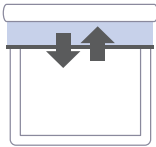
Set your Shade to
Factory Setup Mode



Select which
channel you want
to use



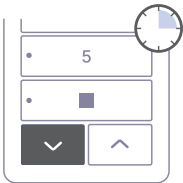
Hold both
UP and DOWN
together



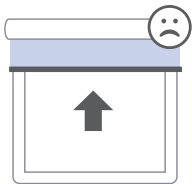
Shade will jog
once

Step 02: Check motor directions

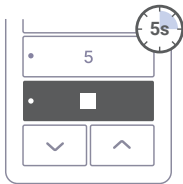
When in Factory Setup Mode, the motor will only move so long as the UP or DOWN buttons are held. Now check the direction of motion and reverse if desired.



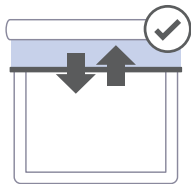
Hold DOWN



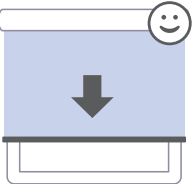
If shade start raising
instead of lowering



Hold STOP for 5
seconds



Shade will jog once,
confirming that
direction was reversed

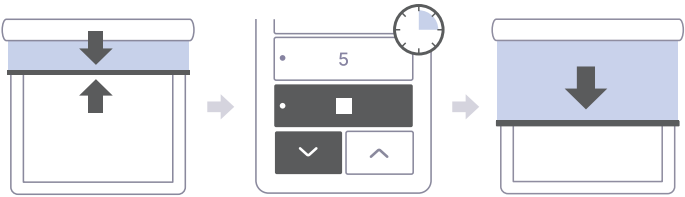


If shade starts
lowering as expected



Go to step 03

Step 03: Set top limit

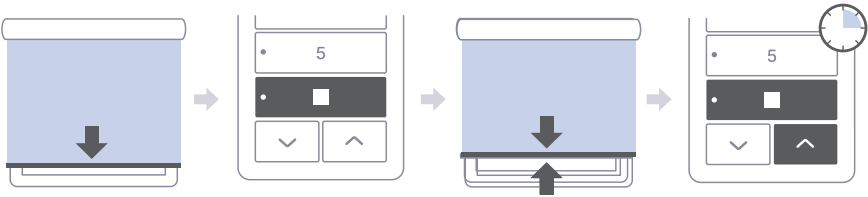


Tap UP or DOWN
to fine-tune top
position

Hold DOWN and
STOP together to
set top limit

Shade will
start lowering
automatically

Step 04: Set bottom limit



When shade
reaches desired
bottom position

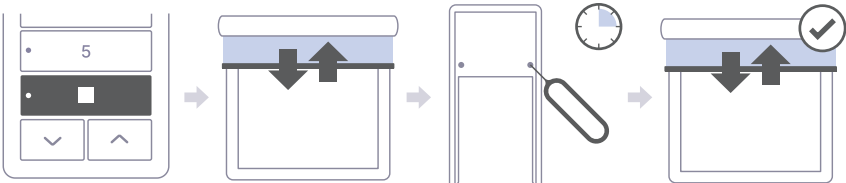
Press STOP to
stop shade from
lowering

Tap UP or DOWN
to fine-tune
bottom position

Hold UP and STOP
together to set
bottom limit.

Motor may not move
to confirm.

Step 05: Finish setup



Hold STOP

Shade will jog once
to confirm that
settings are saved

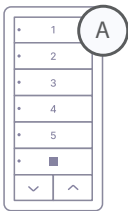
Hold PAIR

Shade will jog once
to confirm that shade
exited factory mode

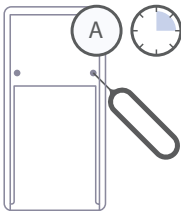
Setup as an Additional Keypad (Remote Control)

Step 1

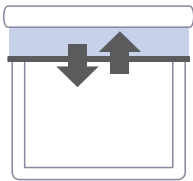
You can pair additional Sidekicks with your shade. You will need to use the existing keypad (A) to introduce the new keypad (B) as shown below.



On Sidekick that is already paired with shade

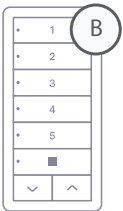


Hold PAIR with tool or paperclip

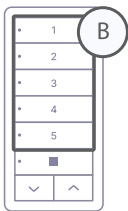


Shade will jog once setting shade to listen mode

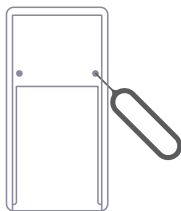
Step 2



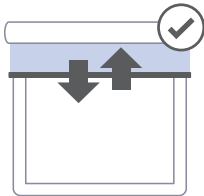
On Sidekick to be added to the shade



Select which channel you want to use

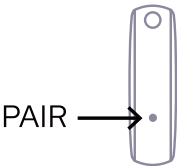


Press PAIR with tool or paperclip



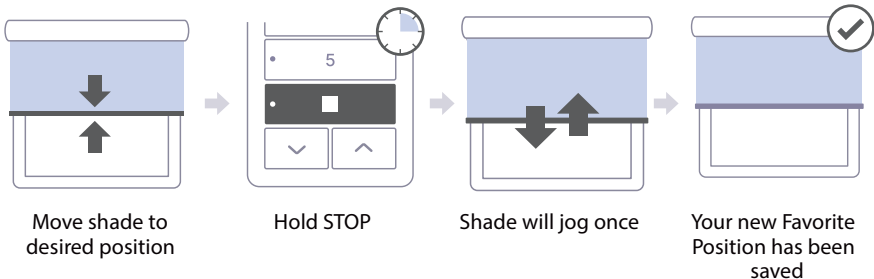
Shade will jog once to confirm that keypad was paired

NOTE: You can also introduce a new Sidekick (B) using a Somfy Telis or Situo remote instead of Sidekick (A). Just follow the instructions above using the button in the back of your Somfy Telis or Situo remote controller as Sidekicks PAIR button.



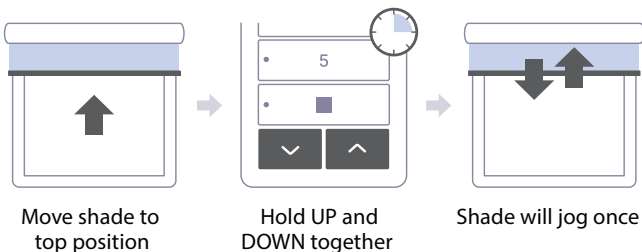
Advanced Operation

Save Favorite Position

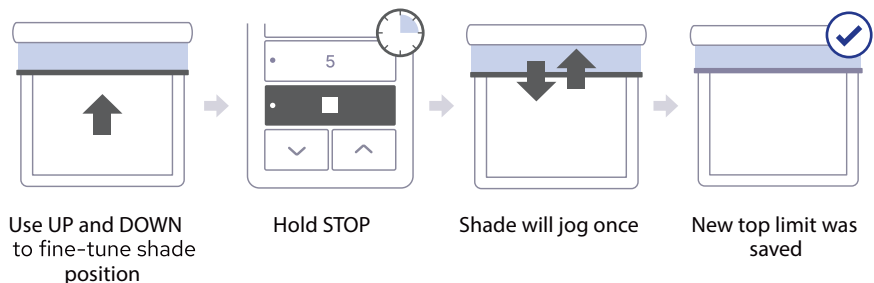


Adjust Top Limit

Step 1



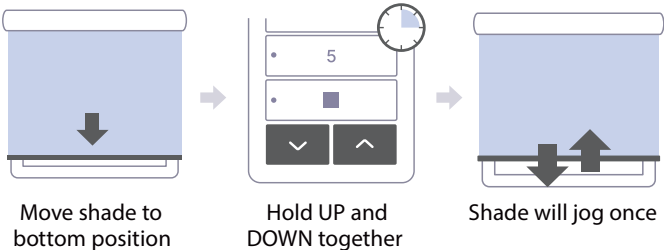
Step 2



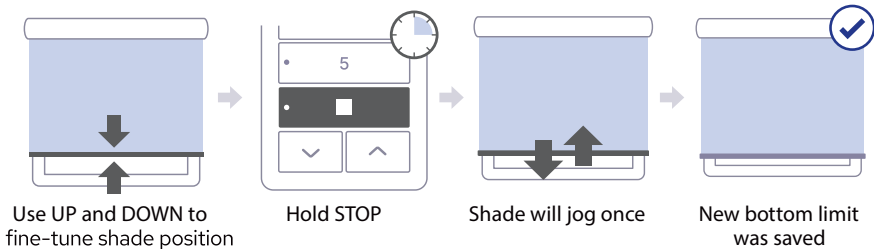
Advanced Operation

Adjust Bottom Limit

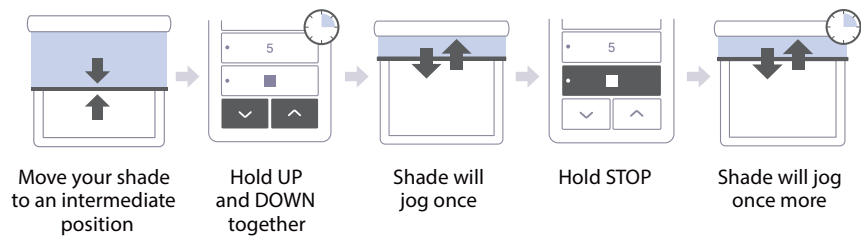
Step 1



Step 2

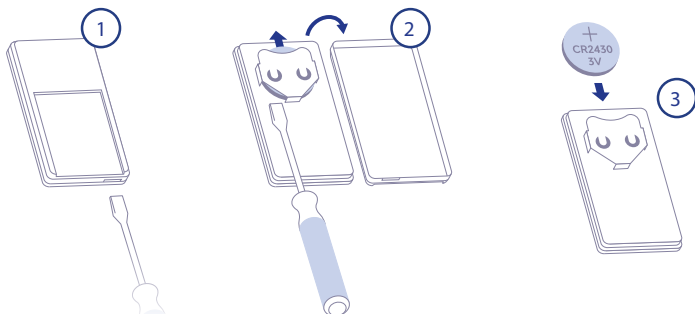


Reverse Motor Direction



Battery Replacement

When in Factory Setup Mode, the motor will only move so long as the UP or DOWN buttons are held. Now check the direction of motion and reverse if desired.



1. Separate the Sidekick covers using a Screw Driver.
2. Once the back cover has been removed, use a screwdriver to assist in removing the battery. Ensure that the circuit board is not damaged during this process.
3. The replacement battery should have its label facing up. Check that the replacement battery has not been used or stored for more than a year. The battery lifespan of the SKS-500 will be reduced if it is stored for an extended period of time.

Linking with a J4M35 or Bond Bridge Pro

When paired with Bond Bridge Pro, Sidekick can update the state of your shades in the Bond Home app. To turn on this feature, link each Sidekick channel with the corresponding shade or shades on the Bond Home app.

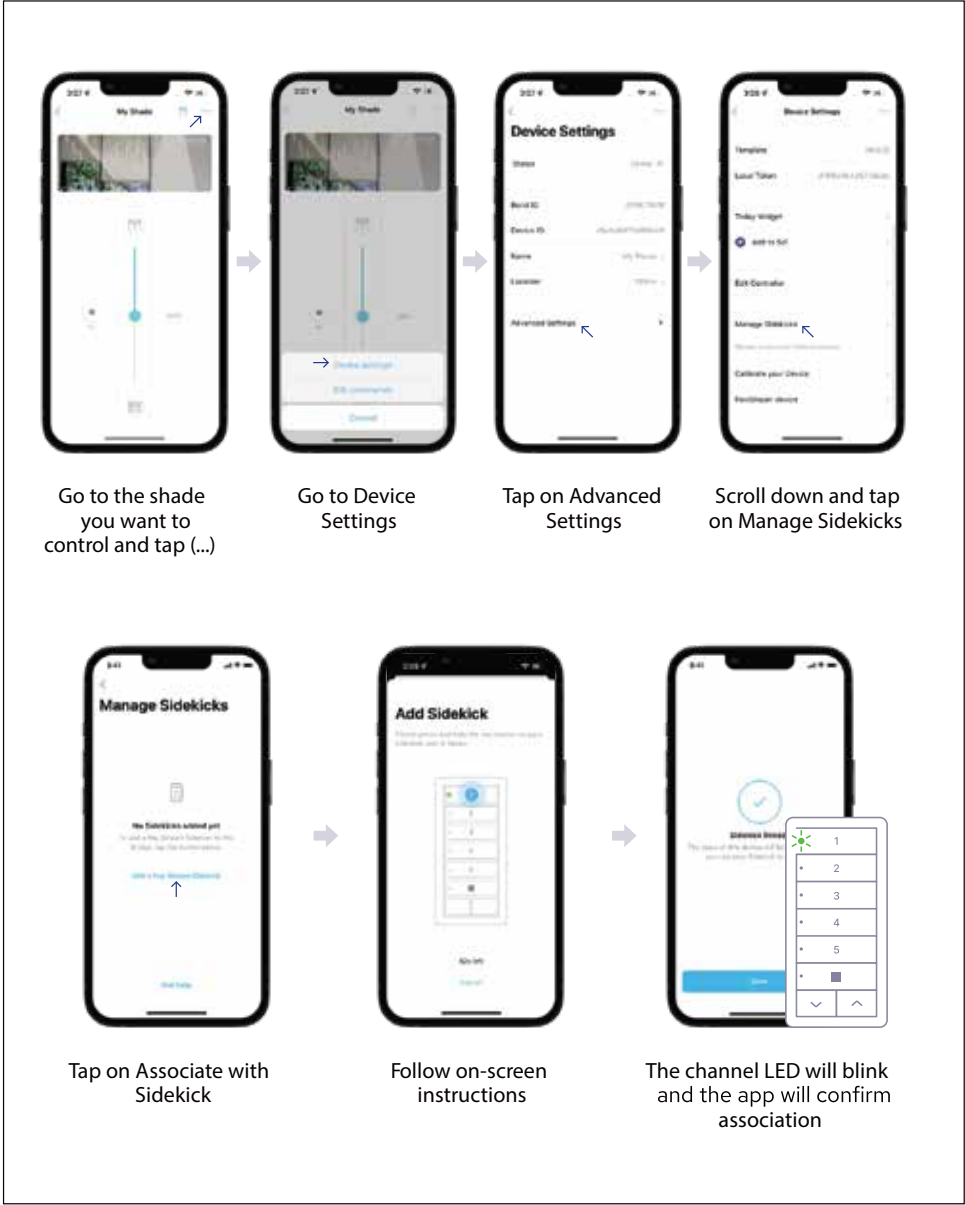
To link your Sidekick with your SI app you need to make sure that:

1. Your J4M35 or Bond Bridge Pro firmware is on version 3.1 or higher.
2. Your SI app is updated to version 2.40.0 or higher.
3. You can control your shade from the SI app.
4. You can control that same shade from the Sidekick*



Note: *If you cannot control the shade with Sidekick due to range or technology limitations, you may use Relay Mode to have J4M35 or Bond Bridge Pro transmit instead. See pg. 12.

Linking with J4M35 or Bond Bridge Pro on iOS



Linking with J4M35 or Bond Bridge Pro on Android



Go to the shade
you want to
control and tap (...)

Go to Settings

Tap on Advanced
Settings

Scroll down and tap
on Manage Sidekicks



Tap on Link a Sidekick
Channel

Follow on-screen
instructions

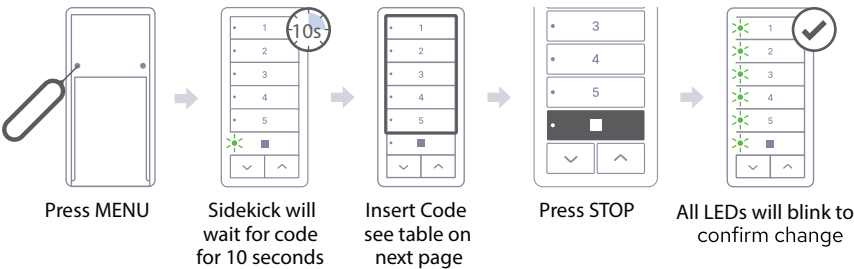
The channel LED will blink
and the app will confirm
association

Mixing Motor Technologies

Sidekick supports a variety of motor technologies. Follow the instructions below to learn how to expand your Sidekick capabilities.

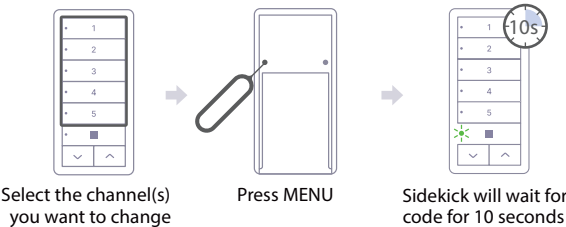
Note: If at any time you wish to cancel the change, you may press the UP button to exit. If you enter an invalid code, or press any other key during the sequence, or there is no activity for 10 seconds, Sidekick will go back to normal operation without any change.

Changing technology for all channels

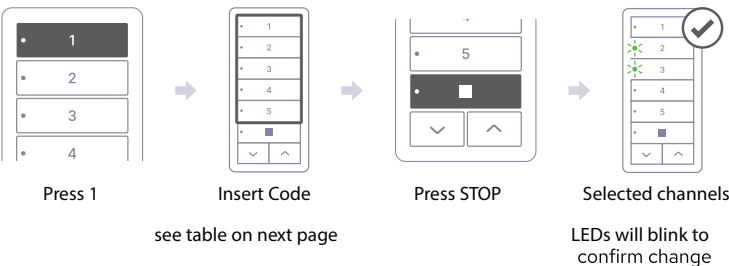


Changing technology only for specific channels

Step 1: Channel(s) Selection



Step 2: Setting Technology



Motor Technology Codes Table

Technology	Code
Somfy RTS roller mode	• 2
Rollease Automate ARC	• 3
NICE Green interior motors / F-Code	• 4
Dooya Bidirectional including Wynstan and other brands	• 2 ➡ • 3
Motion Blinds Coulisse	• 2 ➡ • 4
Somfy Lights & Blinds and motors in tilt mode often used with blinds	• 3 ➡ • 4

Relay Mode

In Relay Mode, the specified channels of Sidekick keypad will not transmit any signal directly, instead relying on Bond Bridge Pro to send the signal to the shade. This is especially useful if you want Sidekick to control an All Shades channel where some shades are out of range of the Sidekick, because Bond Bridge Pro is usually in a more advantageous location for radio range.

To enable relay mode on all channels:



To enable relay mode only on currently selected channels:



To exit Relay Mode for any channel, simply set the channel back to the desired direct technology.

Note: *If you cannot control the shade with Sidekick due to range or technology limitations, you may use Relay Mode to have Bond Bridge Pro transmit instead.

Safety and Legal

Trademark Notice

Bond, Bond Home, Sidekick, and Sidekick for Shades are trademarks of Olibra LLC. Somfy, RTS, DecoFlex, Telis 5, and other trademarks are the property of Somfy Activities SA (henceforth "Somfy").

Decora is a trademark of Leviton Manufacturing Co., Inc. We use these trademarks in this User Manual for the express and limited purpose of elucidating the operation of our SKS-500 product. Our use of these trademarks should not be understood to constitute an endorsement by Somfy or any other trademark rights-holder.

Safety

Improper installation or operation of this product may result in personal injury or property damage. Please follow these instructions carefully including the following important safety notes:

This product contains a lithium coin cell battery. Please beware the following regarding this battery:

These batteries are small and can be a choking hazard for small children.

The chemicals inside the battery can cause fire, explosion, or severe burns if mishandled. Do not dispose of in fire, do not eat, and do not puncture. Dispose only in accordance with local regulations for hazardous materials.

These coin cell batteries are NOT rechargeable. Only replace with another non-rechargeable ("primary") 3V lithium battery of size CR2430. Use of an unauthorized battery is unsafe and will void your warranty.

This product is designed to operate motorized shades, awnings, and pergolas. The movement of these shades or awnings may pose a physical threat to people in their vicinity. For this reason, please beware the following:

Please follow all manufacturer safety instructions regarding the installation, operation, and maintenance of your shade, awning, pergola, or similar appliance.

Do not permit children to operate this product. When installing on a wall, install at a height out of reach of small children.

Do not operate if under the influence of alcohol or other drugs which may impair reaction time or judgment.

Legal

This device complies with part 15 of the FCC Rules. Operation is subject to the following two conditions: (1) this device may not cause harmful interference, and (2) this device must accept any interference received, including interference that may cause undesired operation. Changes or modifications not expressly approved by Olibra could void the user's authority to operate the equipment.

For more information on avoiding interference, see the full manual. Hardware and firmware is Copyright © Olibra LLC, 2022. All rights reserved. Firmware includes ChibiOS/HAL Copyright © 2022 Giovanni Di Sirio, used under terms of the Apache License v2.0. Firmware also includes tiny print library Copyright © 2014–2019, Marco Paland of PALANDesign Hannover, Germany, used under terms of the MIT License. For the text of the Apache and MIT licenses, see the full manual.
Bond, Bond



Screen Innovations
9715-B Burnet Rd, Suite 400 Austin, TX 78758
512.832.6939
www.screeninnovations.com