

Side Channels

Installation Instructions

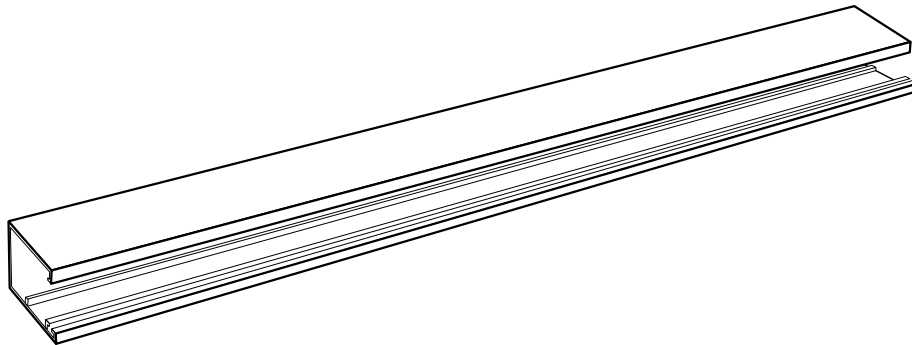
Nino Shades
(Inside & Outside mount)



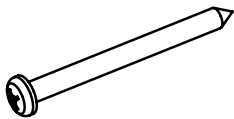
INSTALLERS: PLEASE LEAVE THIS MANUAL WITH THE OWNER.



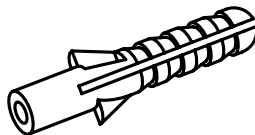
PARTS LIST - Side Channels



Side Channels (2)



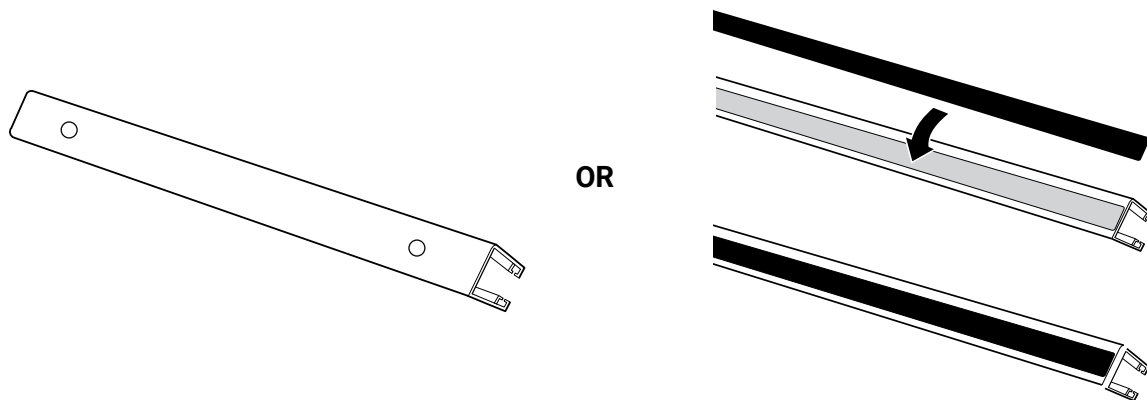
Screws (4 each)



Plugs (4 each)

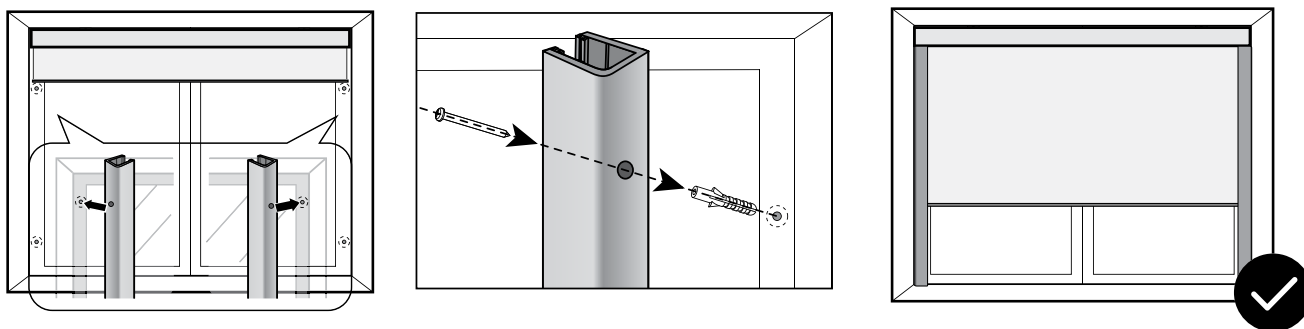
INSTALLATION - Side Channels (Inside Mounting)

- 1 Use the pre-drilled holes, or use the pre-installed double-sided tape.



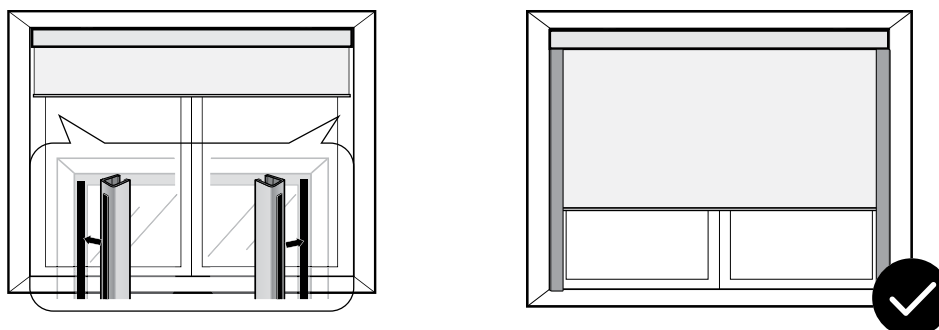
Pre-Drilled Holes.

Drill the holes inside the window frame and secure with screws.



Pre-Installed 3M Tape.

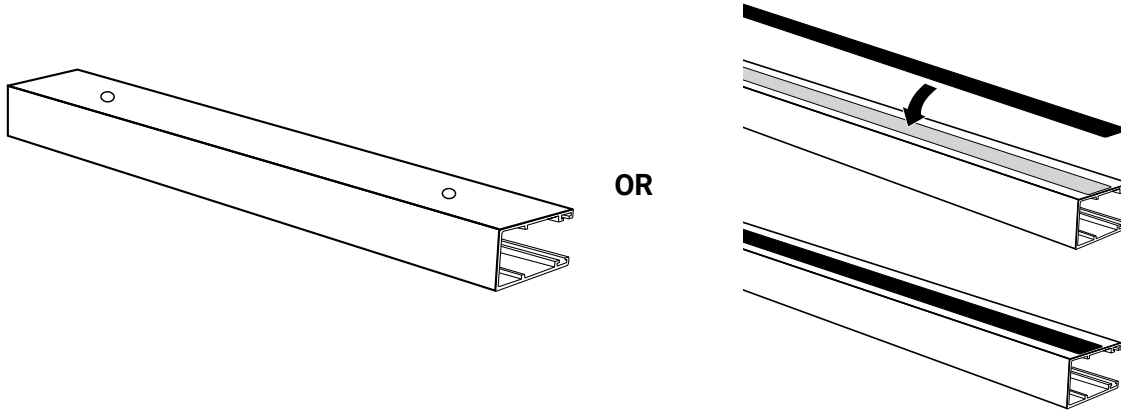
Remove the protective layer from the 3M tape, and then attach to each side of the window frame.



INSTALLATION - Side Channels (Outside Mounting)

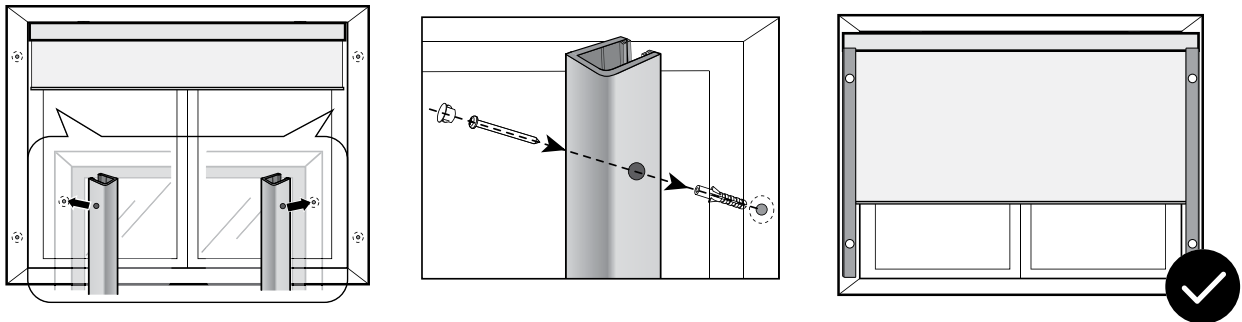
1

Use the pre-drilled holes, or use the pre-installed double-sided tape.



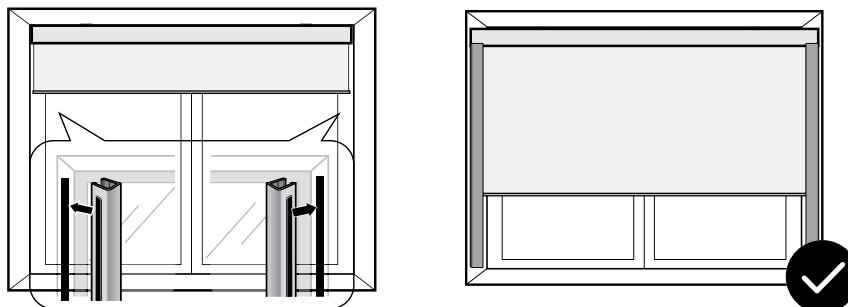
Pre-Drilled Holes.

Drill the holes inside the window frame and secure with screws.



Pre-Installed 3M Tape.

Remove the protective layer from the 3M tape, and then attach to each side of the window frame.





9715-B Burnet Rd, Suite 400 Austin, TX 78758
512.832.6939
www.shadeinnovations.com