

Decoflex

Wirefree RTS

Switch

Installation Instructions



INSTALLERS: Please leave this manual with the owner.





Somfy® and Decoflex are copyrighted and owned by Somfy Systems Inc. and are used in this document with permission and in full compliance with the June 2016 Somfy Trademarks, Logos, and Marketing Assets Guide and Use Agreement.

All product names, logos, and brands are property of their respective owners. All company, product, and service names used in this document are for identification purposes only. Use of these names, logos, and brands does not imply endorsement.

2022 Copyright© US SCREEN CORPORATION



Scan this QR Code
to access the
updated installation
instructions and
related documents.

Technical Support: 512.832.6939

Hours of Support: 7:30am - 5pm CST

| screeninnovations.com

| support@screeninnovations.com

TABLE OF CONTENTS

Product Description4

Programming – Decoflex Wirefree5

Operating the Decoflex Wirefree Wall Switch.....7

Installation – Decoflex Wirefree.....8 – 12

Replacing the Battery 13

Assemble 2, 3, and 4 Channel Switches 14

Replacing Standard (Blank) Channel Buttons..... 15

PRODUCT DESCRIPTION

The DecoFlex RTS Switch is a wireless radio transmitter compatible with all Somfy RTS Motors and externally mounted RTS receivers.

- Commands are transmitted by radio waves at 433.42 MHz.
- Power: 3V lithium battery, CR 2450 type
- Operating temperature: +5 C/41 F to +40 C/104 F
- Range: Up to 65 Ft.
- Fits into standard Decora Wall Plates

The Somfy DecoFlex WireFree RTS switch is a low voltage device which in many cases does not require an electrical box. It can be mounted adjacent to an existing Decora style light switch or as a stand-alone device using the (included) SOMFY low voltage mounting bracket (See installation section for details).



1 CHANNEL

White: 1810897

Ivory: 1810898

Black: 1810899

5 CHANNEL

White: 1810813

Ivory: 1810814

Black: 1810830

PROGRAMMING – DECOFLEX WIRELESS

Adding a Decoflex Wirefree RTS Wall Switch – Initial Installation

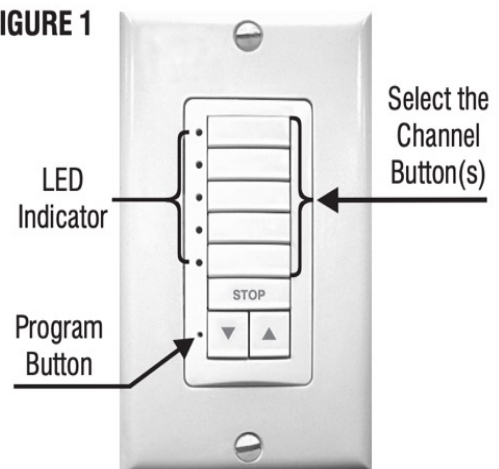
NOTE: During initial programming it is recommended to provide power only to the motor or RTS receiver being programmed.

1. Set the RTS Receiver or Motor into Programming Mode (Refer to the installation instructions of the relevant RTS receiver or motor for this procedure).
2. Select a Channel to be memorized by pressing the appropriate CHANNEL BUTTON. The adjacent LED will light to indicate the channel has been selected. (See figure 1)
3. Using a paperclip or similar device, briefly press the programming button (1 second max) located on the DecoFlex WireFree switch (See figure 1). The RTS receiver or motor will confirm the addition of the new DecoFlex switch in their respective manners

Adding Additional Channels or Decoflex Wirefree Wall Switches

1. Using a paperclip or similar device, press and hold the program button (for 3 seconds) on the previously addressed DecoFlex switch or channel in memory. The RTS receiver or motor will confirm programming mode in their respective manners.
2. Select a NEW channel or DecoFlex switch to be memorized by pressing the appropriate CHANNEL BUTTON. The adjacent LED will illuminate to indicate the channel has been selected (See figure 1).
3. Using a paperclip or similar device, briefly press the programming button (1 second max) located on the DecoFlex switch (See figure 1). The RTS receiver or motor will confirm the addition of the new channel or DecoFlex switch in their respective manners.

FIGURE 1



PROGRAMMING – DECOFLEX WIRELESS

Deleting Specific Channels or Decoflex Wirefree Wall Switch from Memory

1. Using a paperclip or similar device, press and hold the program button (for 3 seconds) on a previously addressed DecoFlex switch or channel in memory (See figure 1). NOTE: This SHOULD NOT be performed with the device or channel intended for deletion.

The RTS receiver or motor will confirm programming mode in their respective manners.

2. Select a Channel to be deleted by pressing the appropriate CHANNEL BUTTON. The adjacent LED will illuminate to indicate the channel has been selected (See figure 1).

NOTE: Only one channel can be deleted per procedure. To remove/delete additional channels, proceed to Step 3 then start at Step 1 for each channel to be deleted.

3. Using a paperclip or similar device, briefly press the programming button (1 second max) located on the DecoFlex switch (See figure 1). The RTS receiver or motor will confirm the deletion of the selected channel or DecoFlex switch in their respective manners.

OPERATING THE DECOFLEX WIREFREE WALL SWITCH

1. Select the CHANNEL BUTTON(s) programmed to a specific window covering(s). The adjacent LEDs will illuminate to indicate the channel(s) selected (press CHANNEL BUTTON(s) in successive order to DESELECT, the adjacent LEDs will extinguish to indicate the deselected channels).
2. To raise the window covering(s), press the UP button. To lower the window covering(s), press the DOWN button.
3. To stop the window covering(s) at any time, simply press the STOP button (see figure 2).
4. If a "Preferred Position" has been programmed, the window covering(s) can be commanded to travel to a preprogrammed intermediate position. (Refer to the installation instructions of the relevant RTS receiver or motor for this procedure).

NOTE: If a command button (UP, DOWN, STOP), is pressed without a channel button(s) selected, the Decoflex will default to the channel button(s) previously selected. Selecting multiple CHANNEL BUTTONS for "group" activation will result in a sequential-output whereby each channel will activate in sequence from channel 1–5.

INSTALLATION – DECOFLEX WIRELESS

Included is a special SOMFY low voltage device mounting bracket which attaches to drywall and eliminates the need for an electrical box. The bracket can be used in two mounting type configurations, they are as follows:

1. The bracket is specifically designed for mounting the DecoFlex WireFree RTS wall switch to an adjacent (pre-existing) Decora style light switch (see below). This unique mounting bracket allows the necessary spacing for 2 adjacent switches and a new “Double Gang” (2 Gang) wall plate to be installed resulting in an aesthetically pleasing professional installation.

NOTE: When following configuration 1. The mounting bracket is not designed to be used in conjunction with “old-work” or retrofit electrical boxes (please check local codes to determine if an electrical box is required for your installation).

For increased radio performance, Somfy recommends the use of non-metallic electrical enclosures.

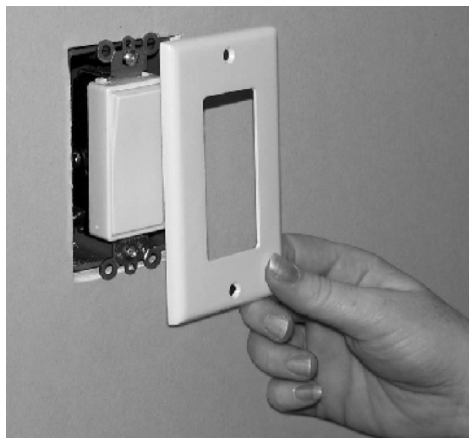
2. The bracket can also be used for individual or “stand-alone” (1 switch) mounting configurations.

Required Tools:

1. Screw drivers (Phillips and Bladed)
2. Drywall saw
3. Wall stud sensor
4. Non-marring tape
5. Pencil

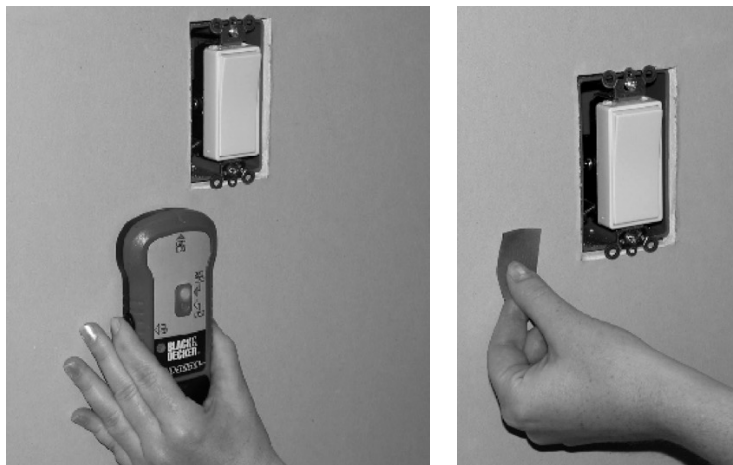
Steps:

1. Locate an existing light switch and remove wall plate exposing electrical box. Somfy recommends shutting off power to the exposed electrical box prior to installation.

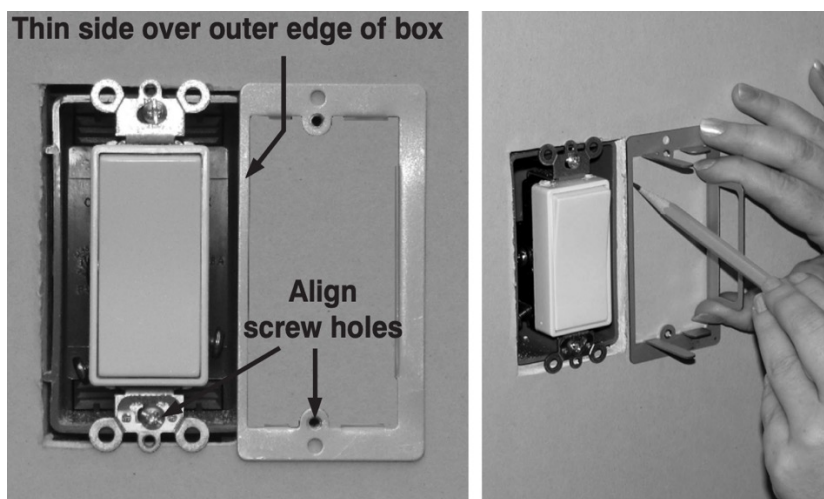


INSTALLATION – DECOFLEX WIRELESS

2. Using a stud sensor, locate the stud nearest to exposed electrical box. Then mark (for reference) with removable tape or pencil.



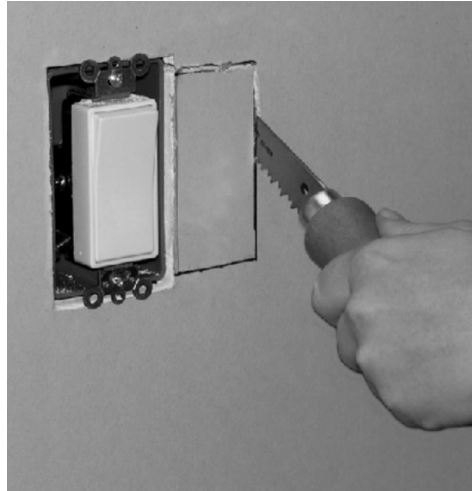
3. Thin side over outer edge of box Place the flat side of mounting bracket (included) against the wall and align the thin side over the outside edge of the existing electrical box (opposite the stud side). Center the bracket to align the mounting screw height with existing switch, then trace the inside shape of the bracket on wall using a pencil or thin marker.



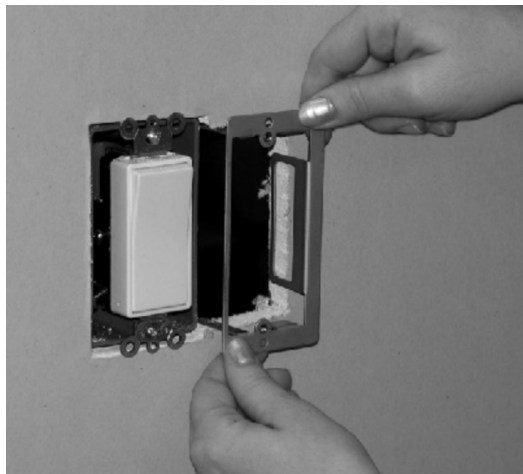
INSTALLATION – DECOFLEX WIRELESS

4. Using a dry wall saw (or similar) begin to cut the drywall along the traced outline. Do not cut hole larger than outline as this may result in a loose-fitting bracket.

NOTE: Hole dimensions for Step 4 mounting bracket are (1 5/8" W x 3 7/16" L).

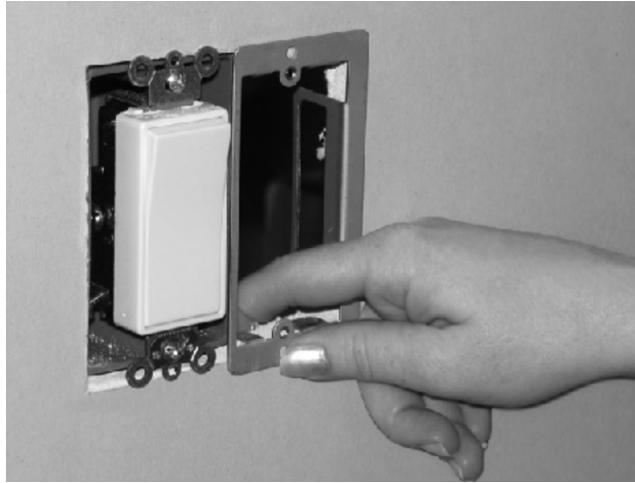


5. Insert bracket (as shown) into hole, keeping the thin side closest to the edge of the existing switch box.

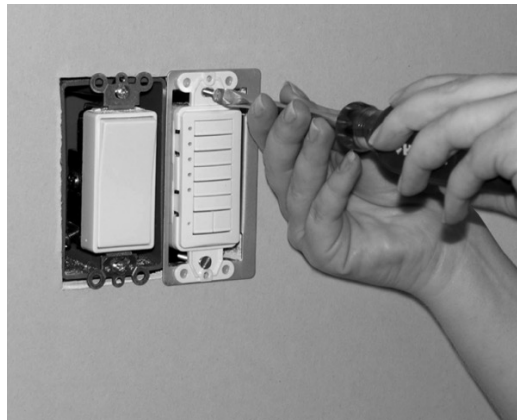


WIRE CONSIDERATIONS – NANO BOX

6. Carefully bend bracket tabs 90 degrees behind the dry wall to ensure a tight secure fit.

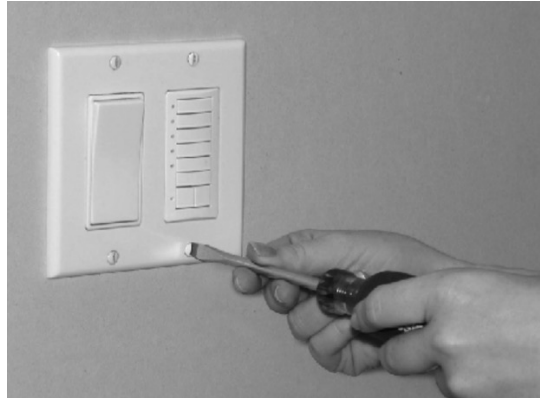


7. Position the DecoFlex RTS switch into mounting bracket aligning the screw holes. Ensure that the wire antenna remains as straight as possible behind the wall. Secure switch to mounting bracket with screws (provided).



INSTALLATION – DECOFLEX WIRELESS

8. Attach a new (2 gang) or double gang Decora style wall plate over both switches to complete installation.

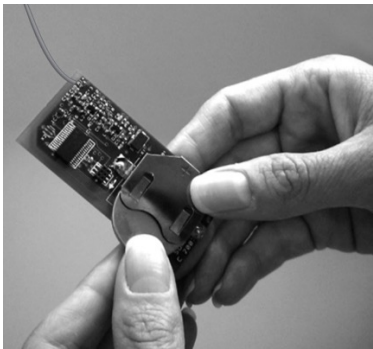


REPLACING THE BATTERY

The DecoFlex WireFree RTS switch is designed to provide years of maintenance-free performance. Should the battery become discharged, the LED indicator lights will no longer function when the channel button is selected, or an Up/Stop/Down command is activated. As a result, the radio signal will be reduced or not communicated to the RTS receiver or motor.

The battery can be easily replaced by exposing the SWITCH BASE ASSEMBLY board of the DecoFlex WireFree switch. Simply slide the battery out of its holder and replace with a new 3V Lithium battery (type 2450) maintaining the correct polarity.

NOTE: Batteries should be disposed of properly according to local regulations.



ASSEMBLE 2, 3, AND 4 CHANNEL SWITCHES

1. Begin with a standard (assembled) 1 or 5 channel button DecoFlex switch - Using a small flat blade screwdriver, carefully separate the SWITCH BASE ASSEMBLY from the FACEPLATE (as shown in figure 1).
2. Add or remove CHANNEL BUTTONS (as required) from the SWITCH BASE ASSEMBLY (as shown in figure 2). Be certain the SWITCH BASE ASSEMBLY remains intact.
3. Attach new 2, 3, or 4 channel button face plate (as shown in figure 3 & 4)

**5 Channel DecoFlex
Wall Switch
(Exploded view)**

**Removable
Channel Buttons**

**Switch Base
Assembly**

**5 Channel
Faceplate**



Figure 1.

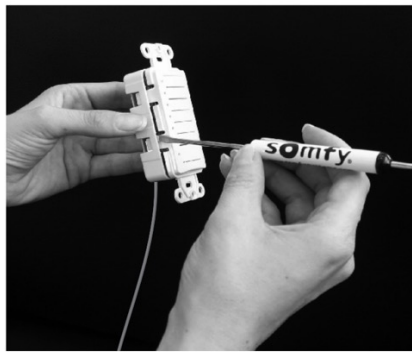


Figure 2.

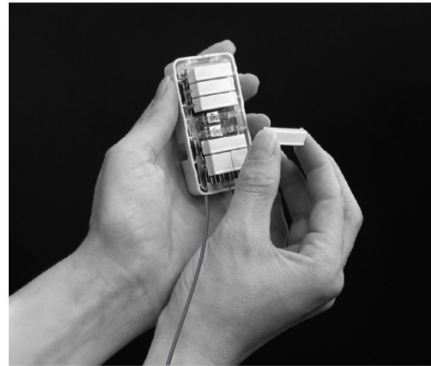


Figure 3.

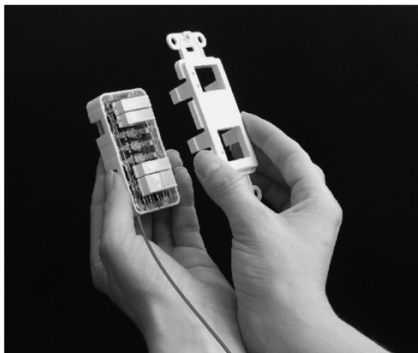
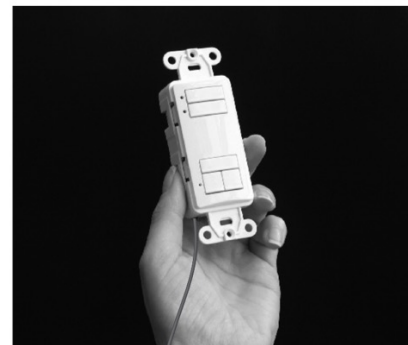


Figure 4.



REPLACING STANDARD (BLANK) CHANNEL BUTTONS

Replace standard (blank) channel buttons with printed channel buttons by:

1. Using a small flat blade screwdriver, carefully separate the SWITCH BASE ASSEMBLY from the FACEPLATE (as shown in figure 1).
2. Replace standard (blank) or temporary labeled CHANNEL BUTTON(s) with new printed CHANNEL BUTTON(s).
3. Attach new CHANNEL BUTTON FACE PLATE (as shown in figure 3 & 4).



**2 Channel
Switch Assembly**



**3 Channel
Switch Assembly**



**4 Channel
Switch Assembly**

WARNING: Changes or modifications not expressly approved by the manufacturer could void the user's authority to operate the equipment.



Screen Innovations

9715-B Burnet Rd, Suite 400 Austin, TX 78758

512.832.6939

www.screeninnovations.com