

## Owner's Manual



**INSTALLERS:** PLEASE BE SURE TO LEAVE THIS  
MANUAL WITH THE OWNER. THANK YOU!

APPLY S/N  
STICKER HERE



## LIMITED ONE YEAR WARRANTY ON SCREEN INNOVATIONS PRODUCTS

Screen Innovations warrants its products, to the original purchaser only, to be free from defects in materials and workmanship for a period of one (1) year from the date of purchase by the original purchaser provided they are properly operated according to Screen Innovations' instructions and are not damaged due to improper handling or treatment after shipment from the factory.

This warranty does not apply to equipment showing evidence of misuse, abuse, or accidental damage, or which has been tampered with or repaired by a person other than authorized Screen Innovations personnel.

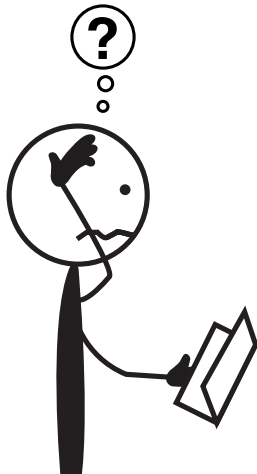
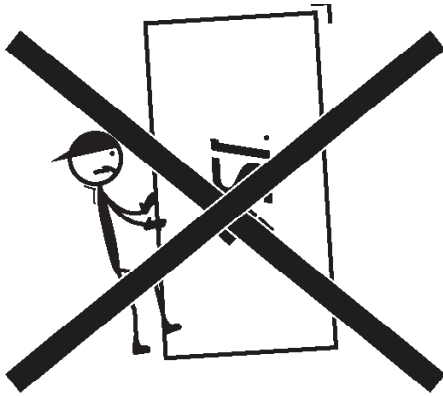
Screen Innovations' sole obligation under this warranty shall be to repair or to replace (at Screen Innovations' option) the defective part of the merchandise. Returns for service should be made to your Screen Innovations' dealer. If it is necessary for the dealer to return the screen or part to Screen Innovations, transportation expenses to and from Screen Innovations are payable by the purchaser and Screen Innovations is not responsible for damage in shipment. To protect yourself against damage or loss in transit, insure the product and prepay all transportation expenses.

THIS WARRANTY IS IN LIEU OF ALL OTHER WARRANTIES, EXPRESS OR IMPLIED, INCLUDING WARRANTIES AS TO FITNESS FOR USE AND MERCHANT ABILITY. Any implied warranties of fitness for use, or merchantability, that may be mandated by statute or rule of law are limited to the one (1) year warranty period. This warranty gives you specific legal rights, and you may also have other rights, which vary from state-to-state. NO LIABILITY IS ASSUMED FOR EXPENSES OR DAMAGES RESULTING FROM INTERRUPTION IN OPERATION OF EQUIPMENT, OR FOR INCIDENTAL, DIRECT, OR CONSEQUENTIAL DAMAGES OF ANY NATURE.

In the event that there is a defect in materials or workmanship of a Screen Innovations product, you may contact our Sales Partners at 9715-B Burnet Road Suite 400, Austin, TX 78758, (512) 832-6939.

IMPORTANT: THIS WARRANTY SHALL NOT BE VALID AND SCREEN INNOVATIONS SHALL NOT BE BOUND BY THIS WARRANTY IF THE PRODUCT IS NOT OPERATED IN ACCORDANCE WITH SCREEN INNOVATIONS' WRITTEN INSTRUCTIONS.

Keep your sales receipt to prove the date of purchase and your original ownership.

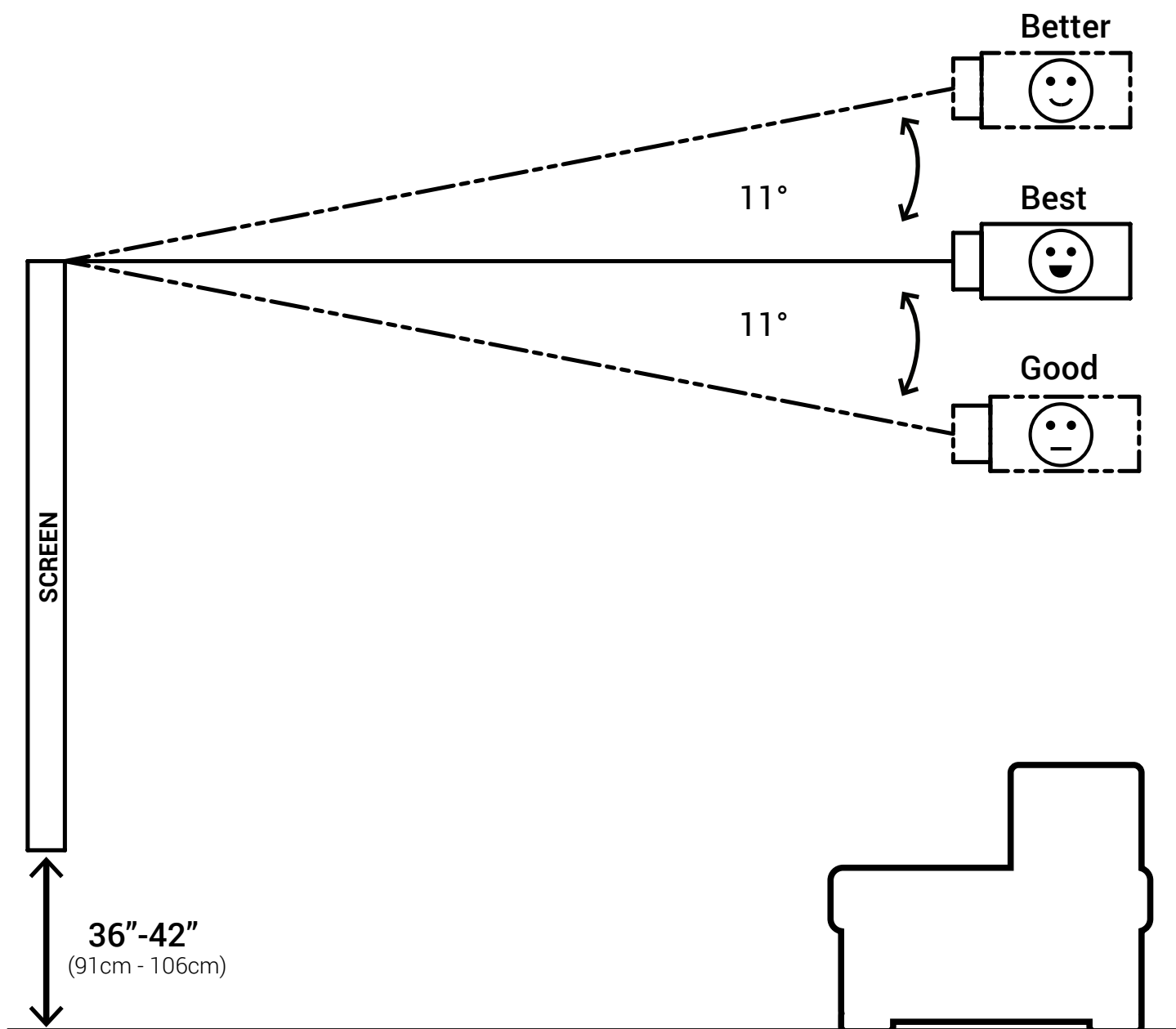


**512-832-6939**

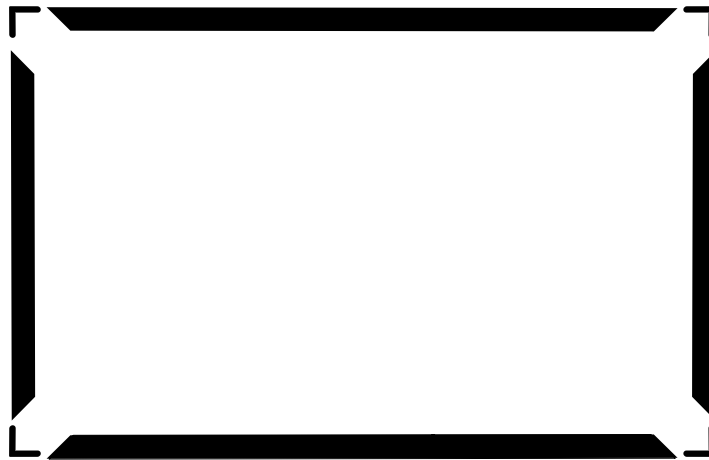
9715-B Burnet Road Suite 400, Austin, TX 78758  
[SCREENINNOVATIONS.COM](http://SCREENINNOVATIONS.COM)

3 SERIES FIXED

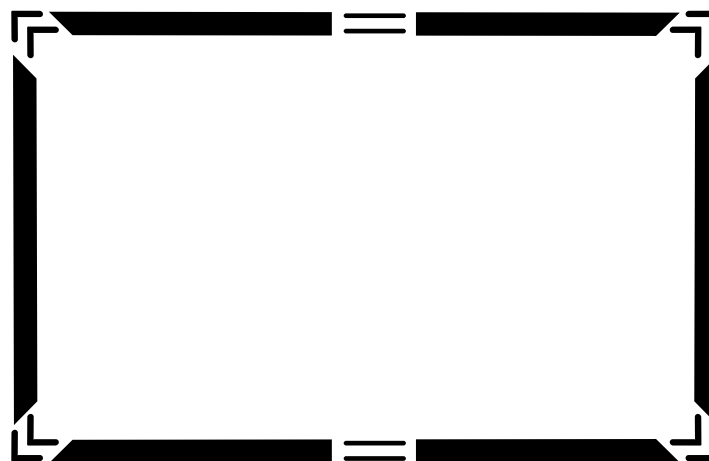
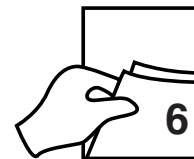
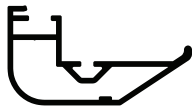
## Projector Placement



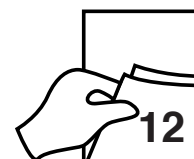




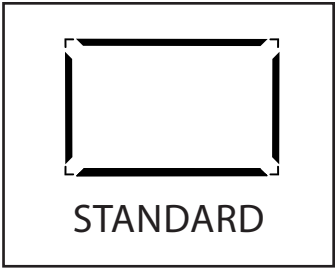
STANDARD



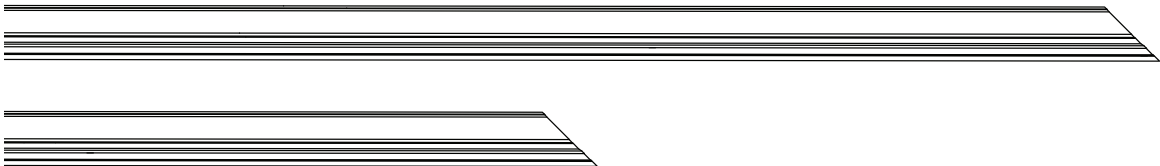
SPLIT FRAME



# Frame Installation



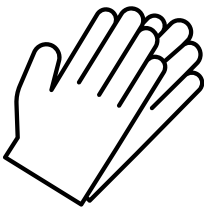
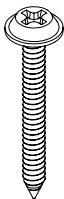
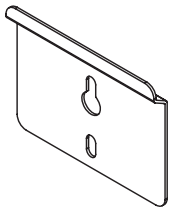
2X



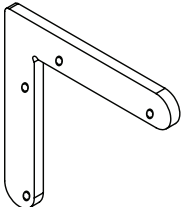
1X



Hardware Kit



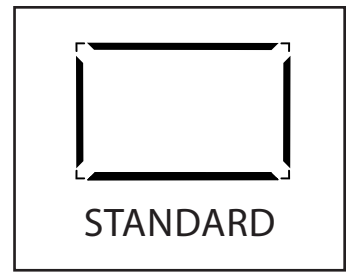
1X



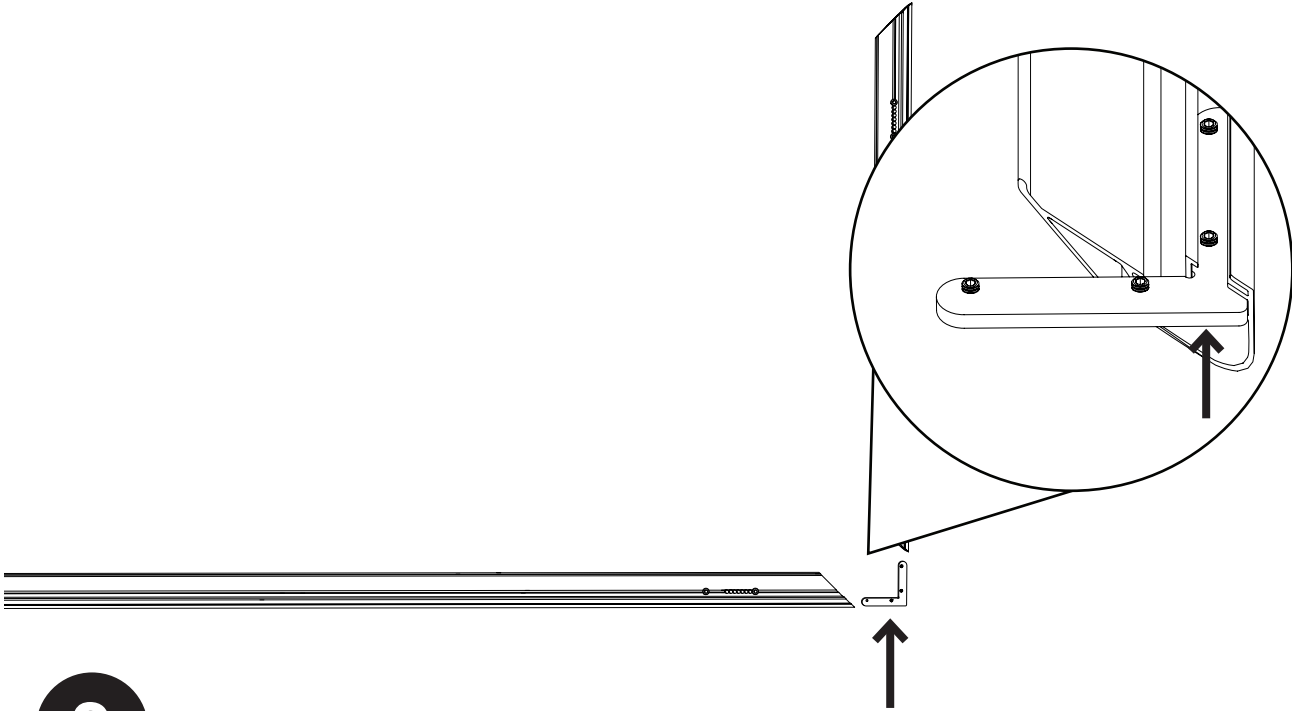
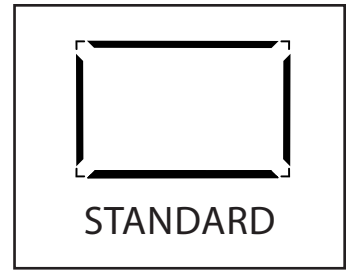
4X



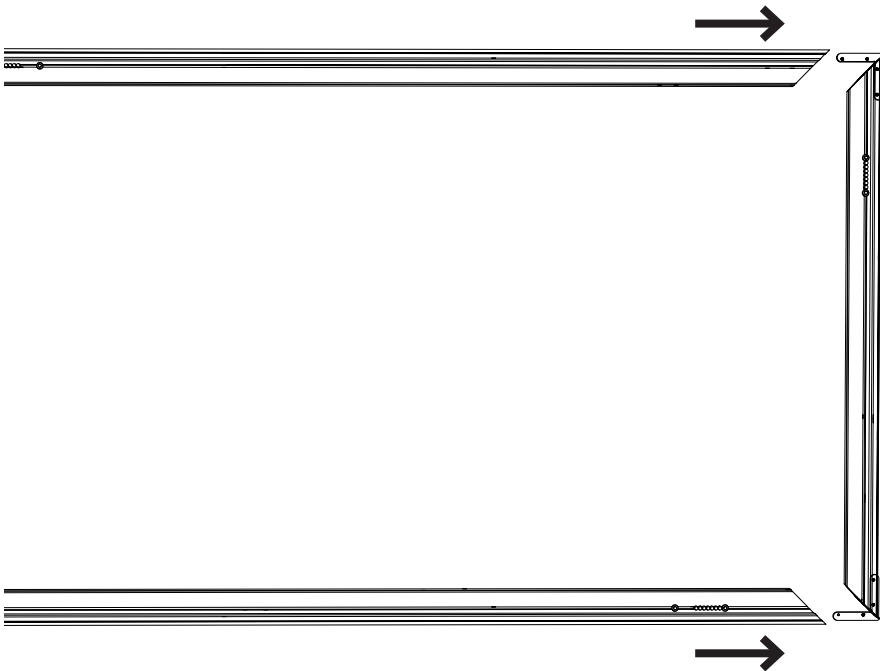
2X



1



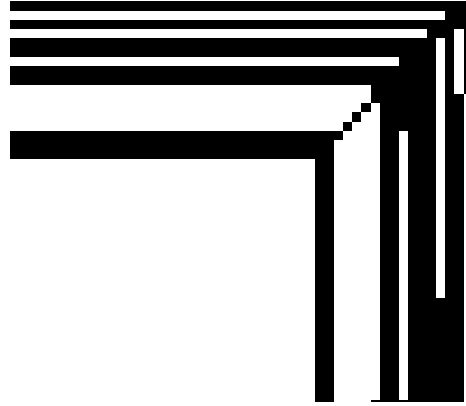
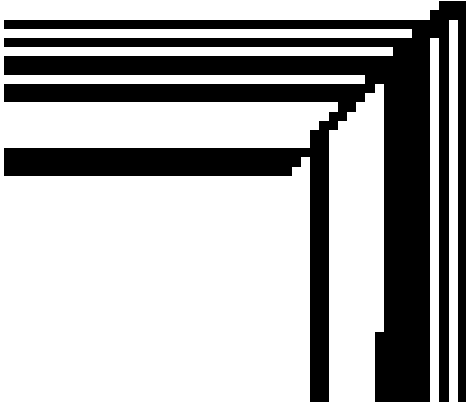
2



3

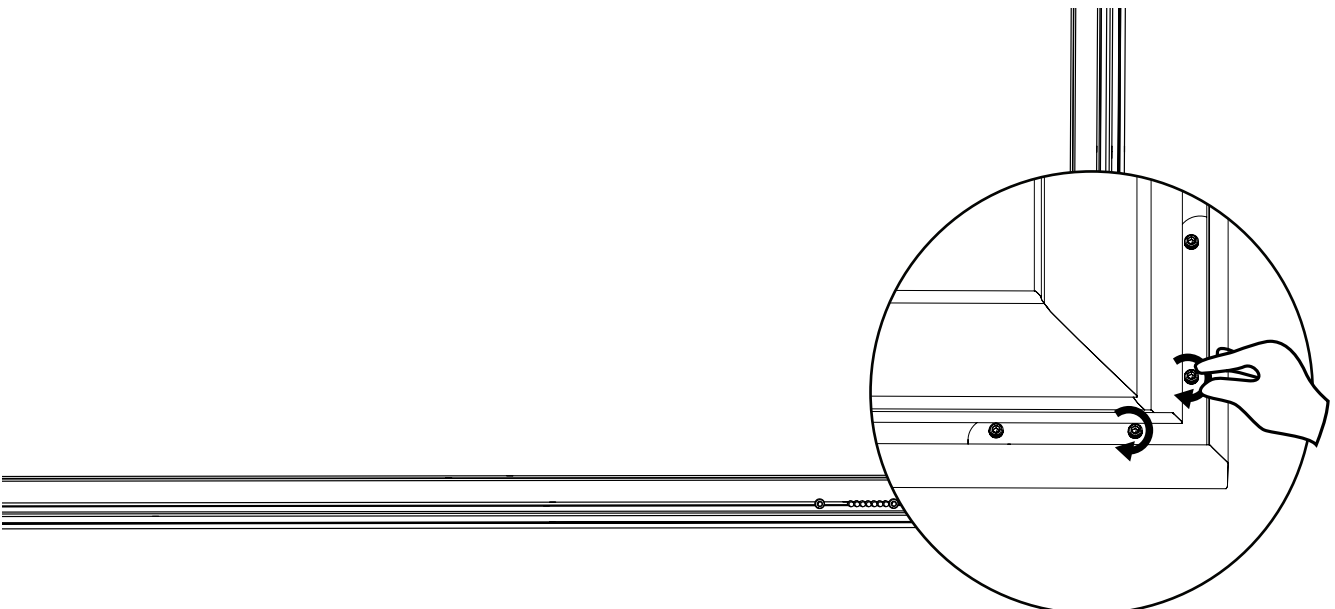


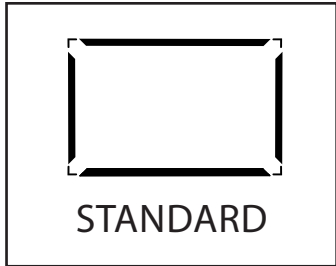
STANDARD



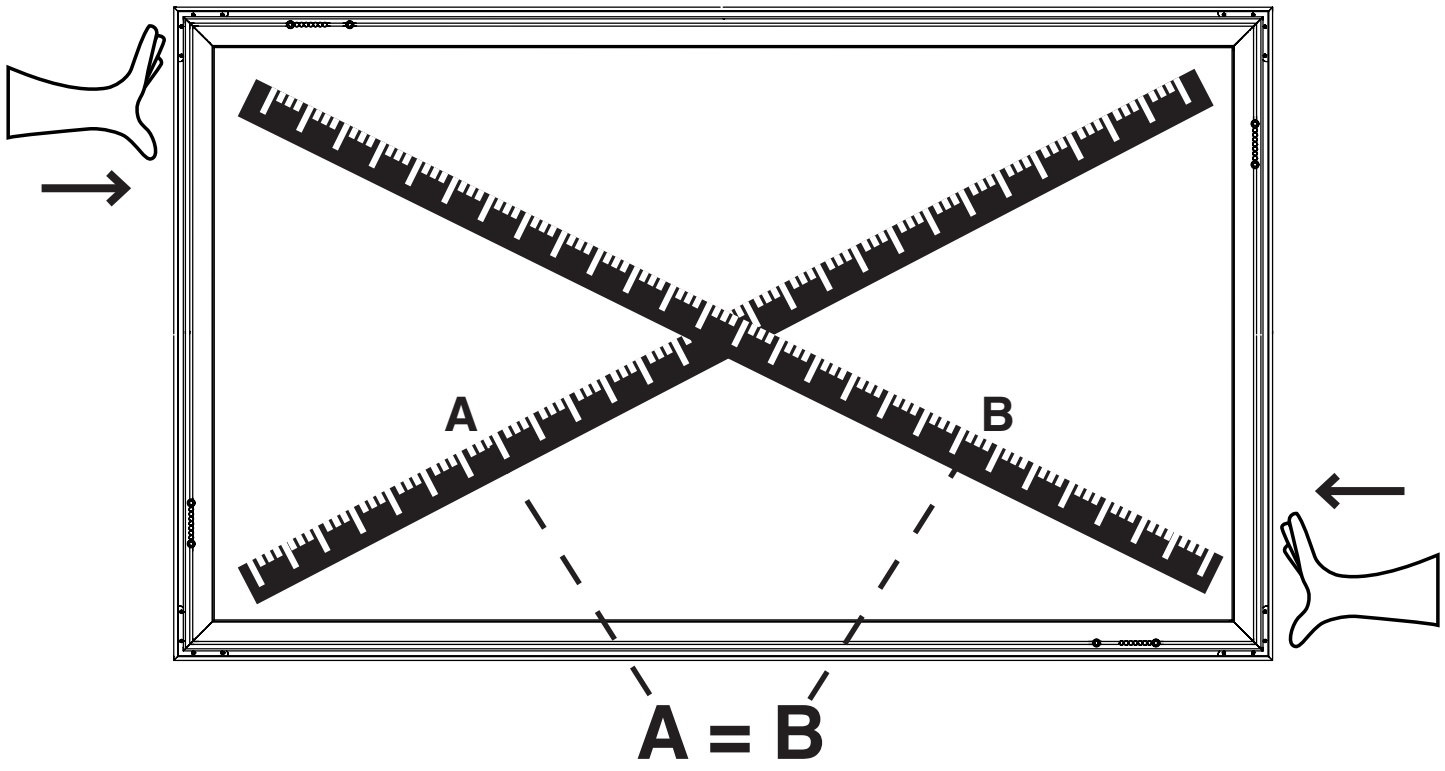
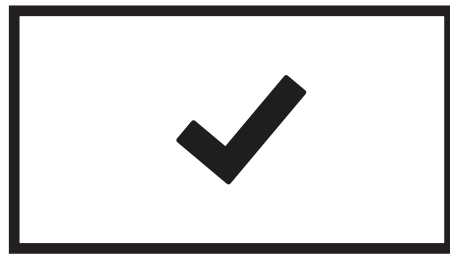
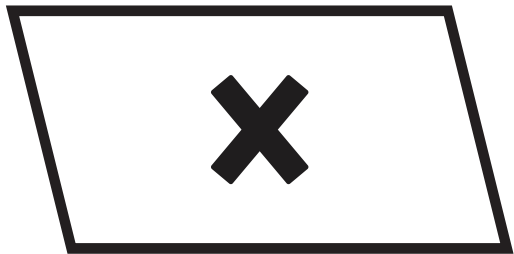
Align the corners of the frame, but DO NOT tighten the set screws yet.

4

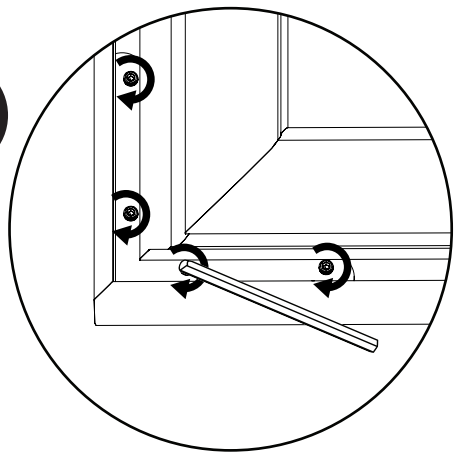




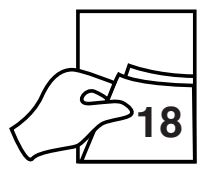
5



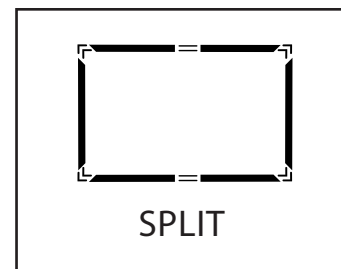
6



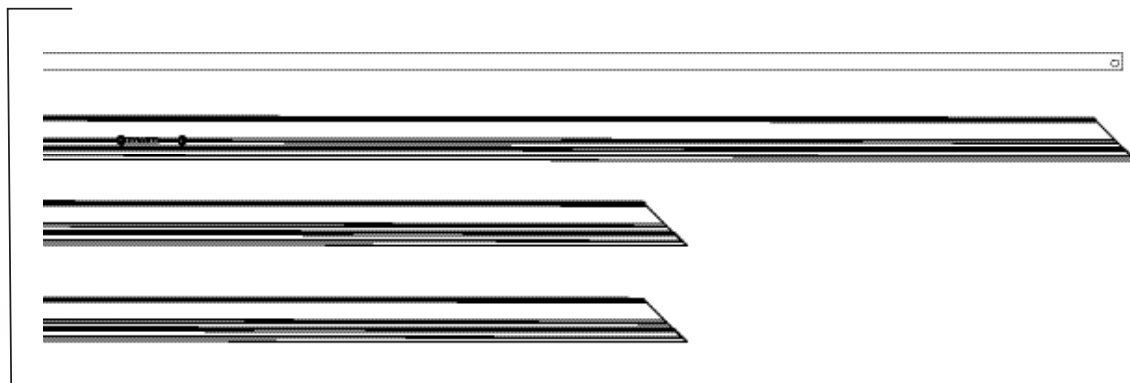
Using a tape measure or carpenter's square, ensure the frame is perfectly square, then tighten the set screws using the provided allen wrench. DO NOT USE A DRILL OR IMPACT! You will damage the frame.



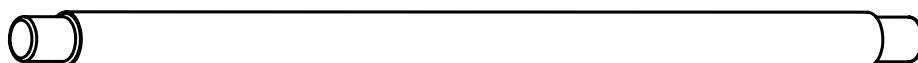
# Frame Installation



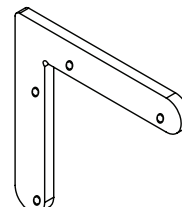
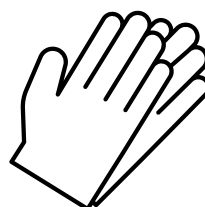
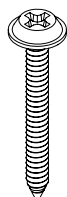
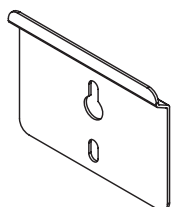
**2X**



**1X**

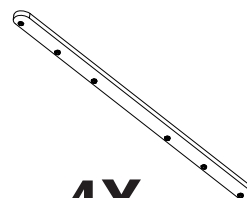
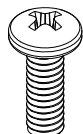
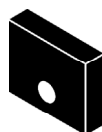


Hardware Kit



**1X**

**4X**



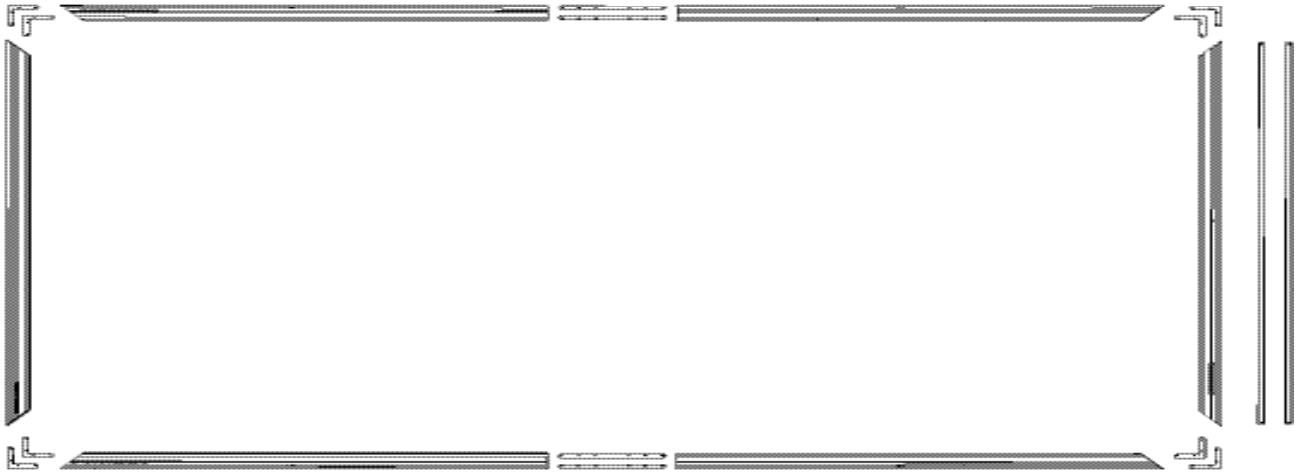
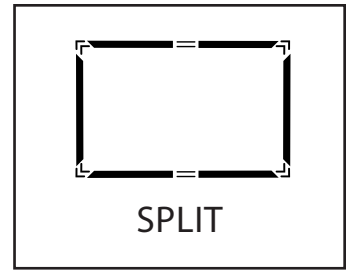
**2X**

**4X**

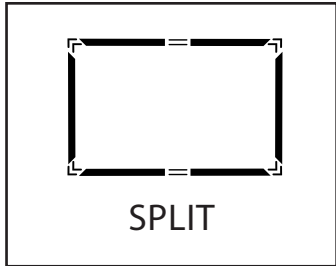
**4X**

**4X**

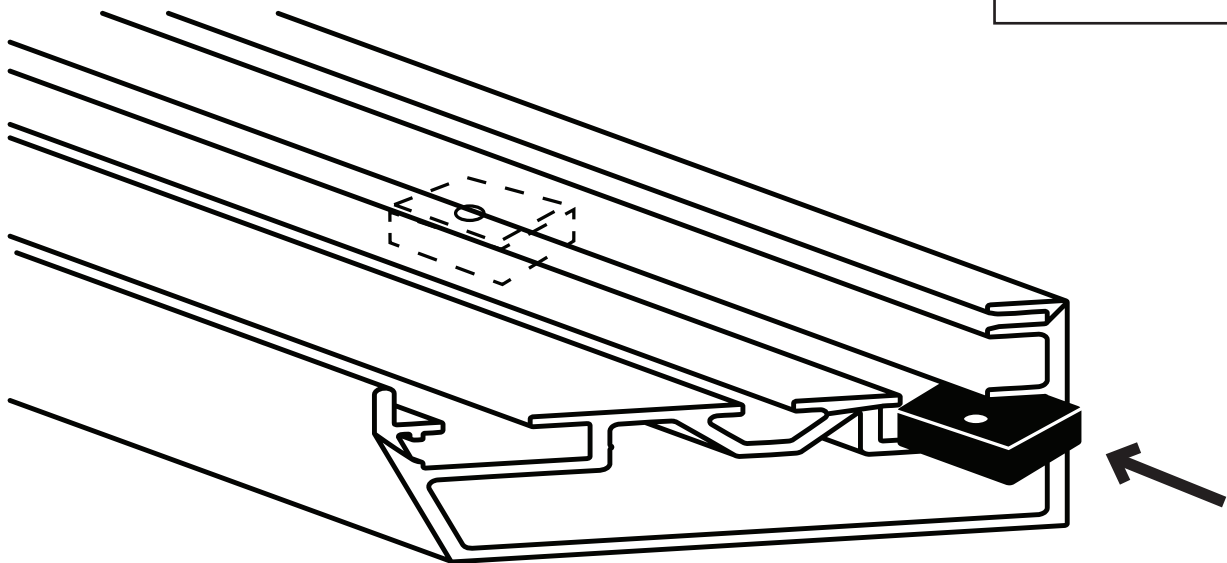
Larger screens are shipped with slot nuts, bolts, and vertical support bars. These must be installed on large, split frame screens, or wall brackets must be installed top and bottom. See Split Frame mounting instructions starting on page 22.





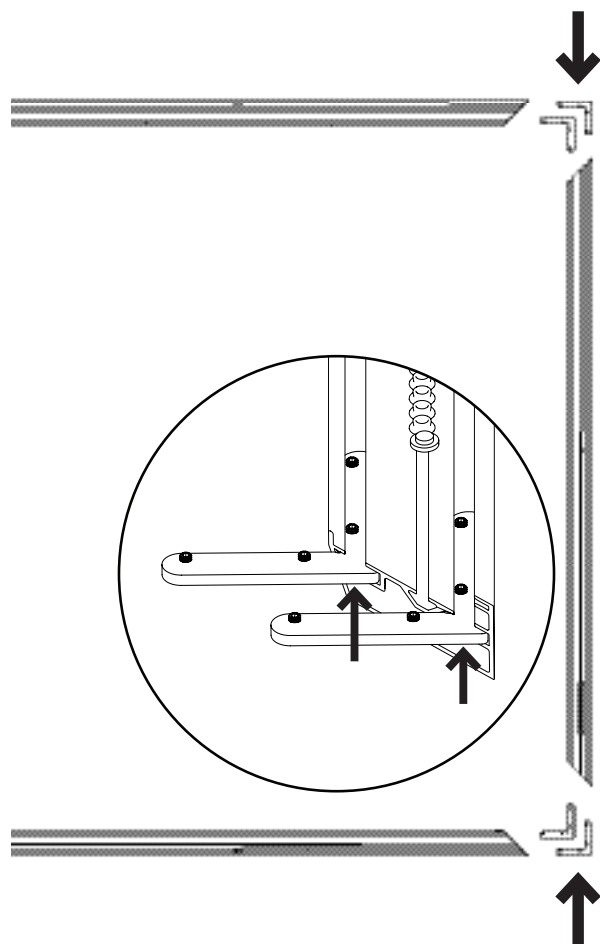


1

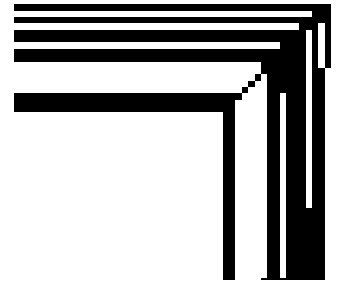
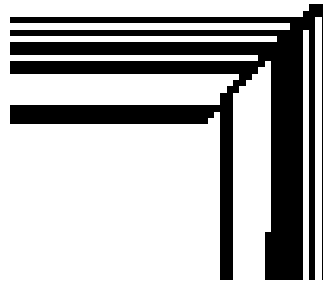
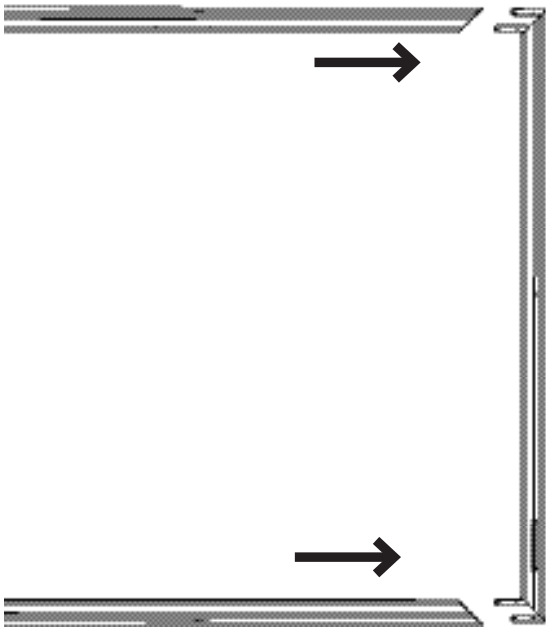
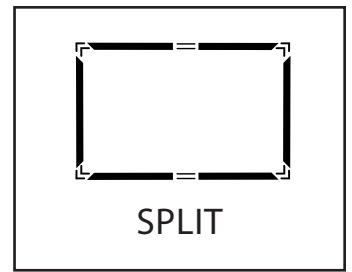


Install the t-slot nuts in the horizontal frame pieces before putting the corner brackets in.

2

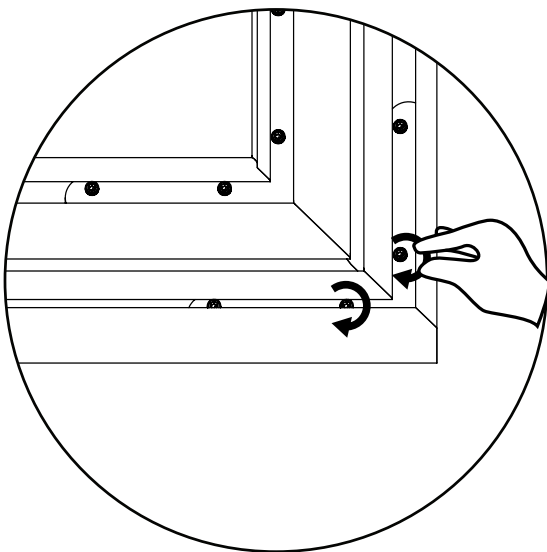


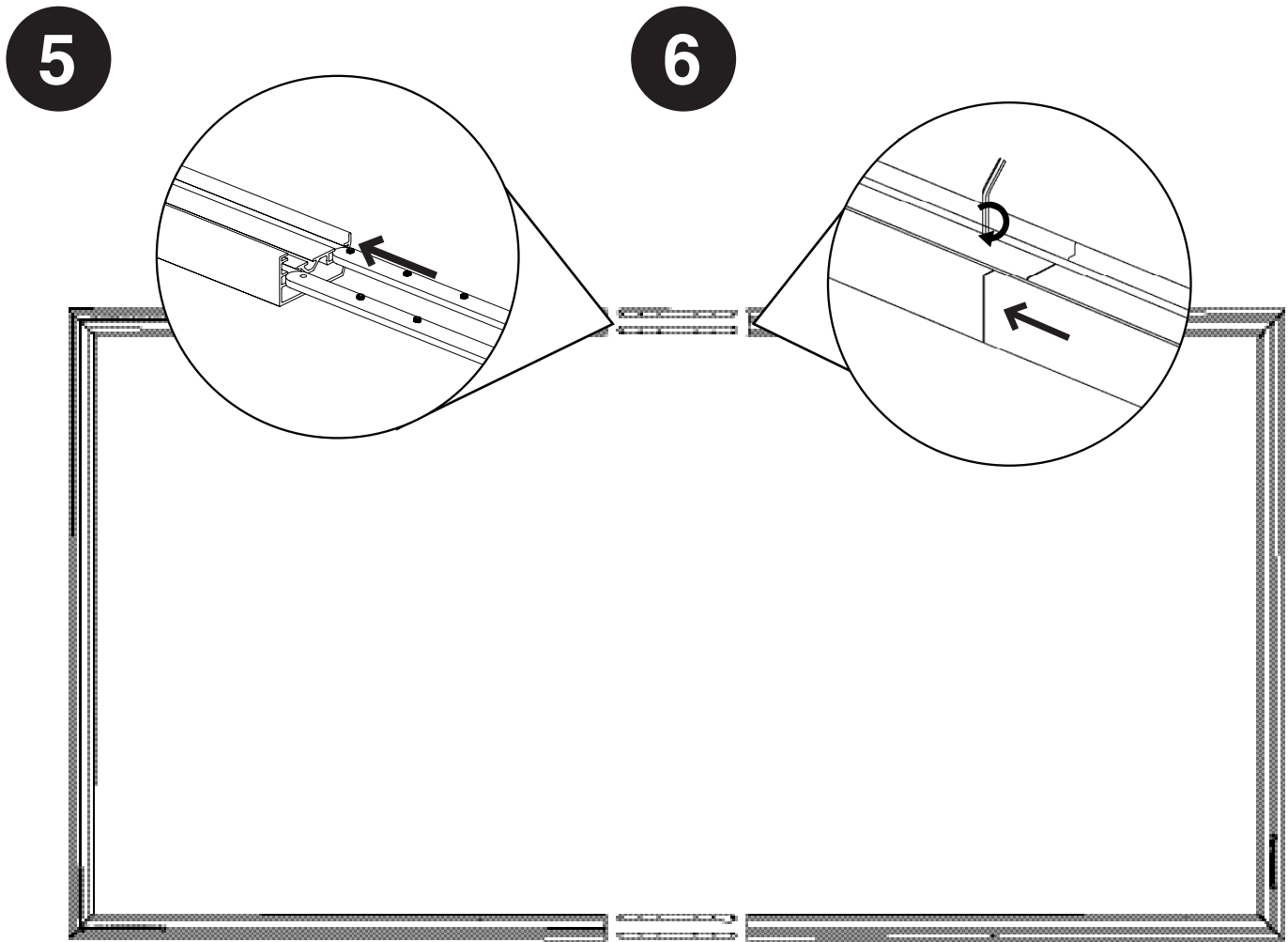
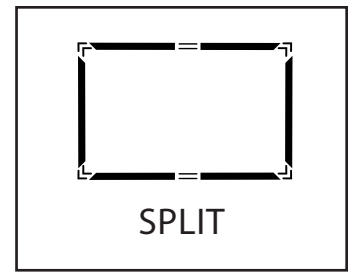
3



4

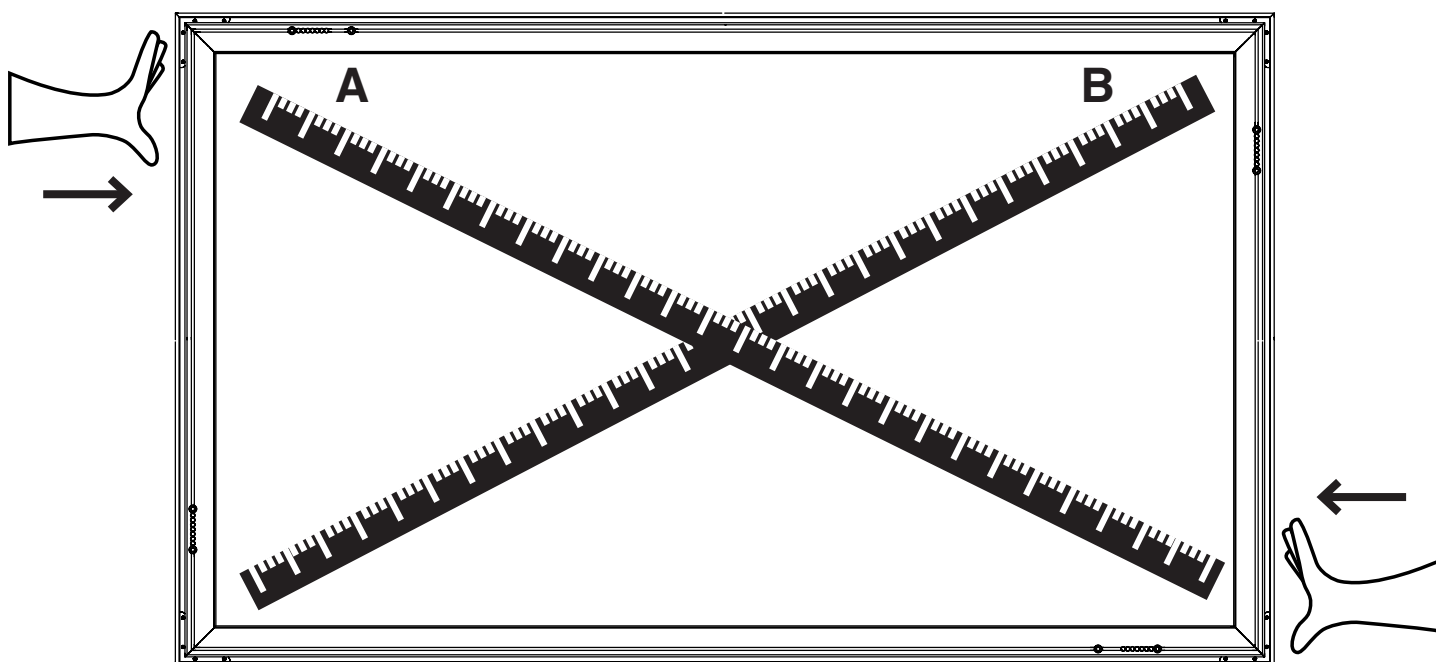
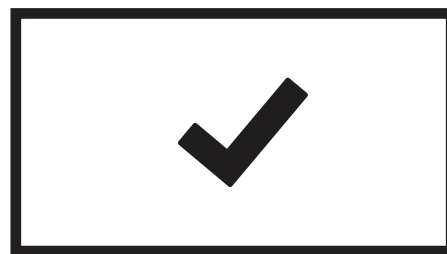
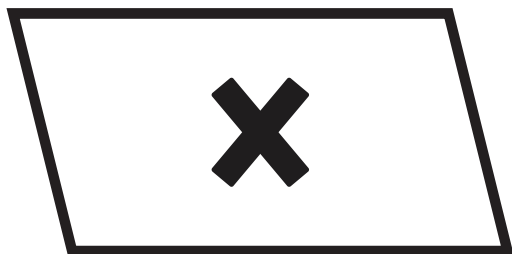
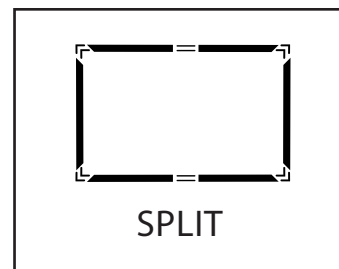
Align the corners of the frame, but DO NOT tighten the set screws yet.





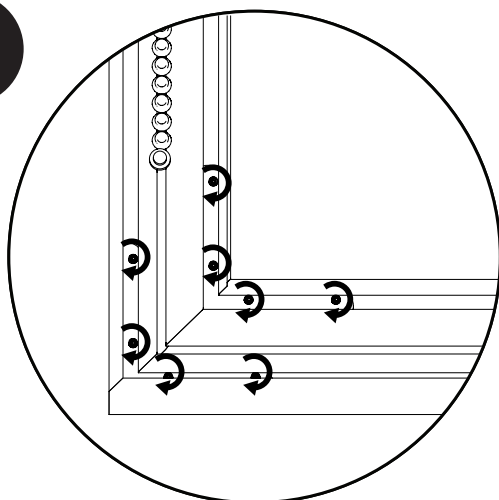
Using the supplied allen wrench, tighten the set screws on the split bars. Do not use a drill or impact as it will damage the frame.

7



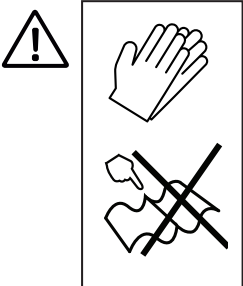
**A = B**

8

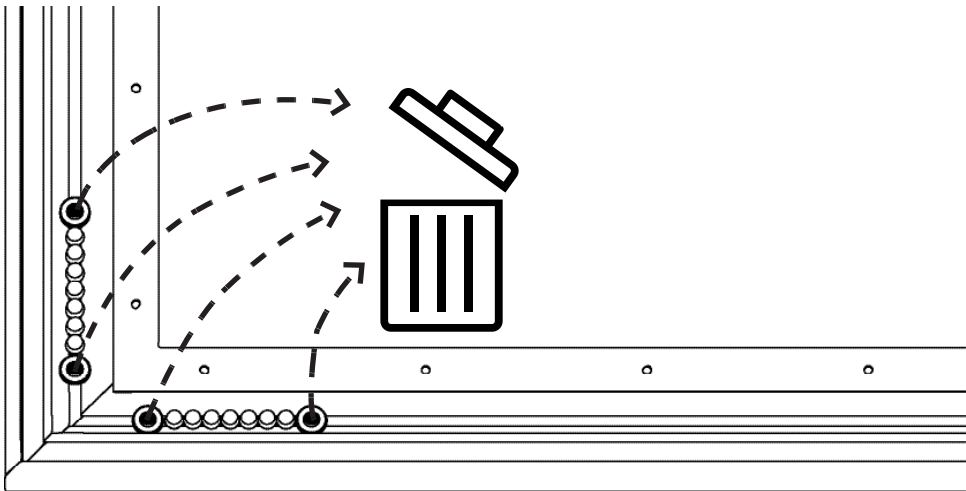


Using a tape measure or carpenter's square, ensure the frame is perfectly square, then tighten the set screws using the provided allen wrench. **DO NOT USE A DRILL OR IMPACT!** You will damage the frame.

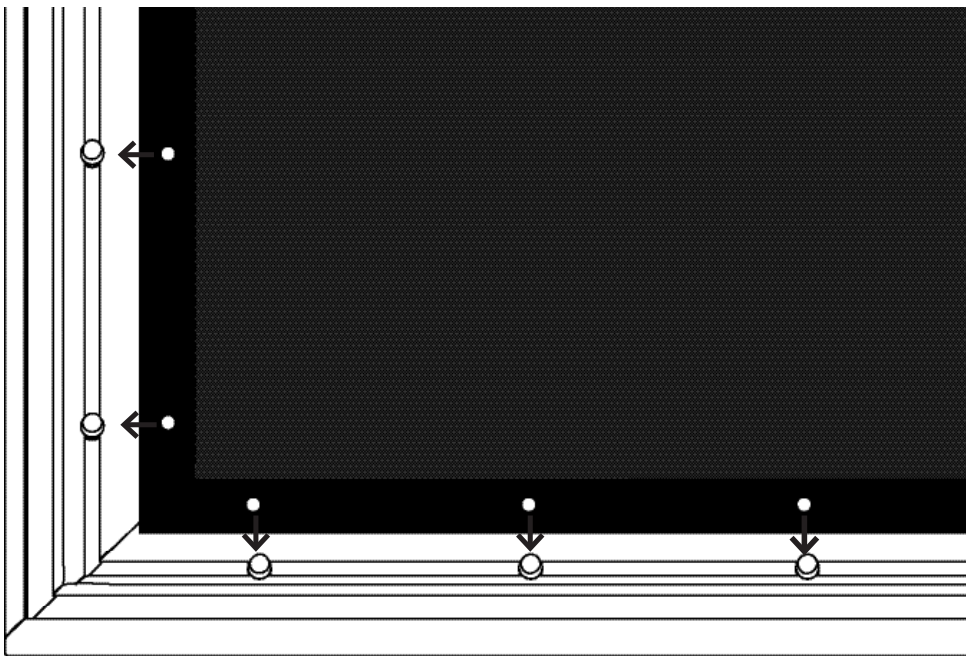
1



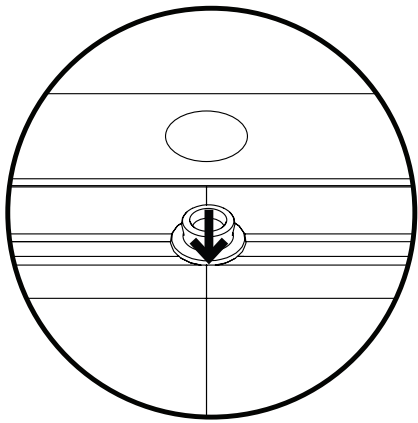
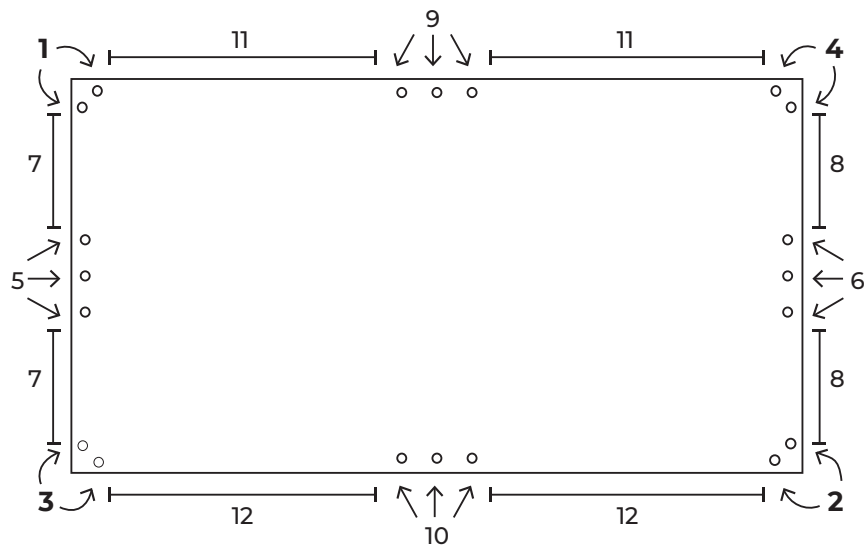
2



3

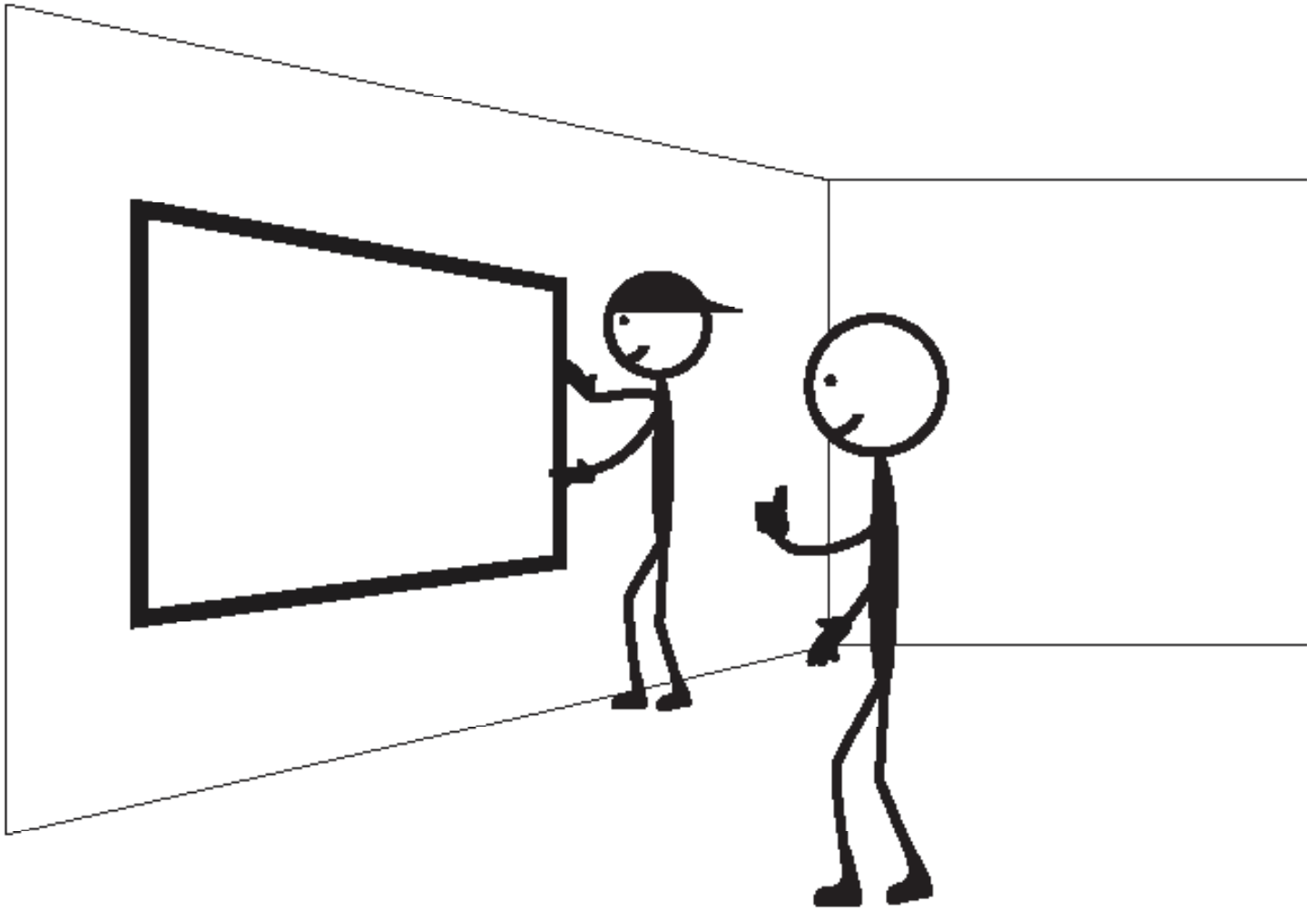


4



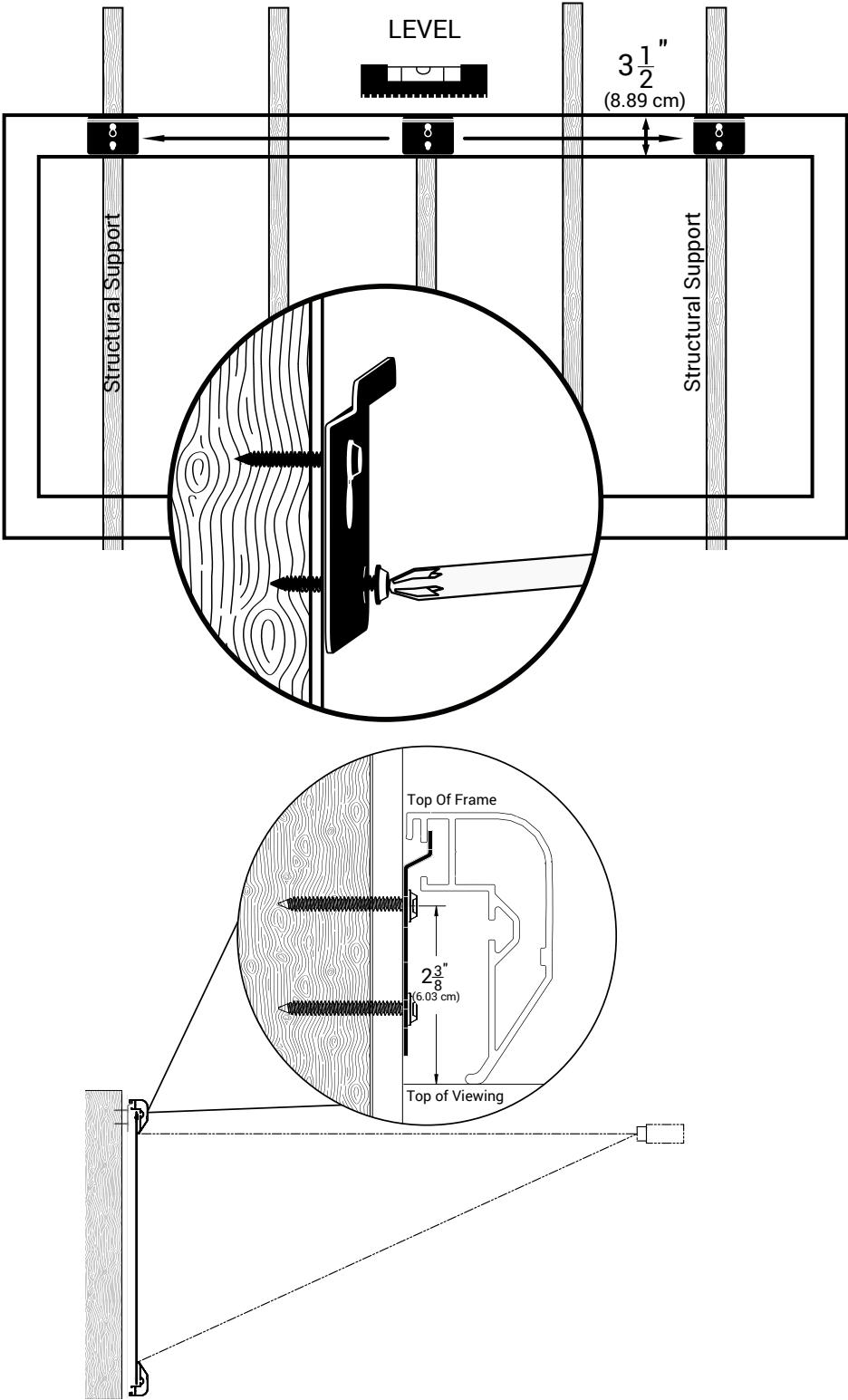
Starting from the upper-left corner, attach the snap/bungee attachments, working around the ends on all four sides of the screen material.

## Screen Mounting



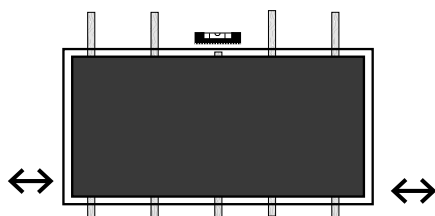
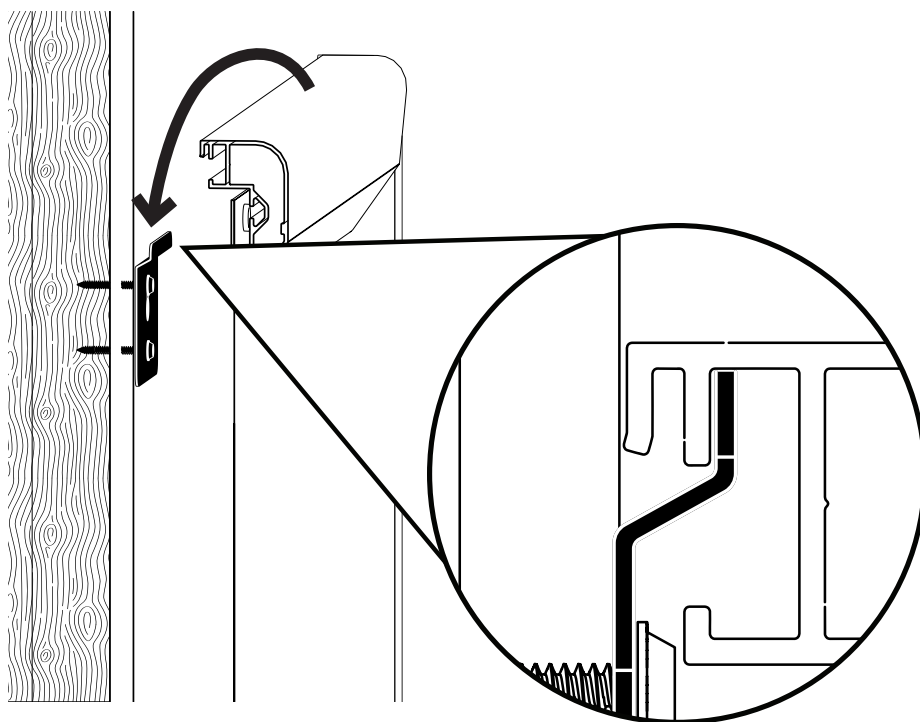
3 SERIES FIXED  
Screen Mounting Standard

1

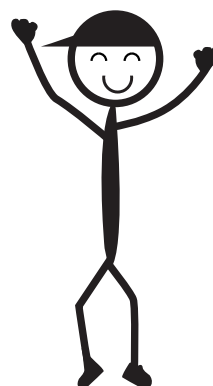


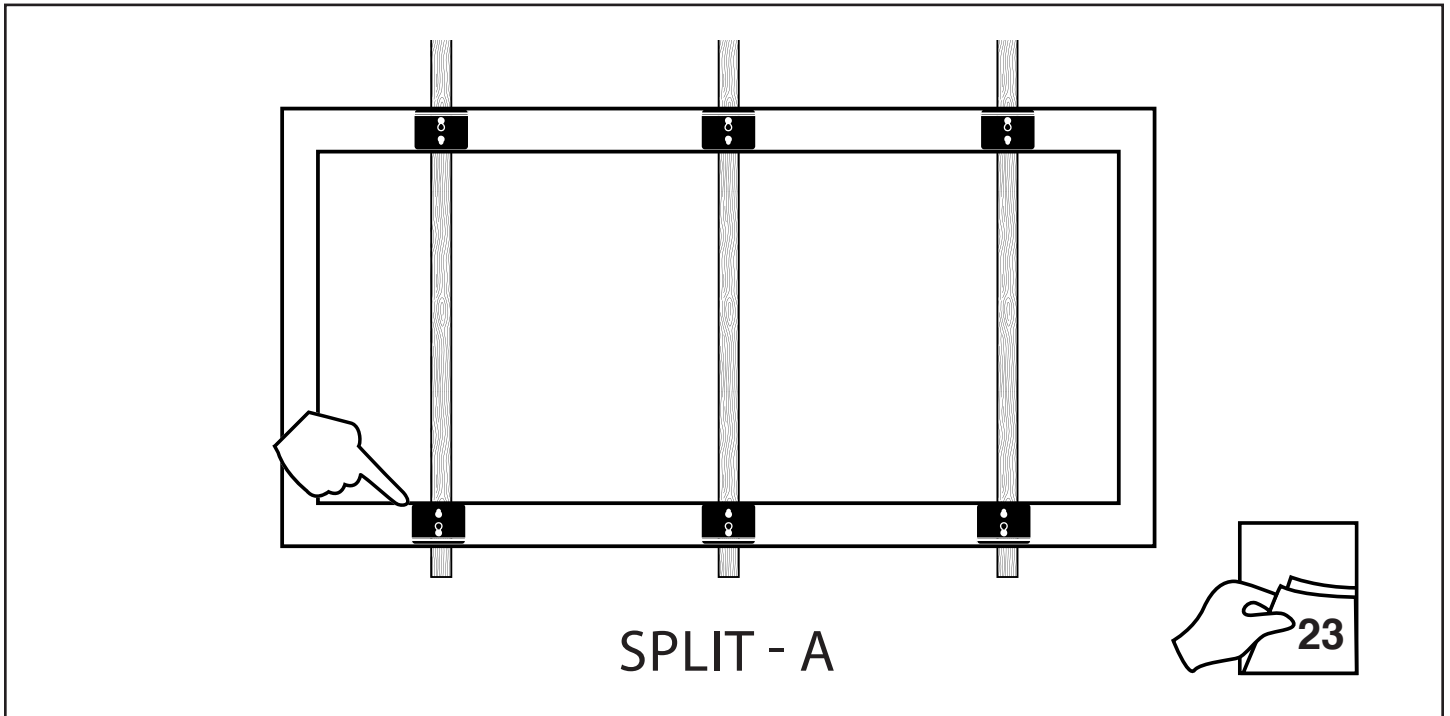
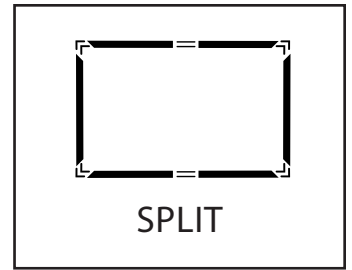


2

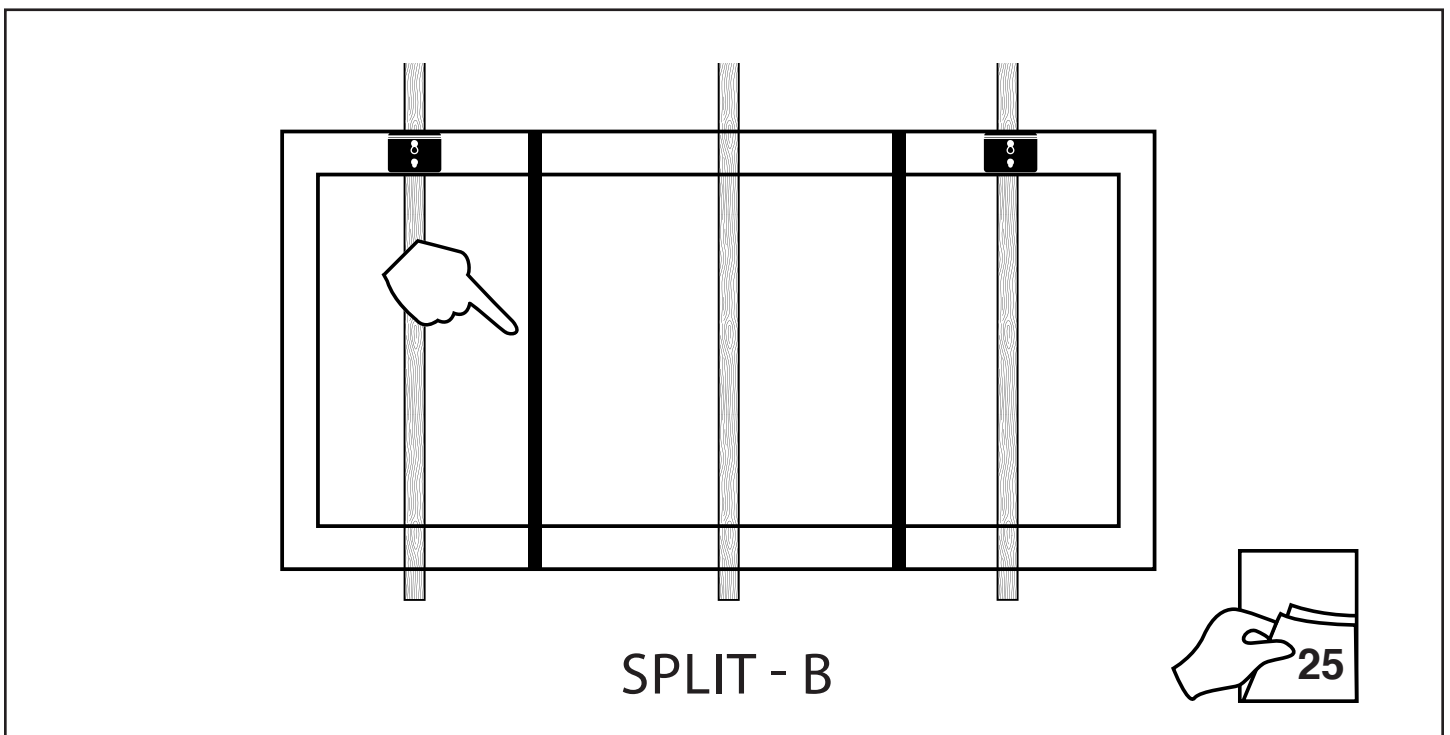


3



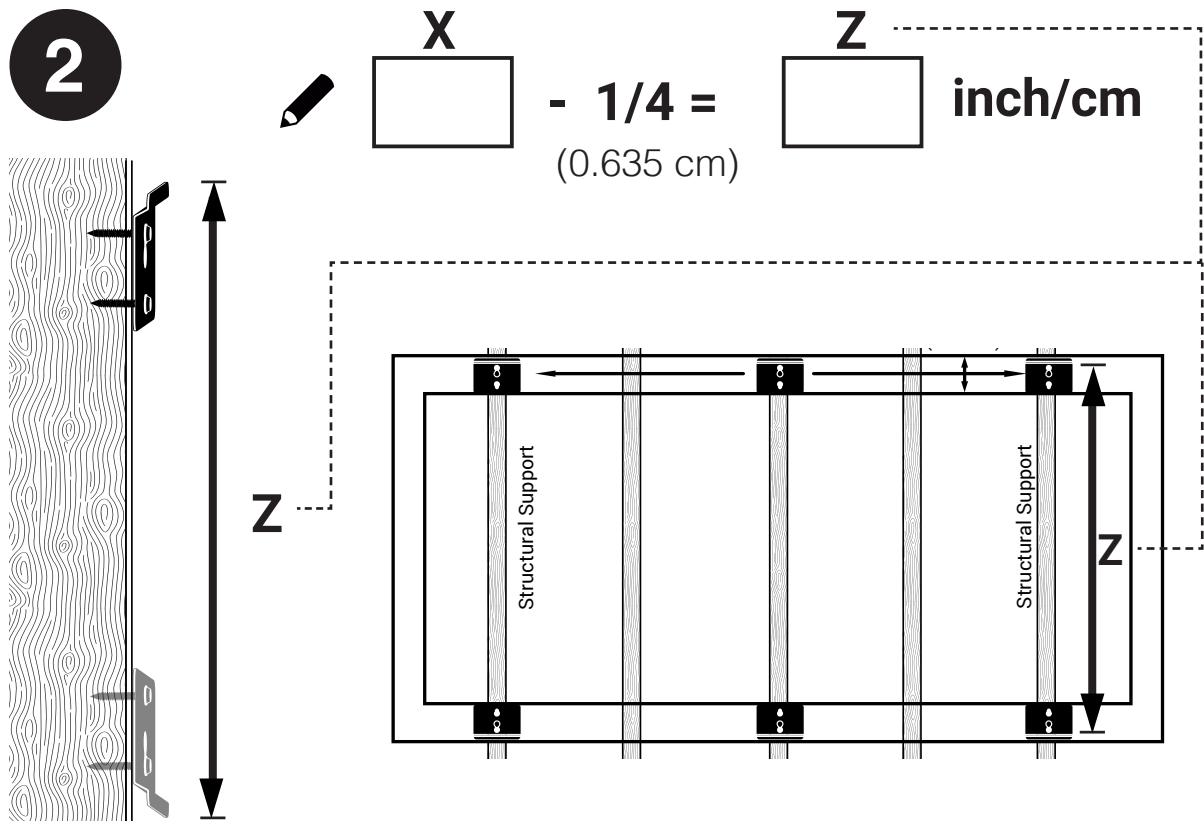
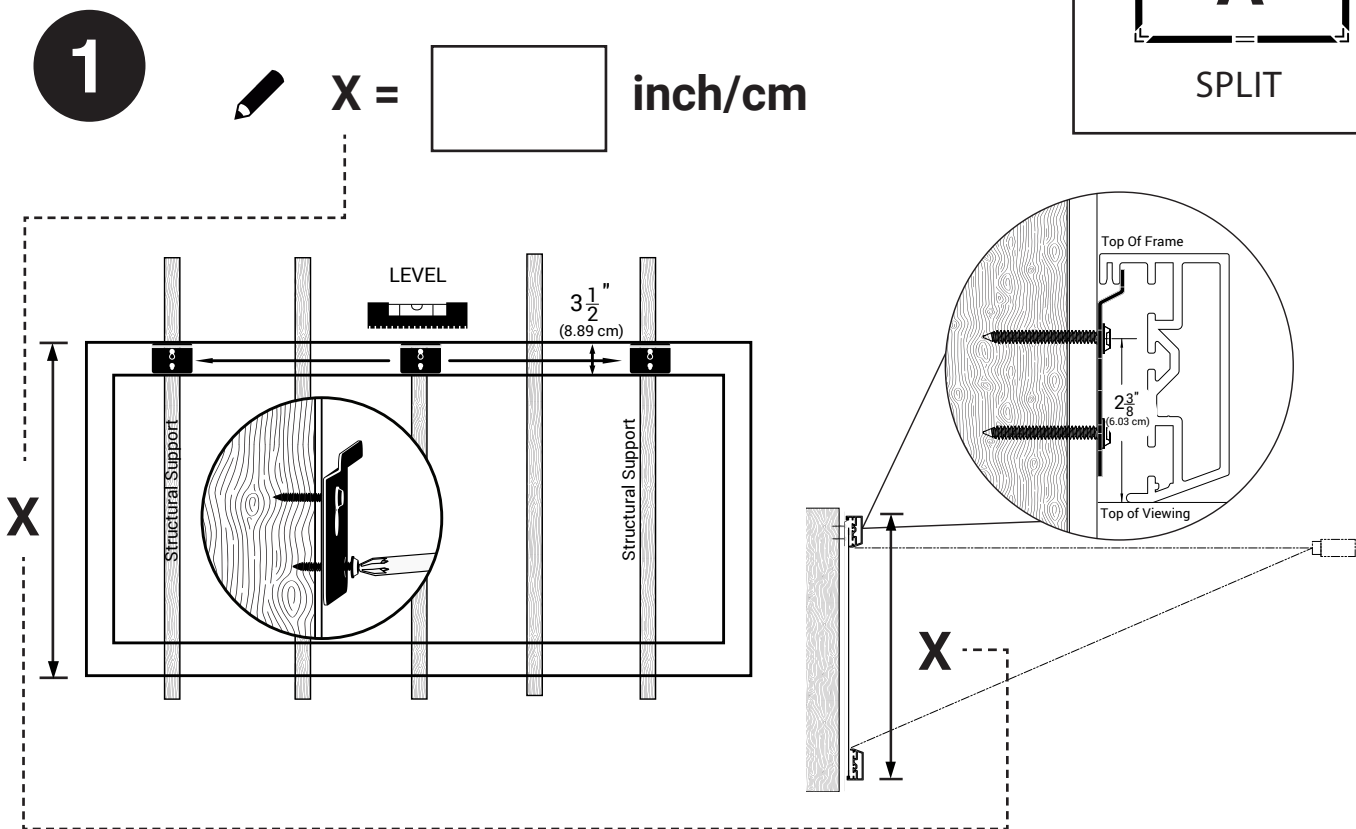
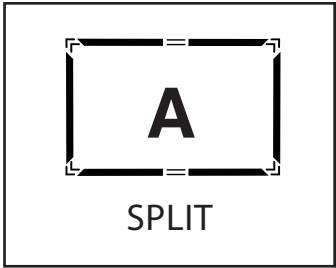


Split A mounting used when vertical support bars not being installed

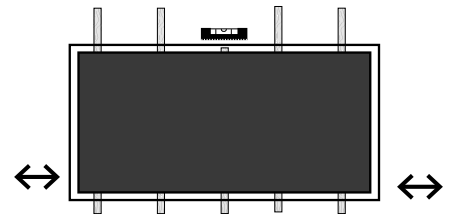
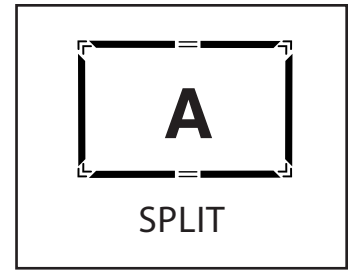
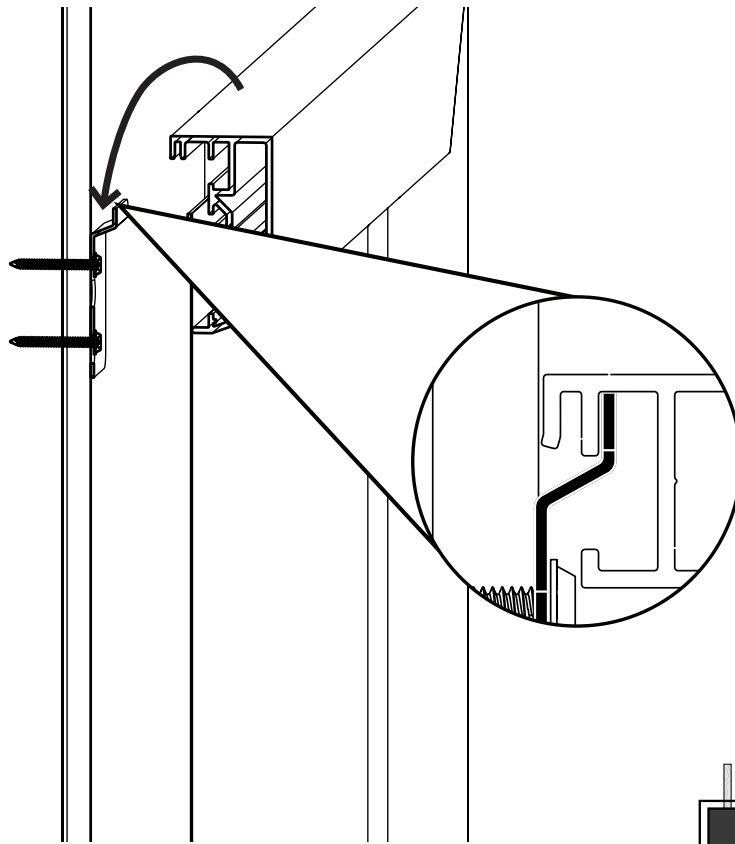


Split B mounting used when vertical support bars are installed

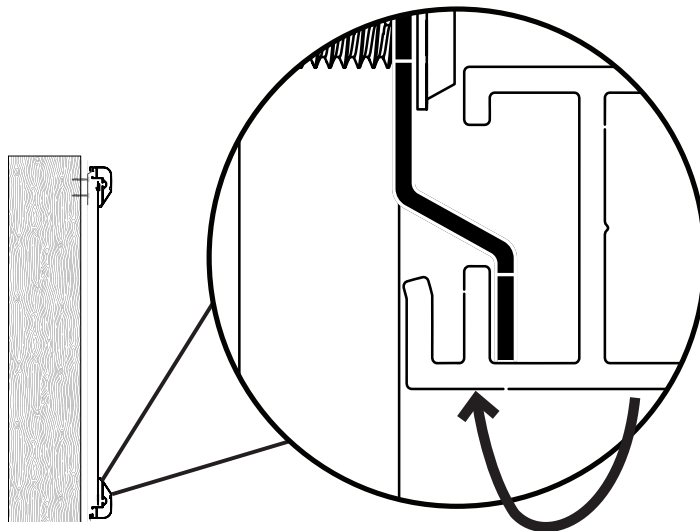
# Screen Mounting Split Method A



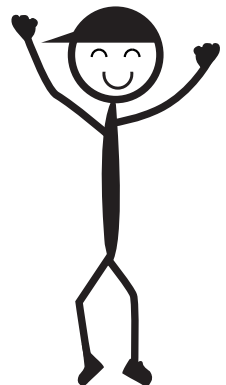
3



4

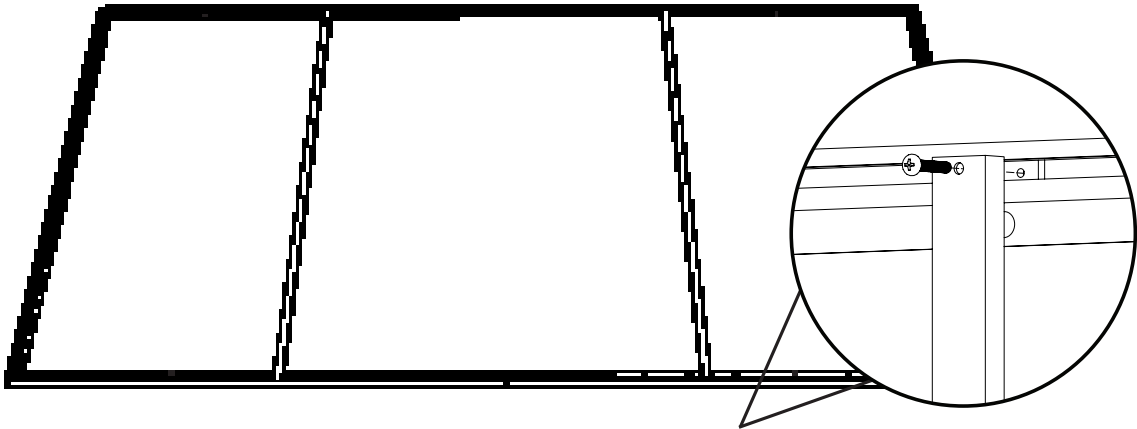
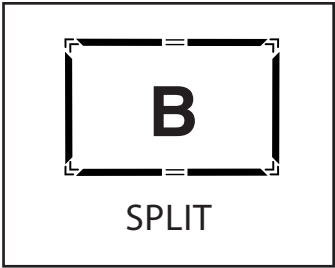


5

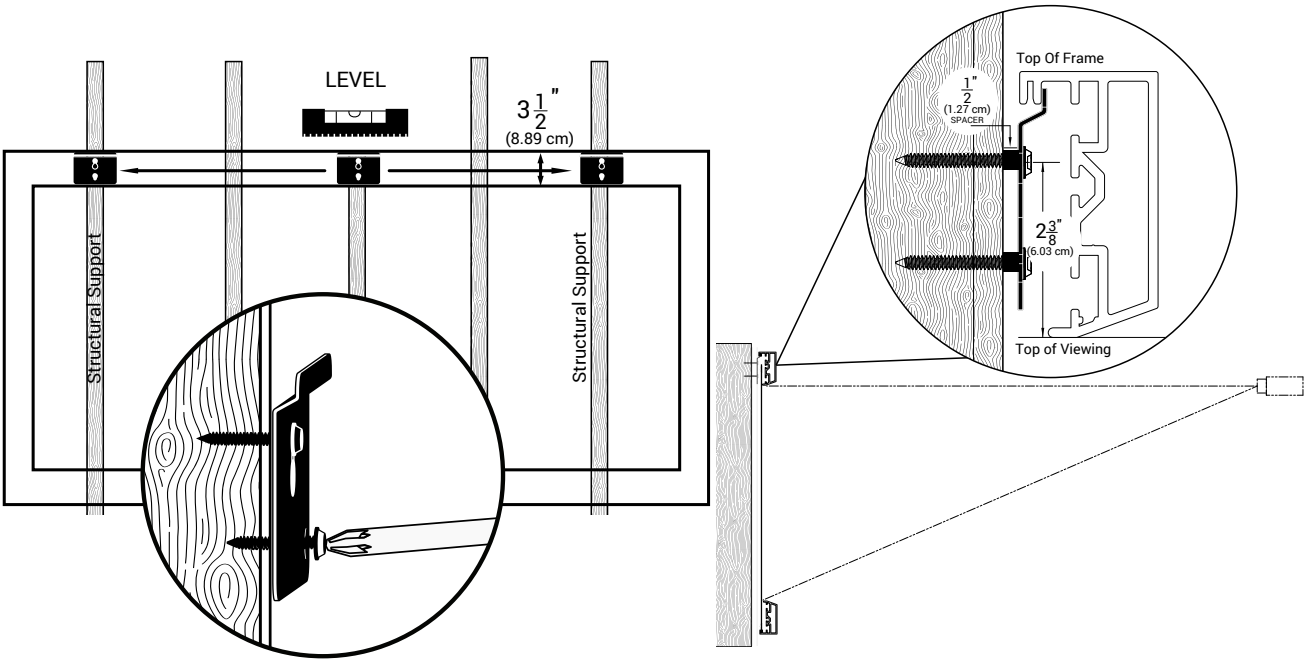


# Screen Mounting Split Method B

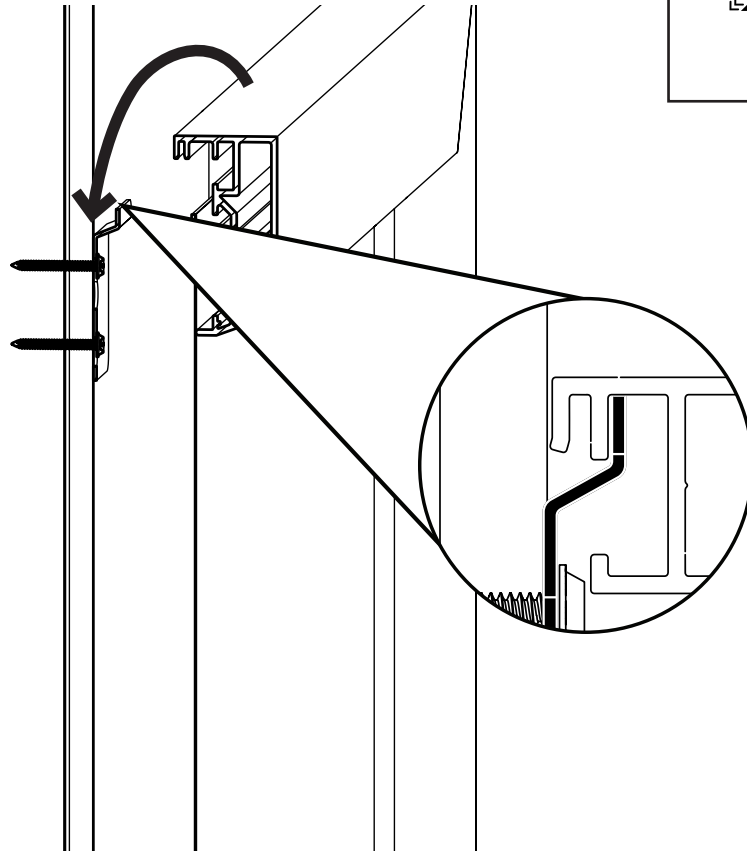
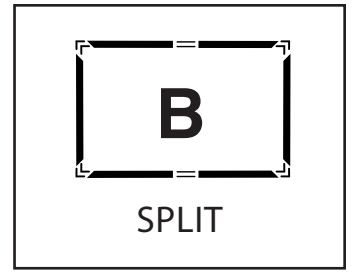
1



2

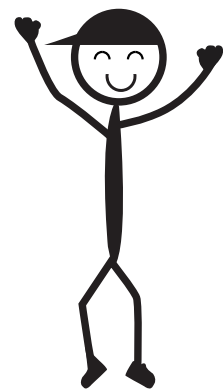
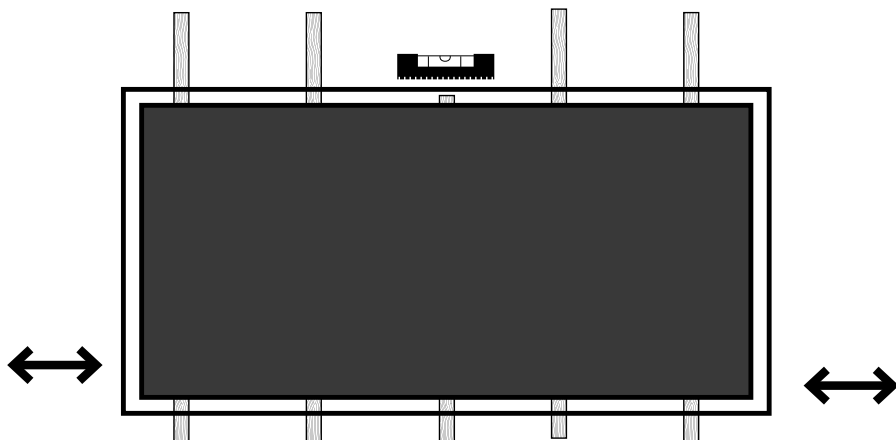


3



4

5





NOTES:

**9715-B Burnet Road Suite 400, Austin, TX 78758**

Tel: 512-832-6939 Fax: 512-832-6136

[www.screeninnovations.com](http://www.screeninnovations.com)